

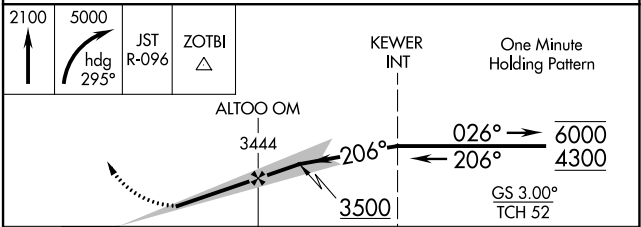
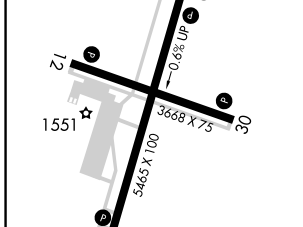
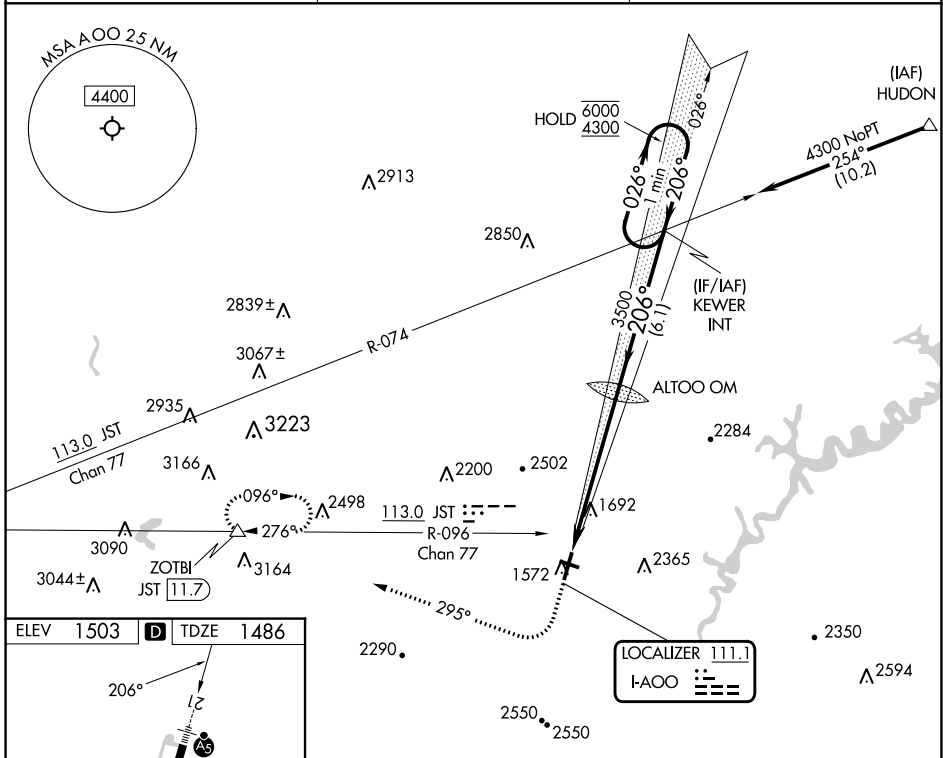
LOC I-AOO <b>111.1</b>	APP CRS <b>206°</b>	Rwy ldg TDZE Apt Elev	<b>5465</b> <b>1486</b> <b>1503</b>
---------------------------	------------------------	-----------------------------	---

# ILS or LOC RWY 21

ALTOONA/BLAIR COUNTY (A00)

DME required.	MALSR 	MISSED APPROACH: Climb to 2100 then climbing right turn to 5000 on heading 295° and on JST R-096 to ZOTBI/JST 11.7 DME and hold, continue climb-in-hold to 5000.
Circling NA to Rwy 12 and 30. Circling NA for Cats C, D northwest of Rwy 12 and 21. For inop ALS increase S-LOC 21 visibility Cats C and D to 2 SM.		

ASOS <b>127.125</b>	JOHNSTOWN APP CON * <b>121.2 299.2</b>	CTAF <b>123.60</b>
------------------------	---	-----------------------



CATEGORY	A	B	C	D
S-ILS 21		1686-1/2	200 (200-1/2)	
S-LOC 21	2240-1/2 754 (800-1/2)	2240-3/4 754 (800-3/4)	2240-1 3/4	754 (800-1 3/4)
<input checked="" type="checkbox"/> CIRCLING	2240-1 737 (800-1)	2240-1 1/4 737 (800-1 1/4)	2800-3 1297 (1300-3)	2840-3 1337 (1400-3)

NE-4, 26 DEC 2024 to 23 JAN 2025

NE-4, 26 DEC 2024 to 23 JAN 2025