

# CCOBB THREE DEPARTURE (RNAV)

EC-1, 26 DEC 2024 to 23 JAN 2025

RNAV 1 - DME/DME/IRU or GPS.	<b>TOP ALTITUDE: 17000</b>
RADAR required.	

DETROIT DEP CON  
125.525 284.0 (Rwy 3L/R, 4L/R, 21L/R, 22L/R)  
132.025 284.0 (Rwy 27L/R)  
D-ATIS 118.125  
CLNC DEL 120.65  
CPDIC  
GND CON  
121.8 (NW) 119.45 (NE)  
132.725 (SW) 119.25 (SE)  
METRO TOWER  
118.4 317.725 (Rwys 3L/R, 21L/R, 27R)  
128.75 317.725 (Rwy 27L)  
135.0 317.725 (Rwy 4L/R, 22L/R)

ZEGBI  
9000  
\*2500  
278° (31)

CCOBB  
279° (10)

BROZZ  
279° (10)

NAPOLEON

FDRCH  
279° (10)

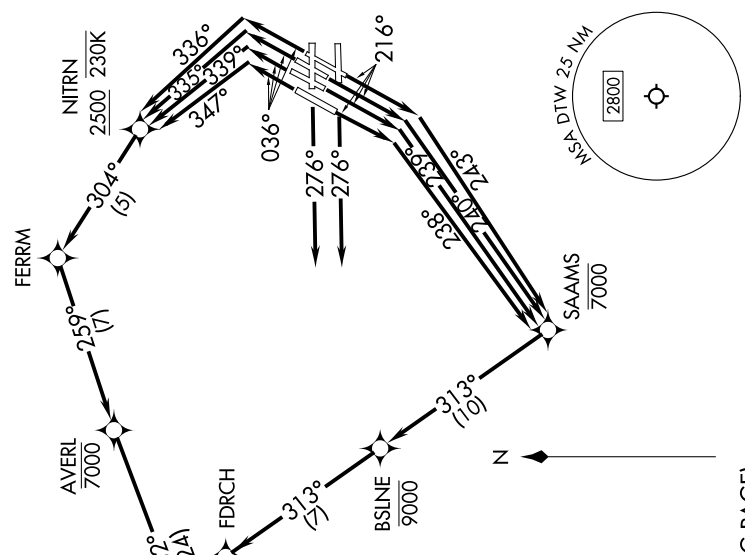
AVERL  
7000

FERRM  
259° (7)

NIITRN  
2500 230K  
30.4° (5)

TAKEOFF MINIMUMS:  
Rwys 27L/R: Standard.  
Rwys 3L/R, 4L/R, 21L/21R, 22L/R: Standard with minimum climb of 500'/NM to 1146.

NOTE: Turbojet departures at/above 10000, maintain 280K until advised by ATC.  
NOTE: For use by aircraft filed at or below FL220, or as assigned by ATC.  
NOTE: CAUTION; Parachute jumping 6 NM SW of BROZZ, 3 NM radius of Napoleon Airport (3NP) at or below 17999 (SR-SS).



(CONTINUED ON FOLLOWING PAGE)

NOTE: Chart not to scale.

EC-1, 26 DEC 2024 to 23 JAN 2025