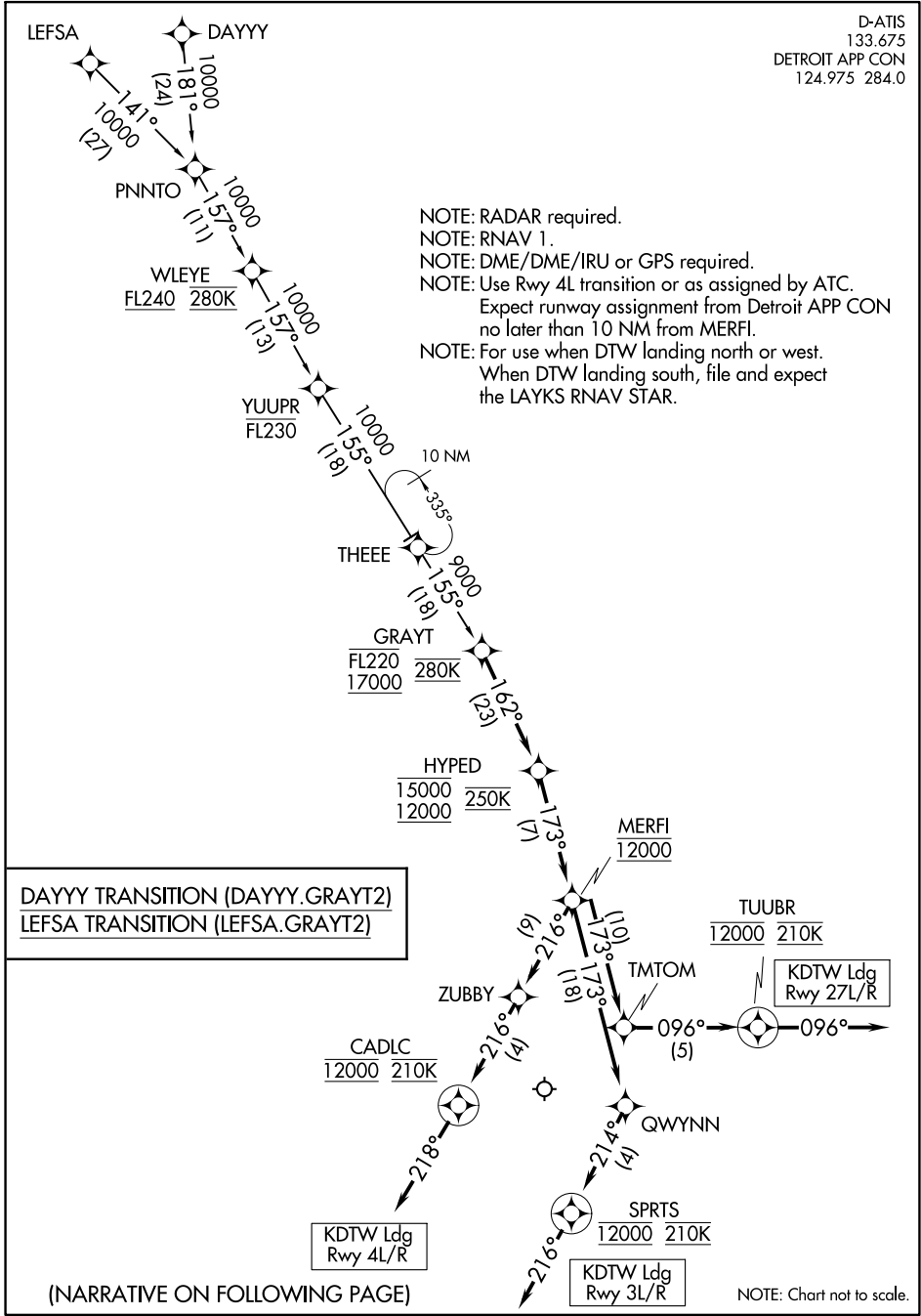


GRAYT TWO ARRIVAL (RNAV)

D-ATIS
133.675
DETROIT APP CON
124.975 284.0



NOTE: RADAR required.
 NOTE: RNAV 1.
 NOTE: DME/DME/IRU or GPS required.
 NOTE: Use Rwy 4L transition or as assigned by ATC.
 Expect runway assignment from Detroit APP CON no later than 10 NM from MERFI.
 NOTE: For use when DTW landing north or west.
 When DTW landing south, file and expect the LAYKS RNAV STAR.

DAYYY TRANSITION (DAYYY.GRAYT2)
 LEFSA TRANSITION (LEFSA.GRAYT2)

(NARRATIVE ON FOLLOWING PAGE)

NOTE: Chart not to scale.

EC-1, 26 DEC 2024 to 23 JAN 2025

EC-1, 26 DEC 2024 to 23 JAN 2025