

(HAYLL.HAYLL3) 21112

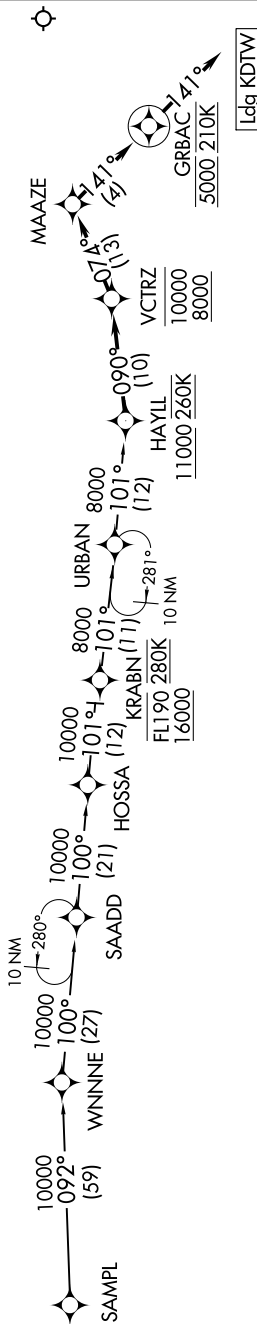
HAYLL THREE ARRIVAL (RNAV)

AL-119 (FAA)

DETROIT METRO WAYNE COUNTY (DTW)
DETROIT, MICHIGAN

EC-1, 26 DEC 2024 to 23 JAN 2025

D-ATIS
133.675
DETROIT APP CON
124.975 284.0



- NOTE: RADAR required.
 NOTE: RNAV 1.
 NOTE: DME/DME/IRU or GPS required.
 NOTE: Expect Rwy 4L.
 NOTE: For use when DTW landing north.
 When DTW landing south or west, file and expect the VCTRZ RNAV STAR.
 NOTE: For use by flights departing MDW, SBN, AZO, MCI, LAS, LAX, PHX, SAN, SNA airports only, or as assigned by ATC.

ARRIVAL ROUTE DESCRIPTION

HOSSA TRANSITION (HOSSA.HAYLL3)

SAMPL TRANSITION (SAMPL.HAYLL3)

From HAYLL on track 090° to cross VCTRZ between 8000 and 10000, then on track 074° to MAAZE, then on track 141° to cross GRBAC at 5000 and at 210K, then on track 141°. Expect RADAR vectors to final approach course.

LOST COMMUNICATIONS

From GRBAC, execute RNAV (GPS) Y RWY 4L approach or ILS Y RWY 4L approach.

NOTE: Chart not to scale.

HAYLL THREE ARRIVAL (RNAV)

(HAYLL.HAYLL3) 10OCT19

DETROIT, MICHIGAN
DETROIT METRO WAYNE COUNTY (DTW)

EC-1, 26 DEC 2024 to 23 JAN 2025