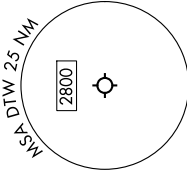
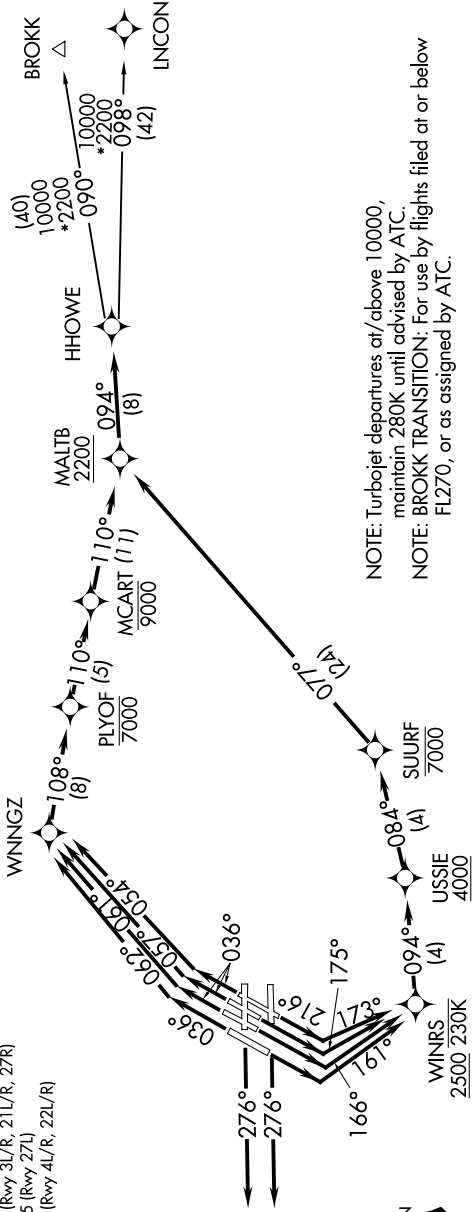


EC-1, 26 DEC 2024 to 23 JAN 2025

**TOP ALTITUDE:**  
**17000**

RNAV-1 DME/DME/IRU or GPS.  
RADAR required.

DETROIT DEP CON  
125.525 284.0 (Rwy 27L/R)  
132.025 284.0 (Rwy 3L/R, 4L/R, 21L/R, 22L/R)  
D-ATIS 118.125  
CLNC DEL 120.65  
CPDIC  
GND CON  
121.8 (NW) 119.45 (NE)  
132.725 (SW) 119.25 (SE)  
METRO TOWER  
118.4 317.725 (Rwy 3L/R, 21L/R, 27R)  
128.75 317.725 (Rwy 27L)  
135.0 317.725 (Rwy 4L/R, 22L/R)



**TAKEOFF MINIMUMS:**  
Rwy 27L/R: Standard  
Rwy 3L/R, 4L/R, 21L/R, 22L/R: Standard with minimum climb of 500' / NM to 1146.

NOTE: Turbojet departures at/above 10000, maintain 280K until advised by ATC.  
NOTE: BROKK TRANSITION: For use by flights filed at or below FL270, or as assigned by ATC.

(CONTINUED ON FOLLOWING PAGE)

NOTE: Chart not to scale.