

LOC/DME I-HUU <b>111.5</b> Chan <b>52</b>	APP CRS <b>036°</b>	Rwy ldg <b>10001</b> TDZE <b>633</b> Apt Elev <b>645</b>
---	------------------------	--

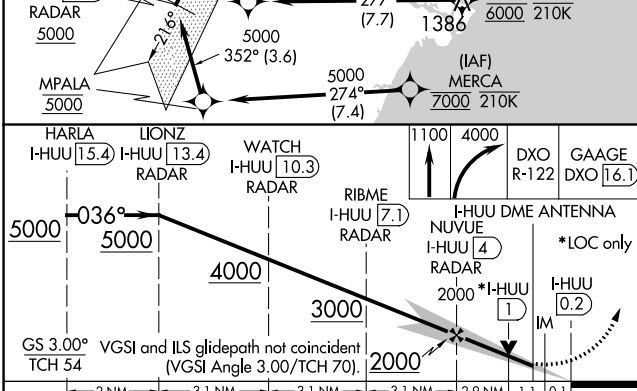
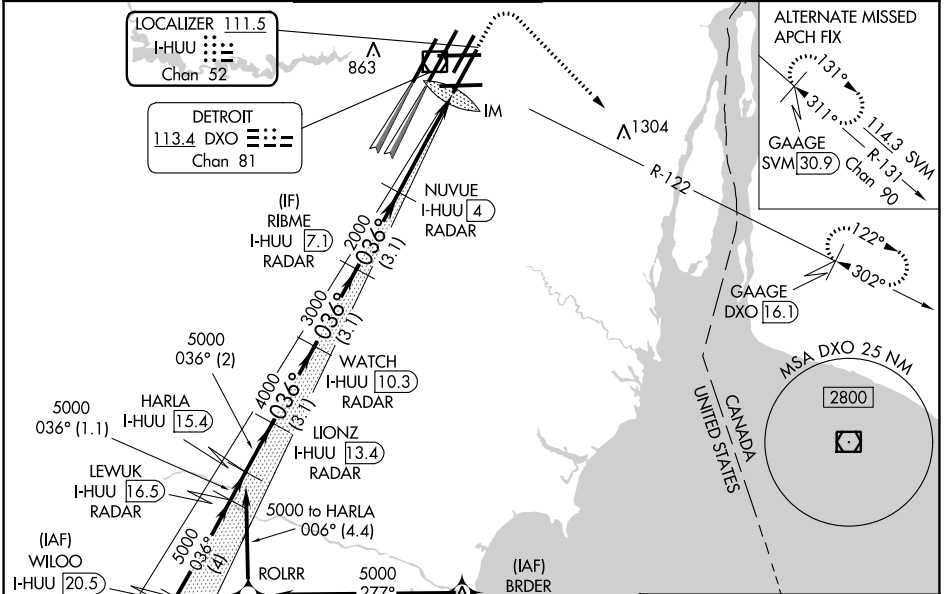
# ILS or LOC RWY 3R

DETROIT METRO WAYNE COUNTY (DTW)

RNAV 1-GPS.  
 MERCA and BRDER: RNAV 1-DME/DME/IRU or GPS required. Aircraft not DME/DME/IRU or GPS equipped - RADAR required for procedure entry.  
 Simultaneous approach authorized. DME required.

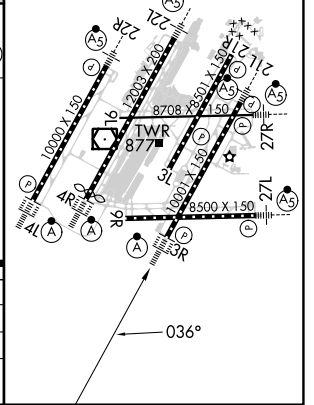
ALSF-2  
 MISSED APPROACH: Climb to 1100 then climbing right turn to 4000 on DXO VOR/DME R-122 to GAAGE/DXO 16.1 DME and hold.

D-ATIS <b>133.675</b>	DETROIT APP CON <b>125.15 284.0</b>	METRO TOWER <b>118.4 317.725</b>	GND CON <b>121.8 (NW) 119.45 (NE)</b> <b>132.725 (SW) 119.25 (SE)</b>	CLNC DEL <b>120.65</b>	CPDLC
--------------------------	--	-------------------------------------	---	---------------------------	-------



ELEV 645	TDZE 633
----------	----------

HIRL all runways  
 REL Rwy 3L, 9L, 9R and 21R  
 TDZ/CL Rwy 3R, 4L, 4R and 22R



CATEGORY	A	B	C	D
S-ILS 3R	833/18 200 (200-½)			
S-LOC 3R	1080/24	447 (500-½)	1080/45	447 (500-¾)
CIRCLING	1180-1	535 (600-1)	1180-1½ 535 (600-1½)	1240-2 595 (600-2)

EC-1, 26 DEC 2024 to 23 JAN 2025

EC-1, 26 DEC 2024 to 23 JAN 2025