

DETROIT, MICHIGAN

AL-119 (FAA)

# ILS PRM RWY 4R (CLOSE PARALLEL)

24249

LOC/DME I-DTW <b>110.7</b>	APP CRS <b>036°</b>	Rwy Idg <b>11494</b>
Chan <b>44</b>		TDZE <b>640</b>
		Apt Elev <b>645</b>

DETROIT METRO WAYNE COUNTY (DTW)

RNAV 1-GPS.

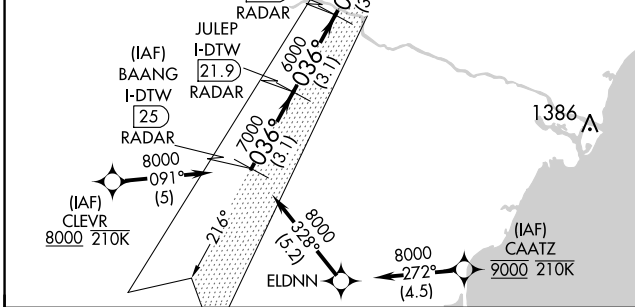
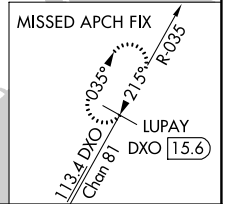
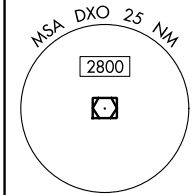
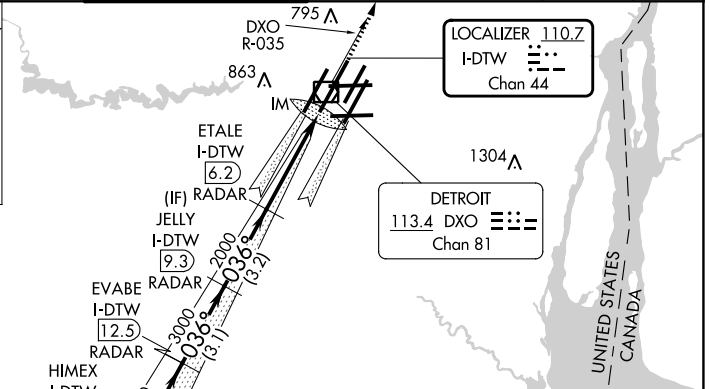
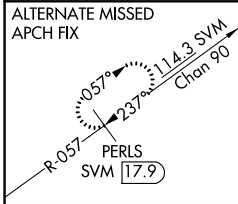
DME or RADAR required. CLEVR, CAATZ and ELDNN: RNAV 1-DME/DME/IRU or GPS required. Aircraft not DME/DME/IRU or GPS equipped- RADAR required for procedure entry.

ALSF-2

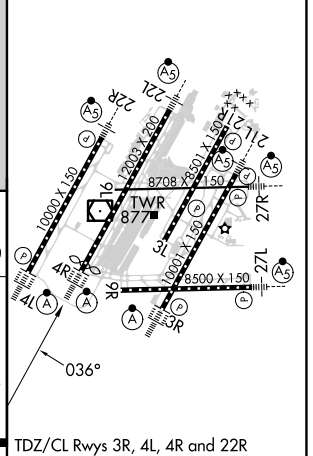
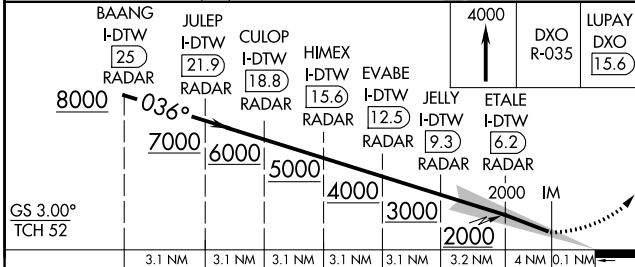
MISSED APPROACH:  
Climb to 4000 on DXO  
VOR/DME R-035 to  
LUPAY/DXO VOR/DME  
15.6 DME and hold.

Simultaneous approach authorized. Use of FD or AP required during simultaneous operations. Dual VHF Comm required. See additional requirements on AAUP. Procedure NA when glideslope not available.

D-ATIS <b>133.675</b>	DETROIT APP CON <b>124.05 284.0</b>	METRO TOWER <b>128.125 317.725</b> <b>PRM 135.775</b>	GND CON <b>121.8</b> (NW) <b>119.45</b> (NE) <b>132.725</b> (SW) <b>119.25</b> (SE)	CLNC DEL <b>120.65</b>	CPDLC
--------------------------	--	---	---	---------------------------	-------



ELEV 645 TDZE 640



CATEGORY	A	B	C	D
S-ILS 4R		840/18	200 (200-1/2)	

TDZ/CL Rwy 3R, 4L, 4R and 22R  
REIL Rwy 3L, 9L, 9R and 21R  
HIRL all runways

DETROIT, MICHIGAN  
Amdt 3A 13SEP18

42°13'N-83°21'W

DETROIT METRO WAYNE COUNTY (DTW)  
ILS PRM RWY 4R (CLOSE PARALLEL)

EC-1, 26 DEC 2024 to 23 JAN 2025

EC-1, 26 DEC 2024 to 23 JAN 2025