

DETROIT, MICHIGAN

AL-119 (FAA)

ILS PRM RWY 4R (SA CAT I)


24249

(CLOSE PARALLEL)

DETROIT METRO WAYNE COUNTY (DTW)

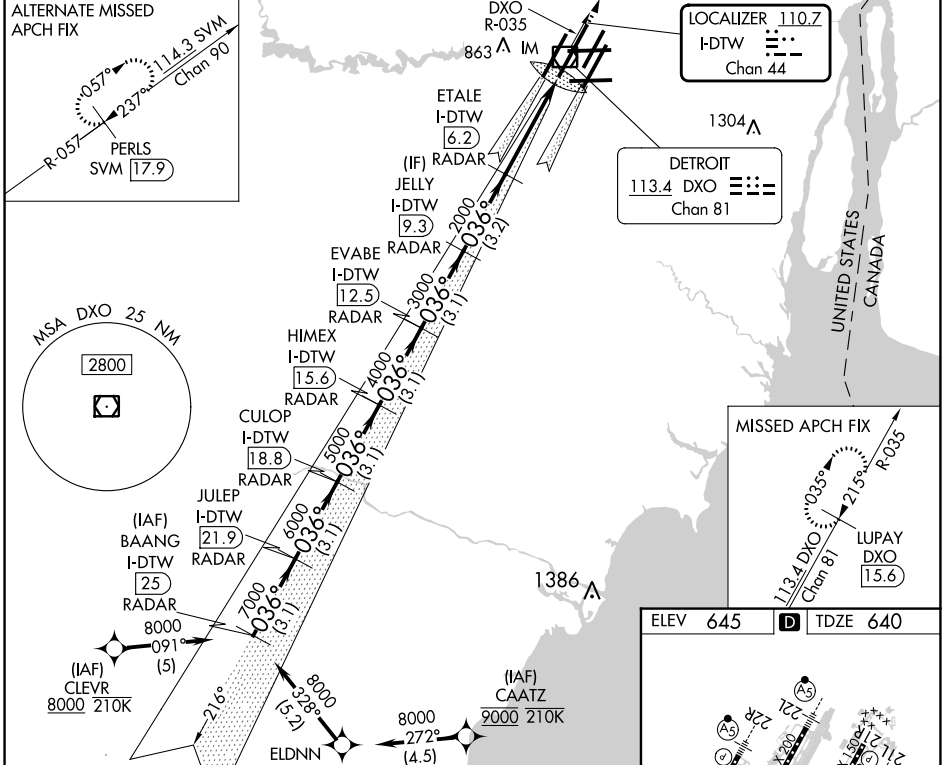
LOC/DME I-DTW <b>110.7</b>	APP CRS <b>036°</b>	Rwy Idg <b>11494</b>
Chan <b>44</b>		TDZE <b>640</b>
		Apt Elev <b>645</b>

RNAV 1-GPS. DME or RADAR required. CLEVR, CAATZ and ELDNN: RNAV 1-DME/DME/IRU or GPS required. Aircraft not DME/DME/IRU or GPS equipped- RADAR required for procedure entry.

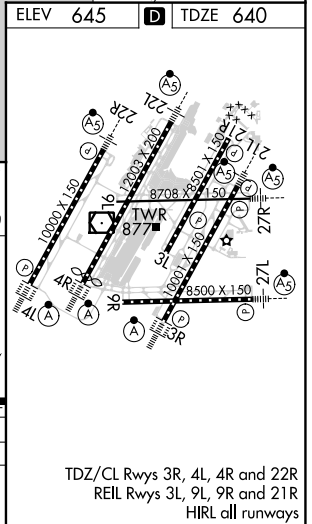
ALSIF-2  
  
 MISSED APPROACH:  
 Climb to 4000 on DXO  
 VOR/DME R-035 to  
 LUPAY/DXO VOR/DME  
 15.6 DME and hold.

Simultaneous approach authorized. Use of FD or AP required during simultaneous operations. Dual VHF Comm required. See additional requirements on AAUP. Procedure NA when glideslope not available. Requires specific OPSPEC, MSPEC, or LOA approval and use of HUD to DH.

D-ATIS <b>133.675</b>	DETROIT APP CON <b>124.05 284.0</b>	METRO TOWER <b>128.125 317.725</b> <b>PRM 135.775</b>	GND CON <b>121.8 (NW) 119.45 (NE)</b> <b>132.725 (SW) 119.25 (SE)</b>	CLNC DEL <b>120.65</b>	CPDLC
--------------------------	--	---	---	---------------------------	-------



BAANG I-DTW (25) RADAR	JULEP I-DTW (21.9) RADAR	CULOP I-DTW (18.8) RADAR	HIMEX I-DTW (15.6) RADAR	EVABE I-DTW (12.5) RADAR	JELLY I-DTW (9.3) RADAR	ETALE I-DTW (6.2) RADAR	IM
8000	7000	6000	5000	4000	3000	2000	1000
3.1 NM	3.1 NM	3.1 NM	3.1 NM	3.1 NM	3.2 NM	4.1 NM	980'



CATEGORY	A	B	C	D
S-ILS 4R	RA 154/14		150 DA 790	

**SA CATEGORY I ILS - SPECIAL AIRCREW & AIRCRAFT CERTIFICATION REQUIRED**

TDZ/CL Rwy's 3R, 4L, 4R and 22R  
 REL Rwy's 3L, 9L, 9R and 21R  
 HIRL all runways

DETROIT, MICHIGAN  
 Amdt 3A 13SEP18

42°13'N-83°21'W

DETROIT METRO WAYNE COUNTY (DTW)

ILS PRM RWY 4R (SA CAT I) (CLOSE PARALLEL)

EC-1, 26 DEC 2024 to 23 JAN 2025

EC-1, 26 DEC 2024 to 23 JAN 2025