

LOC/DME I-ALA 111.75	APP CRS 038°	Rwy Idg TDZE Apt Elev	10000 645 645
Chan 54 (Y)			

ILS PRM Y RWY 4L (CLOSE PARALLEL)

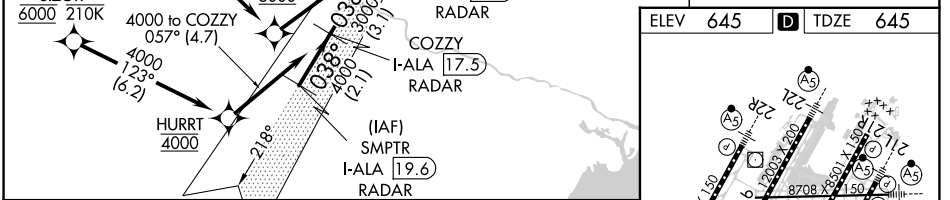
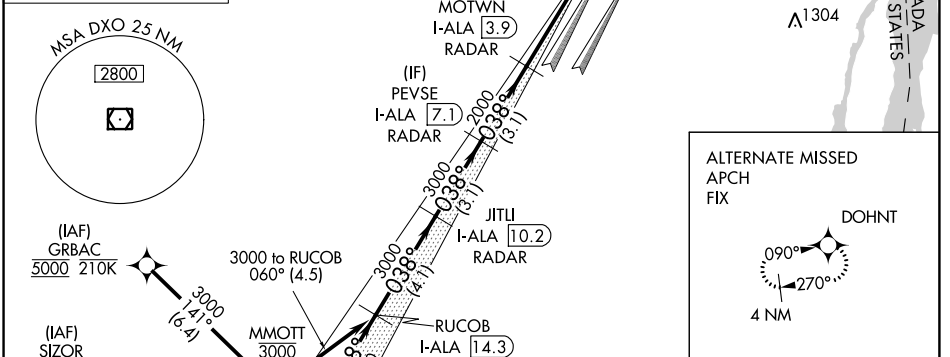
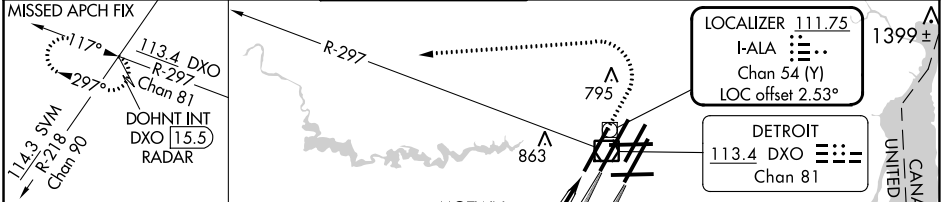
DETROIT METRO WAYNE COUNTY (DTW)

From GRBAC, SIZOR: RNAV 1-DME/DME/IRU or GPS required.
Aircraft not DME/DME/IRU or GPS equipped - RADAR required for procedure entry.
DME or RADAR required.

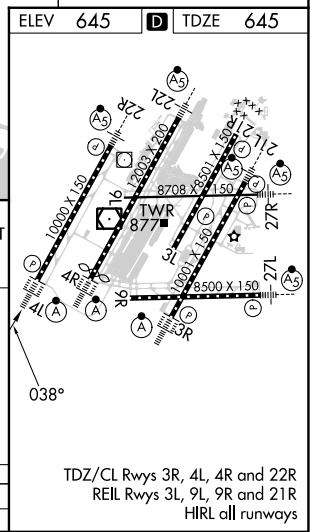
ALSF-2
MISSED APPROACH: Climb to 1100 then climbing left turn to 4000 on DXO VOR/DME R-297 to DOHNT INT/DXO 15.5 DME/RADAR and hold.

Rwy 4L and 4R separated by 3000 feet centerline to centerline. Simultaneous approach authorized. Use of FD or AP required during simultaneous operations. Dual VHF Comm required. See additional requirements on AAUP.

D-ATIS 133.675	DETROIT APP CON 124.05 284.0	METRO TOWER 135.0 317.725 PRM 127.05	GND CON 121.8 (NW) 119.45 (NE) 132.725 (SW) 119.25 (SE)	CLNC DEL 120.65	CPDLC
--------------------------	--	--	---	---------------------------	-------



VGS1 and ILS glidepath not coincident (VGS1 Angle 3.00/TCH 71).																			
RUCOB I-ALA [14.3] RADAR	JITLI I-ALA [10.2] RADAR	PEVSE I-ALA [7.1] RADAR	MOTWN I-ALA [3.9] RADAR	DOHNT INT															
<table border="1"> <tr> <td>↑</td> <td>↶</td> <td>DXO R-297</td> <td>DOHNT INT</td> </tr> </table>					↑	↶	DXO R-297	DOHNT INT											
↑	↶	DXO R-297	DOHNT INT																
<table border="1"> <tr> <td>3000</td> <td>3000</td> <td>3000</td> <td>2000</td> <td>I-ALA DME ANTENNA</td> </tr> <tr> <td>GS 3.00°</td> <td>038°</td> <td>3000</td> <td>3000</td> <td></td> </tr> <tr> <td>4.1 NM</td> <td>3.1 NM</td> <td>3.1 NM</td> <td>4.1 NM</td> <td></td> </tr> </table>					3000	3000	3000	2000	I-ALA DME ANTENNA	GS 3.00°	038°	3000	3000		4.1 NM	3.1 NM	3.1 NM	4.1 NM	
3000	3000	3000	2000	I-ALA DME ANTENNA															
GS 3.00°	038°	3000	3000																
4.1 NM	3.1 NM	3.1 NM	4.1 NM																
CATEGORY	A	B	C	D															
S-ILS 4L		895/24	250 (300-1/2)																



EC-1, 26 DEC 2024 to 23 JAN 2025

EC-1, 26 DEC 2024 to 23 JAN 2025