

DETROIT, MICHIGAN

AL-119 (FAA)

24249

LOC/DME I-JKI 111.95	APP CRS 216°	Rwy Idg TDZE Apt Elev	10000 642 645
Chan 56 (Y)			

ILS PRM Z RWY 22R (SA CAT I & II) (CLOSE PARALLEL)

DETROIT METRO WAYNE COUNTY (DTW)

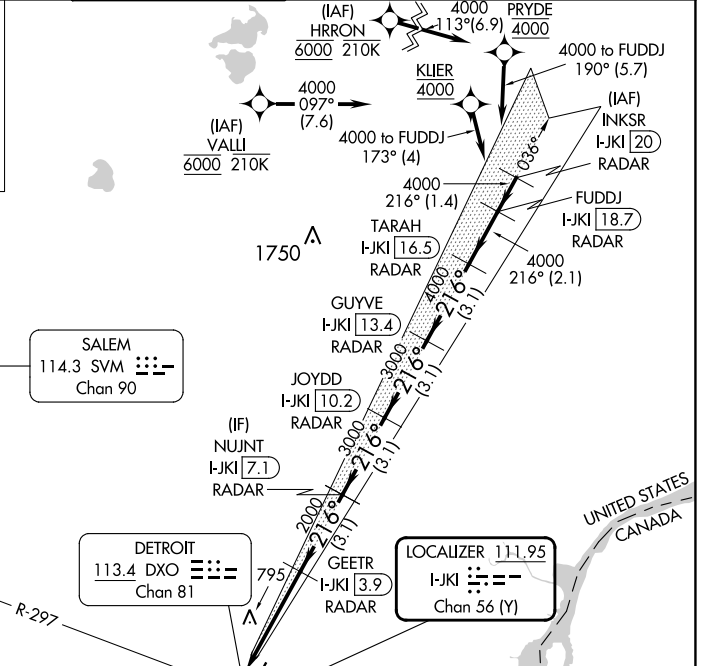
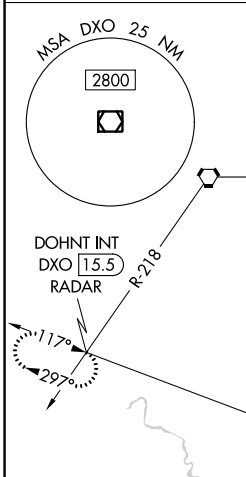
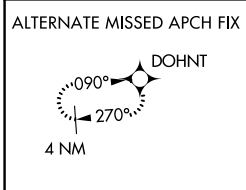
RNAV 1-GPS, HRRON and VALLI: RNAV 1-DME/DME/IRU or GPS required.
Aircraft not DME/DME/IRU or GPS equipped - RADAR required for procedure entry.

Simultaneous approach authorized. Use of FD or AP required during simultaneous operations. Dual VHF Comm required. See additional requirements on AAUP.
SA CAT I: Requires specific OPSPEC, MSPEC, or LOA approval and use of HUD to DH.
SA CAT II: Reduced lighting: Requires specific OPSPEC, MSPEC, or LOA approval and use of autoland or HUD to touchdown.

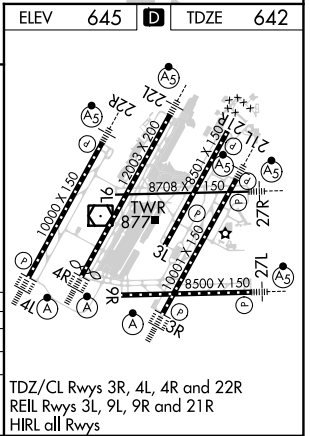
MALS R

MISSED APPROACH: Climb to 1100 then climbing right turn to 4000 on DXO VOR/DME R-297 to DOHNT INT/ DXO 15.5 DME/RADAR and hold.

D-ATIS 133.675	DETROIT APP CON 124.05 284.0	METRO TOWER 135.0 317.25 PRM 127.05	GND CON 121.8 (NW) 119.45 (NE) 132.725 (SW) 119.25 (SE)	CLNC DEL 120.65	CPDLC
--------------------------	--	---	---	---------------------------	-------



1100	4000	DXO R-297	DOHNT INT	VGS1 and ILS glidepath not coincident (VGS1 Angle 3.00/TCH 71).			
I-JKI DME ANTENNA	GEETR I-JKI [3.9] RADAR	NUJNT I-JKI [7.1] RADAR	JOYDD I-JKI [10.2] RADAR	GUYVE I-JKI [13.4] RADAR	TARAH I-JKI [16.5] RADAR	FUDDJ I-JKI [18.7] RADAR	216° 4000
	2000	3000	3000	4000	4000		GS 3.00° TCH 55
1058	4.1 NM	3.1 NM	3.1 NM	3.1 NM	3.1 NM	2.1 NM	
CATEGORY	A	B	C	D			
S-ILS 22R	SA CAT I			RA 148/14		150 DA 792	
S-ILS 22R	SA CAT II			RA 98/12		100 DA 742	



DETROIT, MICHIGAN
Orig-B 30JAN20

42°13'N-83°21'W

DETROIT METRO WAYNE COUNTY (DTW)

ILS PRM Z RWY 22R (SA CAT I & II) (CLOSE PARALLEL)

TDZ/CL Rwy 3R, 4L, 4R and 22R
REIL Rwy 3L, 9L, 9R and 21R
HIRL all Rwy

EC-1, 26 DEC 2024 to 23 JAN 2025

EC-1, 26 DEC 2024 to 23 JAN 2025