

LOC/DME I-BZB 111.75 Chan 54 (Y)	APP CRS 213°	Rwy Idg TDZE Apt Elev	10000 642 645
------------------------------------------------------	------------------------	-----------------------------	------------------------------------------

ILS Y RWY 22R

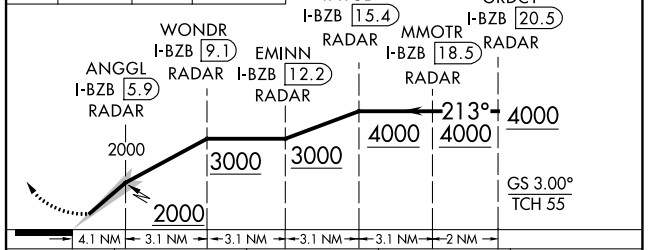
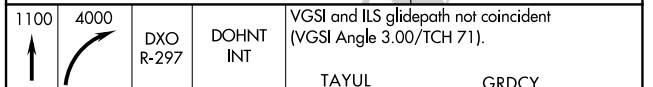
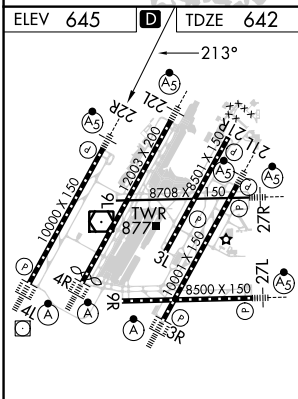
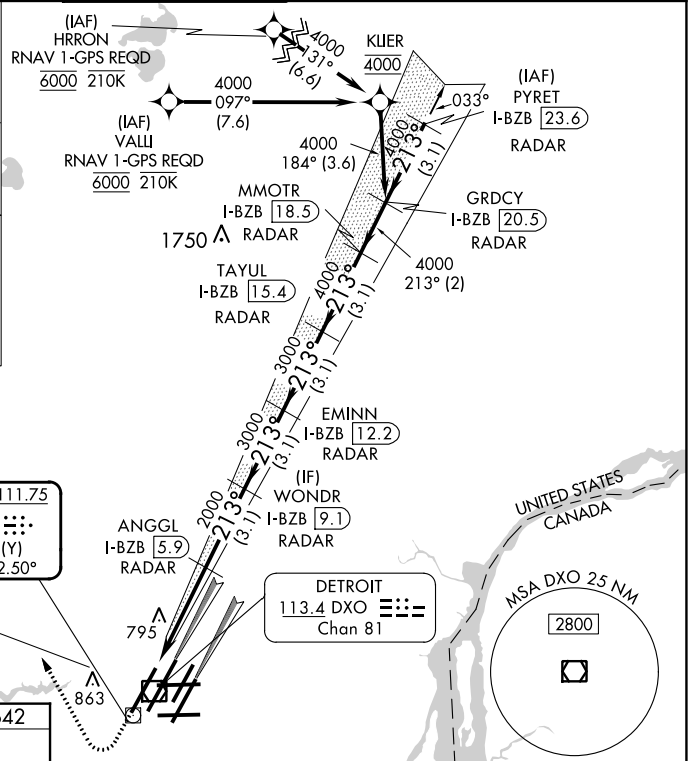
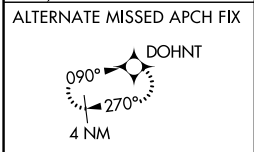
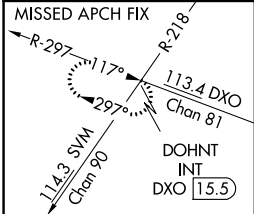
DETROIT METRO WAYNE COUNTY (DTW)

RNAV 1-GPS. HRRON and VALLI: RNAV 1-DME/DME/IRU or GPS required. Aircraft not DME/DME/IRU or GPS equipped - RADAR required for procedure entry.

MALSRS MISSED APPROACH: Climb to 1100 then climbing right turn to 4000 on DXO VOR/DME R-297 to DOHNT INT/DXO 15.5 DME and hold.

Simultaneous approach authorized.

D-ATIS 133.675	DETROIT APP CON 124.05 284.0	METRO TOWER 135.0 317.725	GND CON 121.8 (NW) 119.45 (NE) 132.725 (SW) 119.25 (SE)	CLNC DEL 120.65	CPDLC
--------------------------	----------------------------------------	-------------------------------------	-----------------------------------------------------------------------------	---------------------------	-------



TDZ/CL Rwy 3R, 4L, 4R and 22R REIL Rwy 3L, 9L, 9R and 21R HIRL all runways	CATEGORY	A	B	C	D
	S-ILS 22R	892/24 250 (300-1/2)			

EC-1, 26 DEC 2024 to 23 JAN 2025

EC-1, 26 DEC 2024 to 23 JAN 2025