

LOC/DME I-HJT <b>111.95</b> Chan <b>56(Y)</b>	APP CRS <b>036°</b>	Rwy Idg TDZE Apt Elev	<b>10000</b> <b>645</b> <b>645</b>
---	------------------------	-----------------------------	--

# ILS Z or LOC RWY 4L

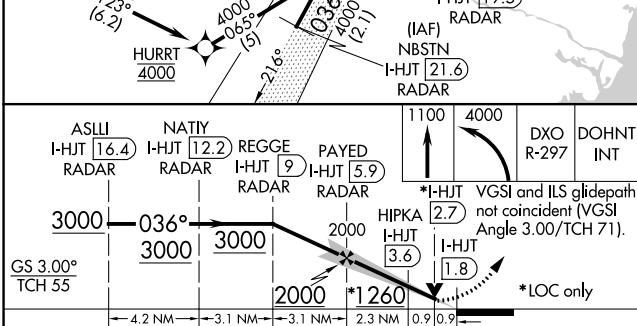
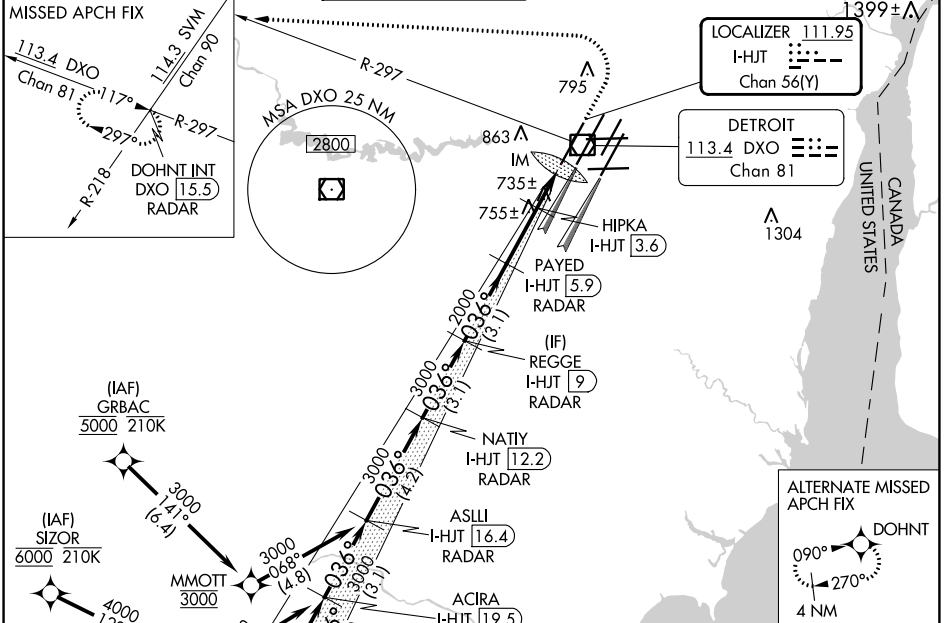
DETROIT METRO WAYNE COUNTY (DTW)

From GRBAC, SIZOR: RNAV 1-DME/DME/IRU or GPS required. Aircraft not DME/DME/IRU or GPS equipped - RADAR required for procedure entry. DME or RADAR required.

ALSF-2  
MISSED APPROACH: Climb to 1100 then climbing left turn to 4000 on DXO VOR/DME I-HJT to DOHNT INT/DXO 15.5 DME/RADAR and hold.

Simultaneous approach authorized.

D-ATIS <b>133.675</b>	DETROIT APP CON <b>124.05 284.0</b>	METRO TOWER <b>135.0 317.725</b>	GND CON <b>121.8 (NW)</b> <b>132.725 (SW)</b>	CON <b>119.45 (NE)</b> <b>119.25 (SE)</b>	CLNC DEL <b>120.65</b>	CPDLC
--------------------------	--	-------------------------------------	---	---	---------------------------	-------



ELEV 645	<b>D</b> TDZE 645
TDZ/CL Rwy's 3R, 4L, 4R and 22R REL Rwy's 3L, 9L, 9R and 21R HIRL all runways	
FAF to MAP 4.1 NM	
Knots	60 90 120 150 180
Min:Sec	4:06 2:44 2:03 1:38 1:22

CATEGORY	A	B	C	D
S-ILS 4L	845/18 200 (200-1/2)			
S-LOC 4L	1260/24	615 (700-1/2)	1260-1 3/4	615 (700-1 3/4)
<b>C</b> CIRCLING	1260-1	615 (700-1)	1260-1 3/4	615 (700-2)
HIPKA FIX MINIMUMS (DME REQUIRED)				
S-LOC 4L	1000/24	355 (400-1/2)	1000/30	355 (400-5/8)
<b>C</b> CIRCLING	1180-1	535 (600-1)	1180-1 1/2	535 (600-1 1/2)
			1240-2	595 (600-2)

EC-1, 26 DEC 2024 to 23 JAN 2025

EC-1, 26 DEC 2024 to 23 JAN 2025