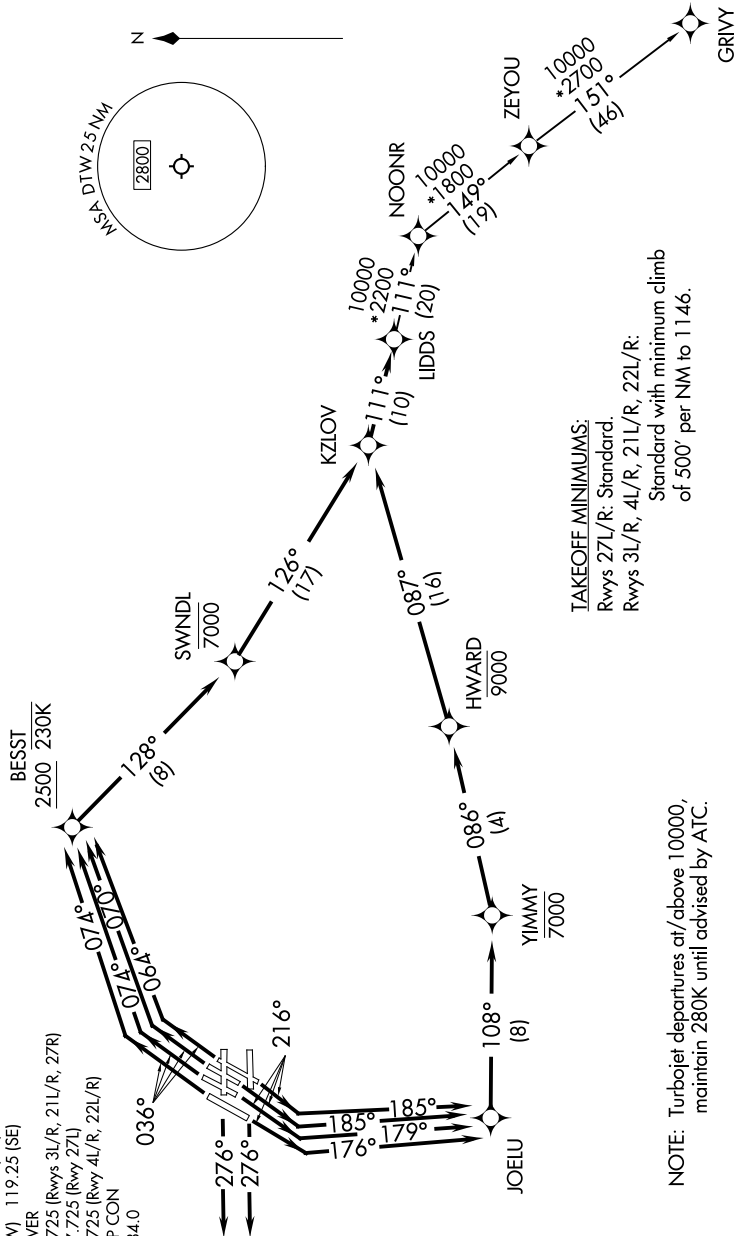
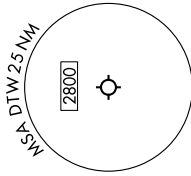
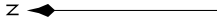


LIDDS THREE DEPARTURE (RNAV)

**TOP ALTITUDE:
17000**



RNAV 1 - DME/DME/IRU or GPS.
RADAR required.

- D-ATIS 118.125
- CINC DEL 120.65
- CPDLC
- GND CON
- 121.8 (NW) 119.45 (NE)
- 132.725 (SW) 119.25 (SE)
- METRO TOWER
- 118.4 317.725 (Rwys 3L/R, 21L/R, 27R)
- 128.75 317.725 (Rwy 27L)
- 135.0 317.725 (Rwy 4L/R, 22L/R)
- DETROIT DEP CON
- 132.025 284.0

TAKOFF MINIMUMS:
Rwys 27L/R: Standard
Rwys 3L/R, 4L/R, 21L/R, 22L/R:
Standard with minimum climb
of 500' per NM to 1146.

NOTE: Turbojet departures at/above 10000,
maintain 280K until advised by ATC.

NOTE: Chart not to scale.

(CONTINUED ON FOLLOWING PAGE)

LIDDS THREE DEPARTURE (RNAV)