

(MIGGY3.MIGGY) 24137

DETROIT METRO WAYNE COUNTY (DTW)

MIGGY THREE DEPARTURE (RNAV)

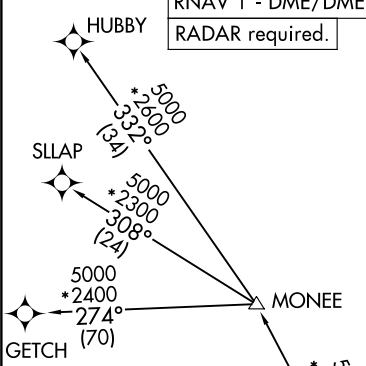
AL-119 (FAA)

DETROIT, MICHIGAN

RNAV 1 - DME/DME/IRU or GPS.  
RADAR required.

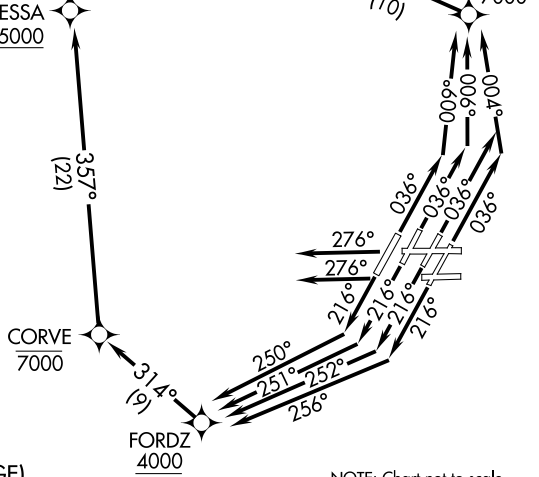
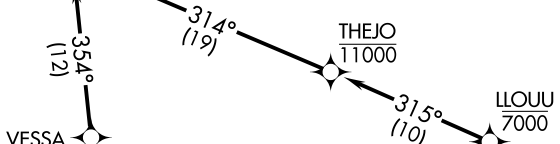
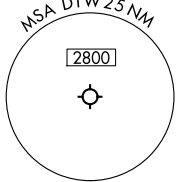
**TOP ALTITUDE:**  
**17000**

D-ATIS 118.125  
CLNC DEL 120.65  
CPDLC  
GND CON  
121.8 (NW) 119.45 (NE)  
132.725 (SW) 119.25 (SE)  
METRO TOWER  
118.4 317.725 (Rwys 3L/R, 21L/R, 27R)  
128.75 317.725 (Rwy 27L)  
135.0 317.725 (Rwys 4L/R, 22L/R)  
DETROIT DEP CON  
125.525 284.0



NOTE: Jet departures at/above 10000, maintain 280K until advised by ATC.  
NOTE: GETCH TRANSITION: For use by KMKE area arrivals only, or as assigned by ATC.

TAKEOFF MINIMUMS:  
Rwys 27L/R: Standard.  
Rwys 3L/R, 4L/R, 21L/R, 22L/R: Standard with minimum climb of 500' per NM to 1146.



(CONTINUED ON FOLLOWING PAGE)

NOTE: Chart not to scale.

EC-1, 26 DEC 2024 to 23 JAN 2025

EC-1, 26 DEC 2024 to 23 JAN 2025

MIGGY THREE DEPARTURE (RNAV)

DETROIT, MICHIGAN

(MIGGY3.MIGGY) 16MAY24

DETROIT METRO WAYNE COUNTY (DTW)