

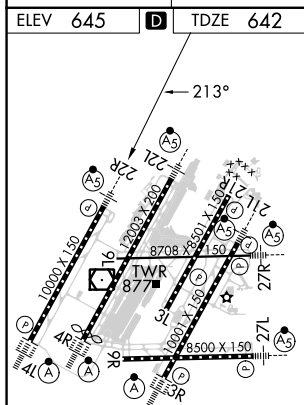
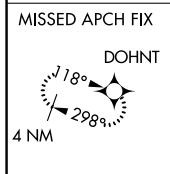
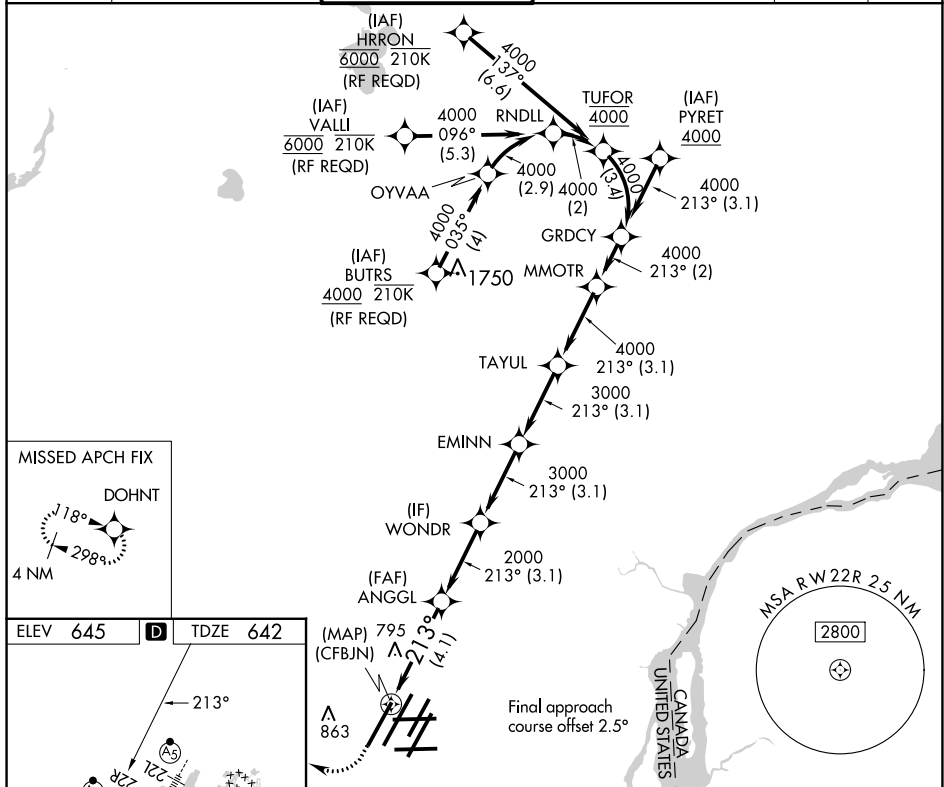
APP CRS 213°	Rwy Idg 10000
TDZE 642	Apt Elev 645

RNAV (RNP) U RWY 22R

DETROIT METRO WAYNE COUNTY (DTW)

RNP AR APCH.	MALSR 	MISSED APPROACH: Climb to 1100 then climbing right turn to 4000 direct DOHNT and hold.
<p>▼ For uncompensated Baro-VNAV systems, procedure NA below -19°C (-2°F) or above 54°C (130°F). Simultaneous approach authorized. For inop ALS, increase RNP 0.30 all Cats visibility to RVR 5500.</p>		

D-ATIS 133.675	DETROIT APP CON 124.05 284.0	METRO TOWER 135.0 317.725	GND CON 121.8 (NW) 119.45 (NE) 132.725 (SW) 119.25 (SE)	CLNC DEL 120.65	CPDLC
--------------------------	--	-------------------------------------	---	---------------------------	-------



1100	4000	DOHNT	VGSi and RNAV glidepath not coincident (VGSi Angle 3.00/TCH 71).			
ANGGL (CFBJN) 2000		WONDR 3000	EMINN 3000	TAYUL 4000	MMOTR 4000	GRDCY 4000
4.1 NM		3.1 NM	3.1 NM	3.1 NM	3.1 NM	2 NM
CATEGORY	A	B	C	D		
RNP 0.30 DA	987/30		345 (400-5%)			

TDZ/CL Rwy 3R, 4L, 4R and 22R
HIRL all runways
REIL Rwy 3L, 9L, 9R and 21R

AUTHORIZATION REQUIRED

EC-1, 26 DEC 2024 to 23 JAN 2025

EC-1, 26 DEC 2024 to 23 JAN 2025