

APP CRS	Rwy Idg	11494
036°	TDZE	640
	Apt Elev	645

RNAV (RNP) X RWY 4R

DETROIT METRO WAYNE COUNTY (DTW)

RNP AR APCH.	For uncompensated Baro-VNAV systems, procedure NA below -19°C (-2°F) or above 54°C (130°F). Simultaneous approach authorized.

ALSF-2		MISSED APPROACH: Climb to 4000 direct LUPAY and hold.

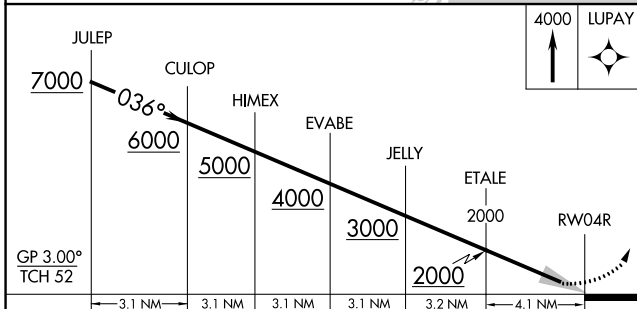
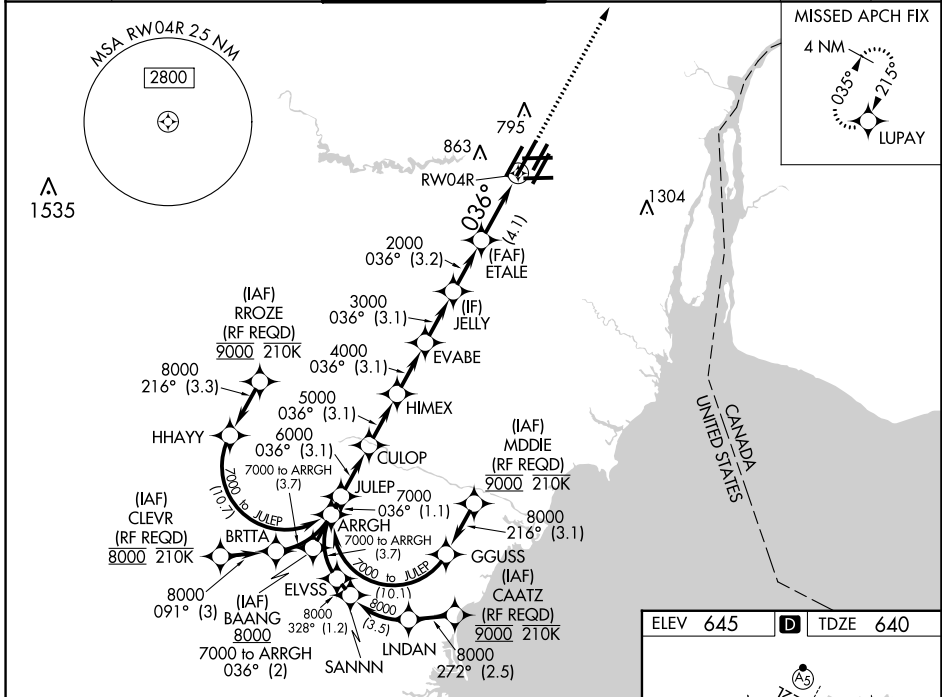
D-ATIS	133.675
--------	----------------

DETROIT APP CON	124.05 284.0
-----------------	---------------------

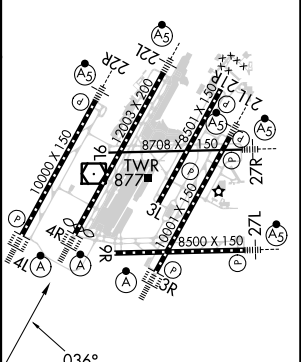
METRO TOWER	128.125 317.725
-------------	------------------------

GND CON	121.8 (NW)	119.45 (NE)
	132.725 (SW)	119.25 (SE)

CLNC DEL	120.65
CPDLC	



ELEV 645	D	TDZE 640
----------	----------	----------



CATEGORY	A	B	C	D
RNP 0.30 DA		1031/35	391 (400- $\frac{2}{3}$)	

AUTHORIZATION REQUIRED

TDZ/CL Rwy 3R, 4L, 4R and 22R
 REIL Rwy 3L, 9L, 9R and 21R
 HIRL all runways

EC-1, 26 DEC 2024 to 23 JAN 2025

EC-1, 26 DEC 2024 to 23 JAN 2025