

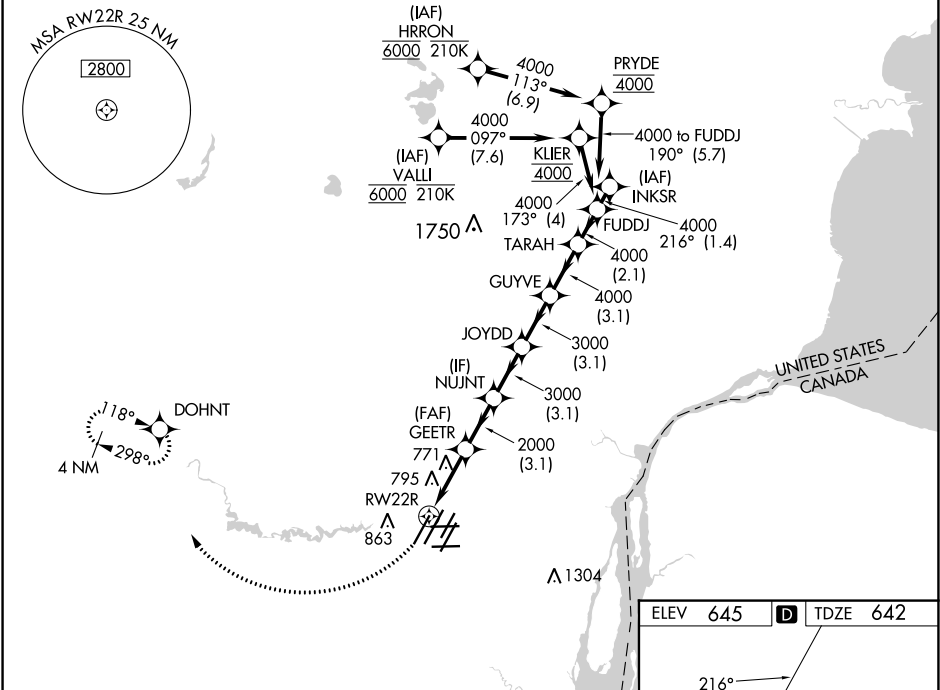
WAAS CH 70642 W22D	APP CRS 216°	Rwy Idg TDZE 642 Apt Elev 645	10000
--	------------------------	---	--------------

RNAV (GPS) Z RWY 22R

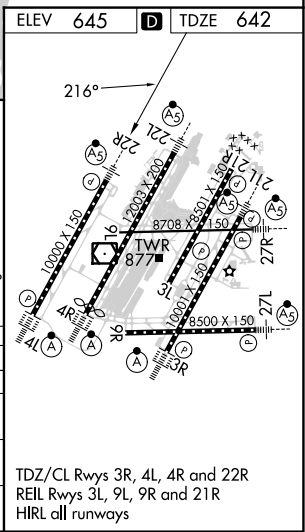
DETROIT METRO WAYNE COUNTY (DTW)

RNP APCH.	<p>Simultaneous approach authorized. Use of FD or AP required during simultaneous operations. LNAV procedure NA during simultaneous operations. For uncompensated Baro-VNAV systems, LNAV/VNAV NA below -1°C or above 54°C. For inop ALS, increase LNAV/VNAV all Cats visibility to RVR 4500.</p>	<p>MALS R</p>	<p>MISSED APPROACH: Climb to 1100 then climbing right turn 4000 direct DOHNT and hold, continue climb in hold to 4000.</p>
-----------	---	---------------	--

D-ATIS 133.675	DETROIT APP CON 124.05 284.0	METRO TOWER 128.125 317.725	GND CON 121.8 (NW) 119.45 (NE) 132.725 (SW) 119.25 (SE)	CLNC DEL 120.65	CPDLC
--------------------------	--	---------------------------------------	---	---------------------------	-------



1100	4000	DOHNT	VGSI and RNAV glidepath not coincident (VGSI Angle 3.00/ TCH 71)	
<p>*LNAV only.</p> <p>*1 NM to RW22R</p>				
CATEGORY	A	B	C	D
LPV DA		842/18	200 (200-½)	
LNAV/VNAV DA		948/24	306 (400-½)	
LNAV MDA	1040/24	398 (400-½)	1040/35	398 (400-¾)
CIRCLING	1180-1	535 (600-1)	1180-1½	1240-2
			535 (600-½)	595 (600-2)



EC-1, 26 DEC 2024 to 23 JAN 2025

EC-1, 26 DEC 2024 to 23 JAN 2025