

TPGUN TWO ARRIVAL(RNAV)

AL-119 (FAA)

DETROIT, MICHIGAN

EC-1, 26 DEC 2024 to 23 JAN 2025

NOTE: RADAR required.

NOTE: RNAV 1.

NOTE: DME/DME/IRU or GPS required.

NOTE: Expect Rwy 21L.

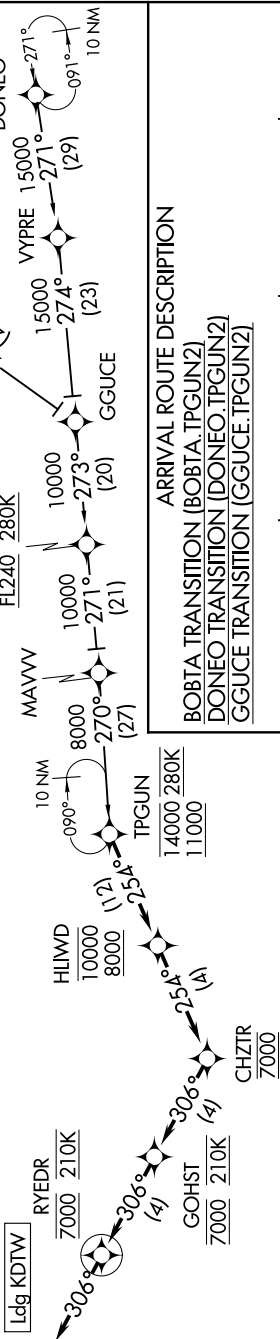
NOTE: Jet aircraft descend via Mach number until intercepting

280K. Maintain 280K until slowed by the STAR.

NOTE: For use when DTW landing south or west. When DTW

landing north, file and expect the CUUGR RNAV STAR.

NOTE: GGUCE TRANSITION: Except for flights originating in Canada, do not file, to be assigned by ATC.



ARRIVAL ROUTE DESCRIPTION

- BOBTA TRANSITION (BOBTA.TPGUN2)
- DONEO TRANSITION (DONEO.TPGUN2)
- GGUCE TRANSITION (GGUCE.TPGUN2)

From TPGUN on track 254° to cross HLIWD between 8000 and 10000, then on track 254° to CHZTR at 7000, then on track 306° to cross GOHST at 7000 and at 210K, then on track 306° to cross RYEDR at 7000 and at 210K, then on track 306°. Expect RADAR vectors to final approach course.

LOST COMMUNICATIONS:

From RYEDR, execute ILS Rwy 21L approach.

NOTE: Chart not to scale.

TPGUN TWO ARRIVAL (RNAV)

EC-1, 26 DEC 2024 to 23 JAN 2025