

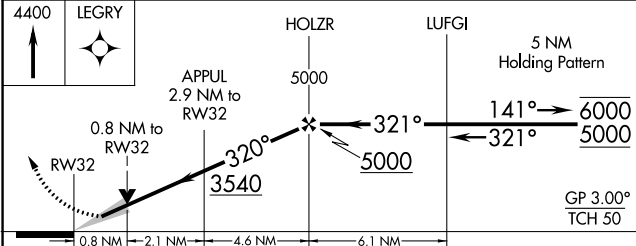
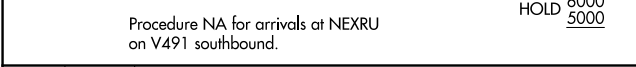
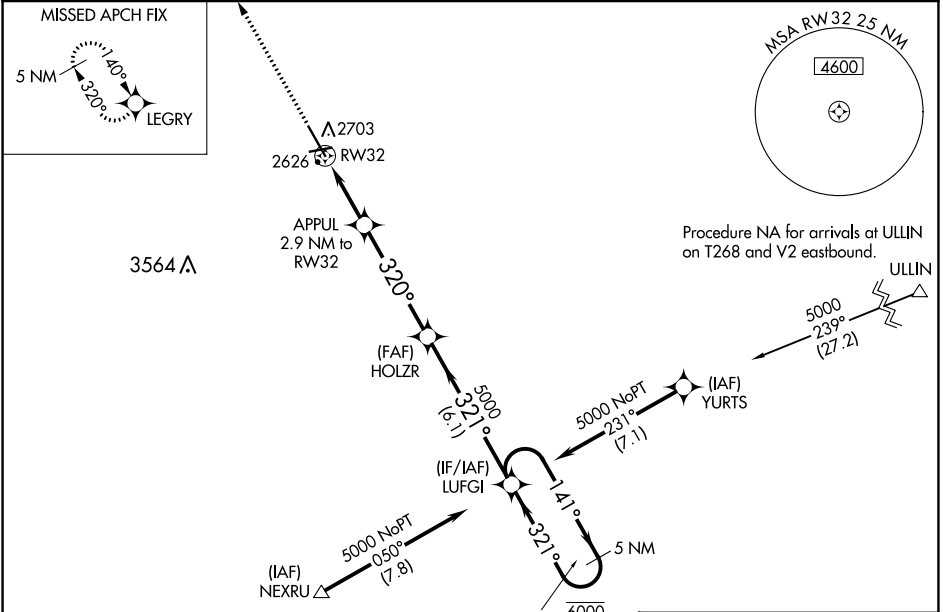
WAAS CH <b>50544</b> <b>W32A</b>	APP CRS <b>320°</b>	Rwy Idg TDZE <b>2587</b> Apt Elev <b>2592</b>	<b>7301</b>
--	------------------------	---	-------------

# RNAV (GPS) RWY 32

DICKINSON/THEODORE ROOSEVELT RGNL (DIK)

RNP APCH - GPS.	MALSR 	MISSED APPROACH: Climb to 4400 direct LEGRY and hold.
<p><b>⚠</b> For uncompensated Baro-VNAV systems, LNAV/VNAV NA below -24°C or above 54°C. For inop ALS, increase LNAV/VNAV all Cats visibility to 3/4 SM and LNAV Cat C/D visibility to 2/3 SM.</p>		

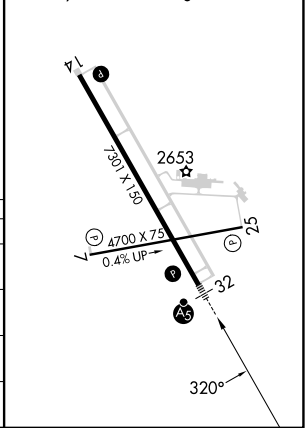
ASOS <b>118.375</b>	MINNEAPOLIS CENTER <b>124.25 236.825</b>	UNICOM <b>123.0 (CTAF)</b>
------------------------	---	-------------------------------



CATEGORY	A	B	C	D
LPV DA		2787-1/2	200 (200-1/2)	
LNAV/VNAV DA		2837-1/2	250 (300-1/2)	
LNAV MDA		2880-1/2	293 (300-1/2)	
CIRCLING	3060-1	468 (500-1)	3120-1/2 528 (600-1/2)	3200-2 608 (700-2)

ELEV 2592	<b>D</b>	TDZE 2587
-----------	----------	-----------

HIRL Rwy 14-32 **Ⓛ**  
 MIRL Rwy 7-25 **Ⓛ**  
 REIL Rws 7, 14 and 25 **Ⓛ**



NC-1, 26 DEC 2024 to 23 JAN 2025

NC-1, 26 DEC 2024 to 23 JAN 2025