

WAAS CH 93927 W17A	APP CRS 166°	Rwy Idg TDZE Apt Elev	6501 5202 5245
--	------------------------	-----------------------------	---

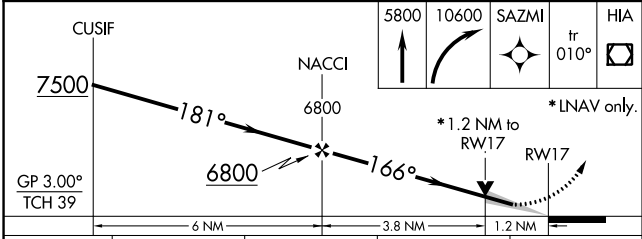
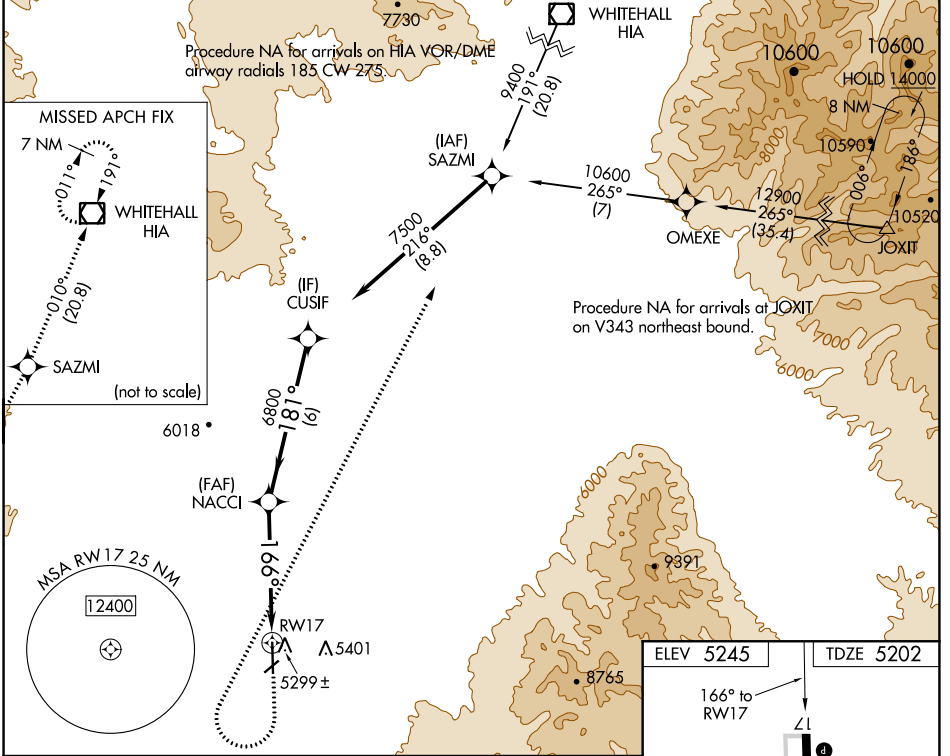
RNAV (GPS) RWY 17

DILLON (DLN)

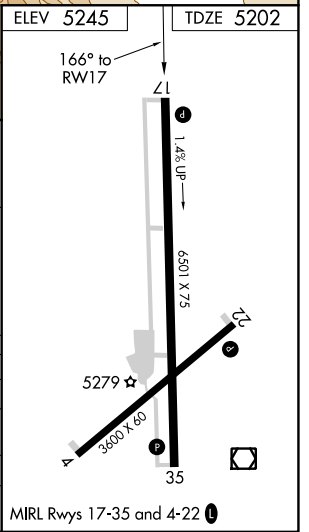
⚠ When local altimeter setting not received, procedure NA.
 DME/DME RNP-0.3 NA. For uncompensated Baro-VNAV systems,
 LNAV/VNAV NA below -27°C (-16°F) or above 51°C (124°F).
 Night Landing: Rwy 4, 22, 35 NA.

⚠ MISSED APPROACH: Climb to 5800 then climbing right turn to 10600 direct SAZMI and on track 010° to HIA VOR/DME and hold.

ASOS 135.225	SALT LAKE CENTER 132.4 338.3	UNICOM 122.8 (CTAF) 1
------------------------	--	---------------------------------



CATEGORY	A	B	C	D
LPV DA		5452-7/8	250 (200-7/8)	
LNAV/VNAV DA		5525-1 1/8	323 (300-1 1/8)	
LNAV MDA	5560-1	358 (400-1)	5560-1 1/8	358 (400-1 1/8)
CIRCLING	5760-1 515 (600-1)	5860-1 615 (700-1)	5980-2 735 (800-2)	6300-3 1055 (1100-3)



NW-1, 26 DEC 2024 to 23 JAN 2025

NW-1, 26 DEC 2024 to 23 JAN 2025