

# COPTER VOR RWY 36

DOTHAN RGNL (DHN)

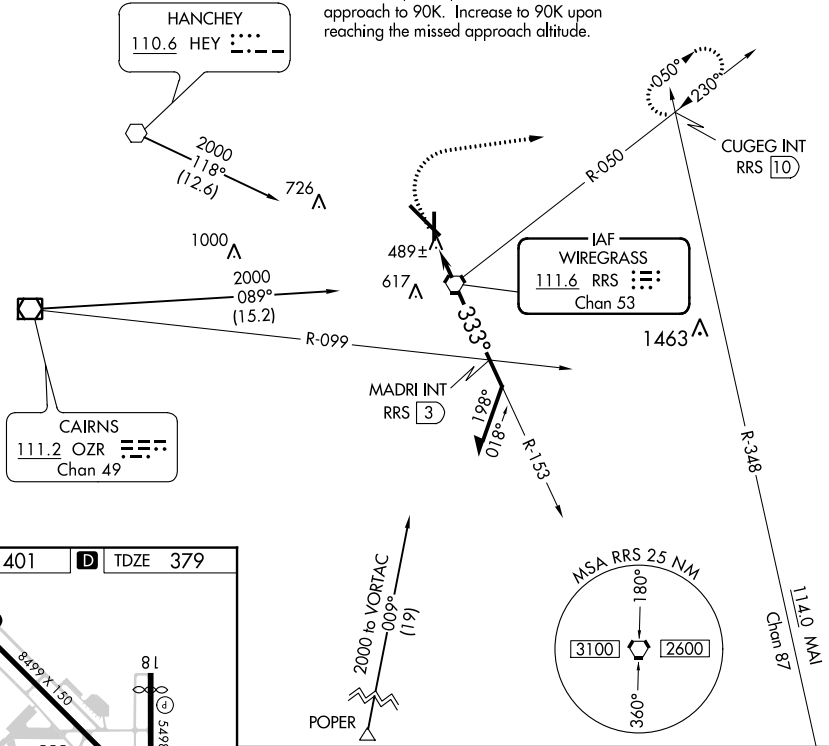
VORTAC RRS <b>111.6</b> Chan 53	APP CRS <b>333°</b>	Rwy Idg TDZE Apt Elev	<b>5000</b> <b>379</b> <b>401</b>
---------------------------------------	------------------------	-----------------------------	---

**▼** When local altimeter setting not received, use Cairns AAF (Fort Novosel) altimeter setting and increase all MDA 60 feet.

**MISSED APPROACH:** Climb to 900 then climbing right turn to 2000 on heading 080° and RRS VORTAC R-050 to CUGEG INT/RRS 10 DME and hold.

ATIS <b>135.725</b>	CAIRNS APP CON ★ <b>125.4 327.125</b>	DOTHAN TOWER ★ <b>118.4 (CTAF) 257.6</b>	GND CON <b>121.7 348.6</b>	UNICOM <b>122.95</b>
------------------------	--	---	-------------------------------	-------------------------

Limit final and missed approach to 70K.  
Limit feeder, initial, and intermediate approach to 90K. Increase to 90K upon reaching the missed approach altitude.



SE-4, 26 DEC 2024 to 23 JAN 2025

SE-4, 26 DEC 2024 to 23 JAN 2025

ELEV 401	<b>D</b>	TDZE 379
----------	----------	----------

REIL Rwy 18  
REIL Rwy 14  
HIRL Rwy 18-36  
HIRL Rwy 14-32

FAF to MAP 1.8 NM					
Knots	45	60	75	90	105
Min:Sec	2:24	1:48	1:26	1:12	1:02

900	2000	RRS R-050	CUGEG INT	RRS VORTAC	Remain within 5 NM
↑	hdg 080°				
1400		333°		153°	
1.8 NM		3 NM			
COPTER					
H-36		740-1 361 (400-1)			