

FORT BLISS, TEXAS

# ILS or LOC RWY 22

I-BIF LOC/DME <b>110.9</b> Chan <b>46</b>	APCH CRS <b>216°</b>	Rwy Idg <b>13,554</b> TDZE <b>3947</b> Arprt Elev <b>3947</b>
---	-------------------------	---

[USA]

BIGGS AAF (KBIF)

RADAR required when R-5103-A,B,C, R-5107K are active.	SSALR 	MISSED APPROACH: Climb to 4600, then climbing left turn to 9000 direct ELP VORTAC. Proceed outbound ELP R-040 to PIERS intersection and hold. Continue climb in hold to 9000.
---	-----------	---

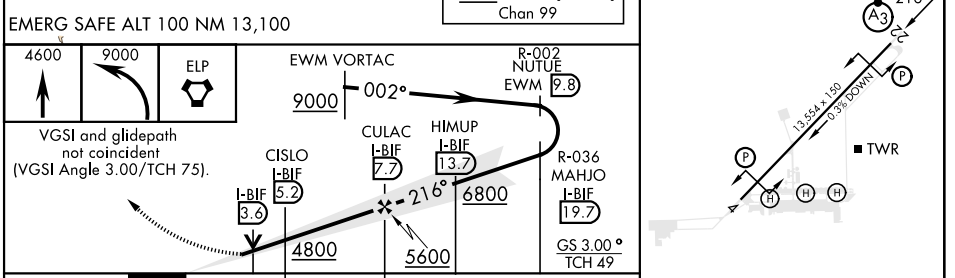
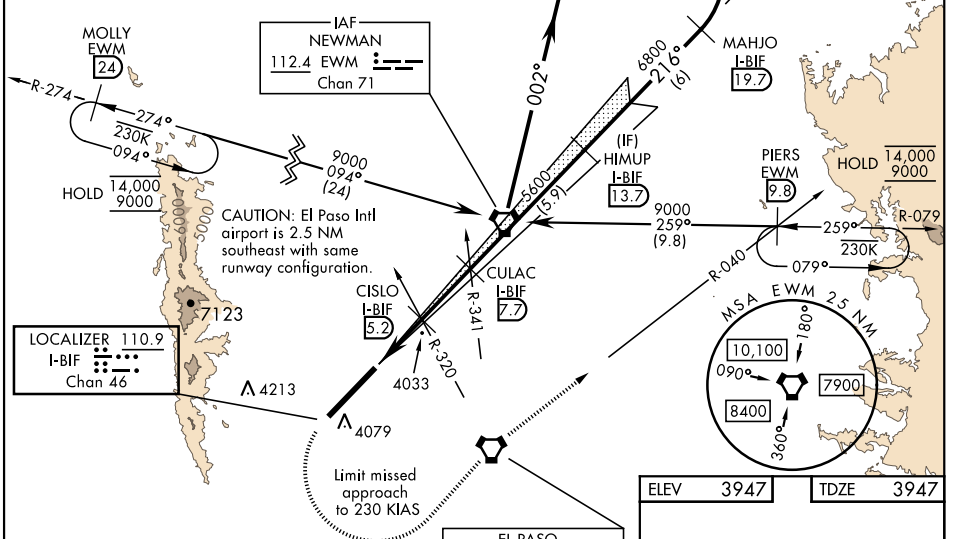
EL PASO ATIS <b>120.0 254.3</b>	EL PASO APP <b>119.15 353.5</b> (S of V16) <b>124.25 298.85</b> (N of V16)	TOWER <b>127.9 342.25</b>	GND CON <b>121.6 251.125</b>	EL PASO CLNC HDL <b>125.0 379.1</b>	ASR
------------------------------------	--	------------------------------	---------------------------------	--	-----

Arrivals expect RADAR vectors to final when restricted areas are active.

Procedure NA via V-94-611, T317 westbound without holding at MOLLY. ATC clearance required.

Procedure NA via V-560 eastbound without holding at PIERS. ATC clearance required.

Inop table does not apply.



ELEV	3947	TDZE	3947		
EL PASO	115.2 ELP	Chan	99		
EMERG SAFE ALT 100 NM	13,100				
Category	A	B	C	D	E
S-ILS 22		4147- $\frac{3}{4}$	200	(200- $\frac{3}{4}$ )	
S-LOC 22		4300-1	353	(400-1)	
CIRCLING*	4380-1	4400-1	4560-1 $\frac{3}{4}$	4560-2	4560-2 $\frac{1}{2}$
	433	453	613	613	613
	(500-1)	(500-1)	(700-1 $\frac{3}{4}$ )	(700-2)	(700-2 $\frac{1}{2}$ )
HIRL Rwy 04-22 REIL Rwy 04, 22					
FAF to MAP 5.0 NM					
Knots	60	90	120	150	180
Min:Sec	5:00	3:20	2:30	2:00	1:40

FORT BLISS, TEXAS 31° 51' N - 106° 23' W BIGGS AAF (KBIF)

Orig 25JAN24

# ILS or LOC RWY 22

SC-3, 26 DEC 2024 TO 23 JAN 2025

SC-3, 26 DEC 2024 TO 23 JAN 2025