

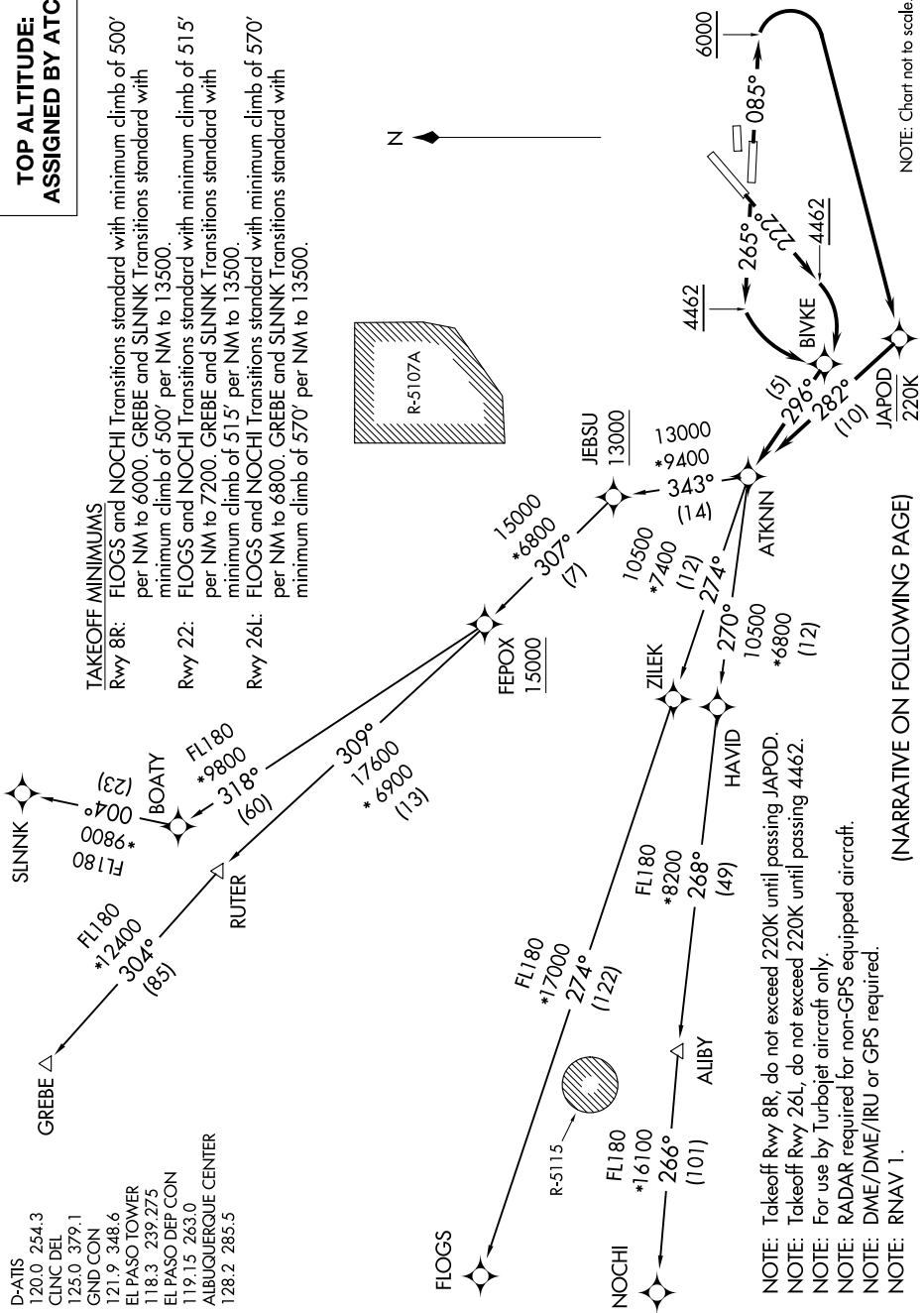
# ATKNN FIVE DEPARTURE (RNAV)

## TOP ALTITUDE: ASSIGNED BY ATC

D-ATIS 120.0 254.3  
 CLNC DEL 125.0 379.1  
 GND CON 121.9 348.6  
 EL PASO TOWER 118.3 239.275  
 EL PASO DEP CON 119.15 263.0  
 ALBUQUERQUE CENTER 128.2 285.5

### TAKEOFF MINIMUMS

Rwy 8R: FLOGS and NOCHI Transitions standard with minimum climb of 500' per NM to 6000. GREBE and SLINK Transitions standard with minimum climb of 500' per NM to 13500.  
 Rwy 22: FLOGS and NOCHI Transitions standard with minimum climb of 515' per NM to 7200. GREBE and SLINK Transitions standard with minimum climb of 515' per NM to 13500.  
 Rwy 26L: FLOGS and NOCHI Transitions standard with minimum climb of 570' per NM to 6800. GREBE and SLINK Transitions standard with minimum climb of 570' per NM to 13500.



NOTE: Takeoff Rwy 8R, do not exceed 220K until passing JAPOD.  
 NOTE: Takeoff Rwy 26L, do not exceed 220K until passing 4462.  
 NOTE: For use by Turbojet aircraft only.  
 NOTE: RADAR required for non-GPS equipped aircraft.  
 NOTE: DME/DME/IRU or GPS required.  
 NOTE: RNAV 1.

NOTE: Chart not to scale.

(NARRATIVE ON FOLLOWING PAGE)

# ATKNN FIVE DEPARTURE (RNAV)

(ATKNN5.ATKNN) 21JUL16