

LOC/DME I-ETF 111.5 Chan 52	APP CRS 042°	Rwy Idg 12020 TDZE 3923 Apt Elev 3962
---	------------------------	--

LOC/DME RWY 4

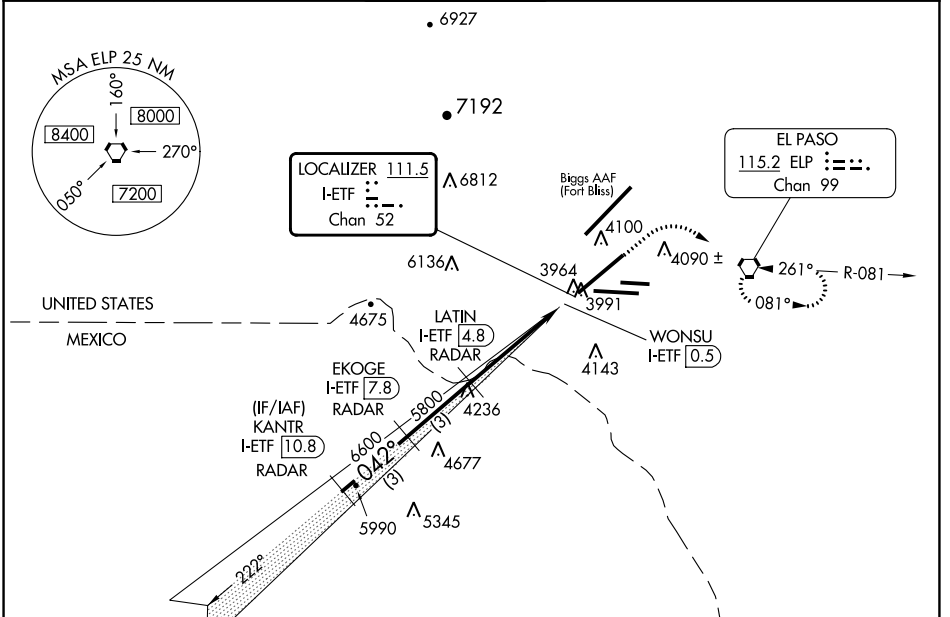
EL PASO INTL (ELP)

RADAR required for procedure entry.

ASR Circling NA for Cat D north of Rwy 26R and northwest of Rwy 4.

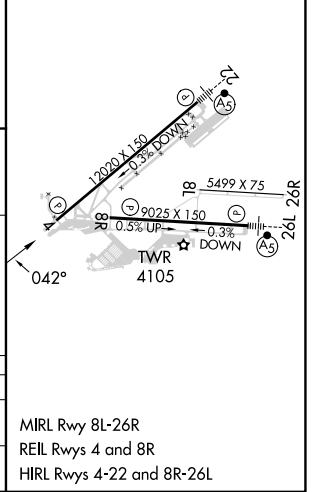
MISSED APPROACH: Climb to 4500 then climbing right turn to 6900 direct ELP VORTAC and hold, continue climb-in-hold to 6900.

D-ATIS 120.0 254.3	EL PASO APP CON 124.25 296.85	EL PASO TOWER 118.3 239.275	GND CON 121.9 348.6	CLNC DEL 125.0 379.1
------------------------------	---	---------------------------------------	-------------------------------	--------------------------------



ELEV 3962	D TDZE 3923
-----------	--------------------

	KANTR I-ETF [10.8] RADAR	EKOGE I-ETF [7.8] RADAR	LATIN I-ETF [4.8] RADAR	WONSU I-ETF [0.5]	ELP
7500	6600	5800	4500	6900	ELP
VGS1 and descent angles not coincident (VGS1 Angle 3.00/TCH 55). Disregard GS indications.					
3 NM		3 NM		4.3 NM	
CATEGORY	A	B	C	D	
S-4	4300/50 377 (400-1)		4300/60 377 (400-1¼)		
C CIRCLING	4420-1 458 (500-1)	4460-1 498 (500-1)	4480-1½ 518 (600-1½)	4680-2¼ 718 (800-2¼)	



SC-3, 26 DEC 2024 to 23 JAN 2025

SC-3, 26 DEC 2024 to 23 JAN 2025