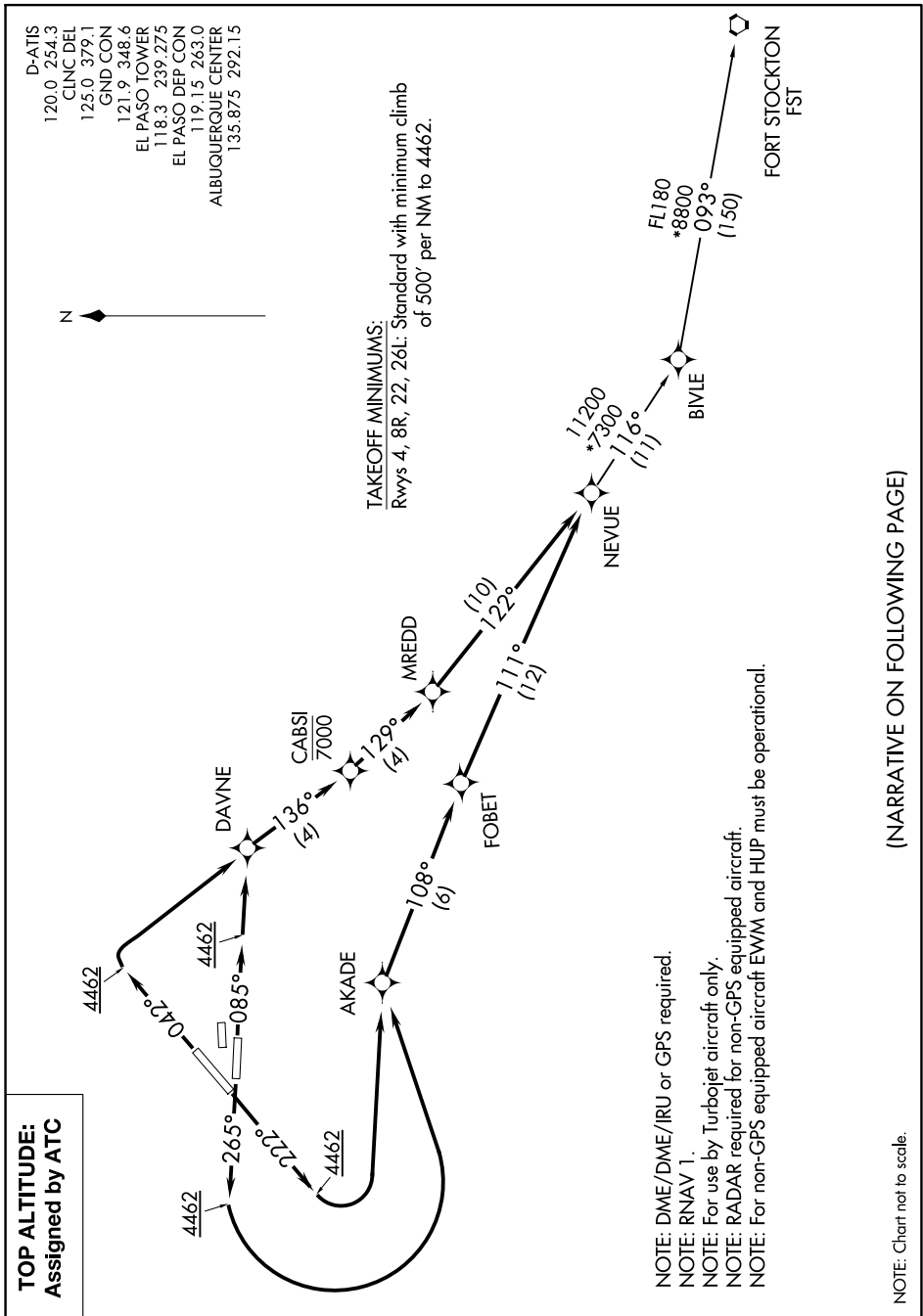


NEVUE THREE DEPARTURE(RNAV)



SC-3, 26 DEC 2024 to 23 JAN 2025

TOP ALTITUDE:
Assigned by ATC

TAKEOFF MINIMUMS:
Rwys 4, 8R, 22, 26L: Standard with minimum climb of 500' per NM to 4462.

- NOTE: DME/DME/IRU or GPS required.
- NOTE: RNAV 1.
- NOTE: For use by Turbojet aircraft only.
- NOTE: RADAR required for non-GPS equipped aircraft.
- NOTE: For non-GPS equipped aircraft EWM and HUP must be operational.

NOTE: Chart not to scale.

(NARRATIVE ON FOLLOWING PAGE)

SC-3, 26 DEC 2024 to 23 JAN 2025

NEVUE THREE DEPARTURE(RNAV)