

ENID, OKLAHOMA

ILS or LOC RWY 17R

VANCE AFB (KEND)

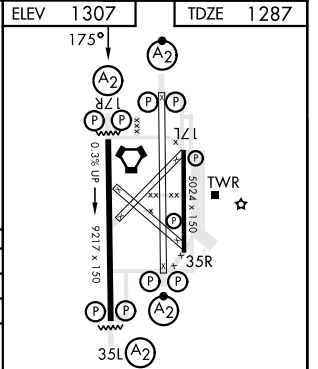
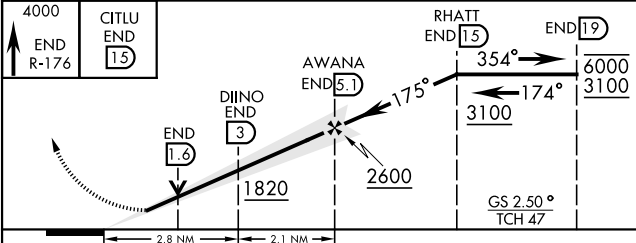
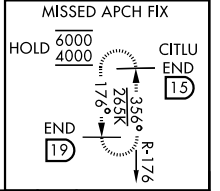
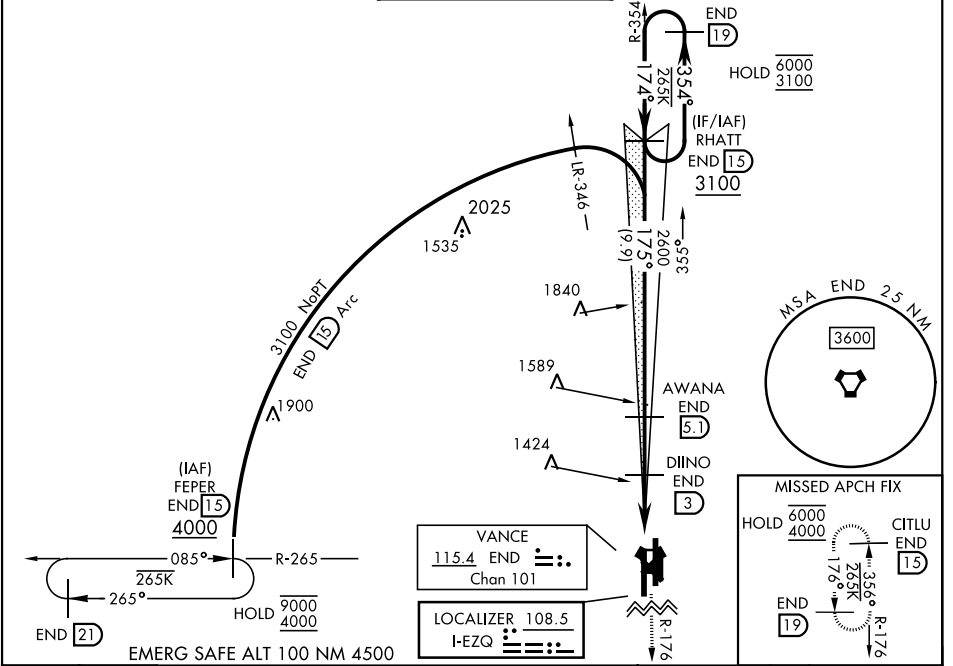
LOC I-EZQ 108.5	APCH CRS 175°	Rwy Idg TDZE Arprt Elev 9217 1287 1307
---------------------------	-------------------------	--

[USAF]

▼ *When ALS inop, increase CAT AB vis to 1 mile; CAT CDE vis to 1½ miles.
 **When ALS inop, increase CAT AB vis to 1 mile; CAT CDE vis to 1½ miles.

SALS MISSED APPROACH: Climb to 4000, intercept END VORTAC R-176 to CITLU end hold.

ATIS ★ 115.4 263.15	APP CON 125.45 388.2 (E) 126.75 346.325 (W)	TOWER ★ 124.05 259.1	GND CON 121.675 289.4	CLNC DEL 225.4
-------------------------------	---	--------------------------------	---------------------------------	--------------------------



4000 END R-176 CITLU END 15	RHATT END 15	AWANA END 5.1	DIINO END 3	END 19	ELEV 1307	TDZE 1287
2.8 NM		2.1 NM				
CATEGORY	A	B	C	D	E	
S-ILS 17R	1487-¾		200	(200-¾)		
S-LOC 17R*	1680-¾ 393 (400-¾)		1680-⅞ 393 (400-⅞)			
CIRCLING	1760-1	1800-1½	1900-2	1940-2¼		
	453 (500-1)	493 (500-1½)	593 (600-2)	633 (700-2¼)		
LOCAL ALTIMETER, WITHOUT LAST STEPDOWN FIX						
S-LOC 17R**	1820-¾ 533 (600-¾)		1820-1¼ 533 (600-1¼)			
CIRCLING	1820-1	1820-1½	1900-2	1940-2¼		
	513 (600-1)	513 (600-1½)	593 (600-2)	633 (700-2¼)		

HIRL Rwy 17C-35C, 17R-35L					
MIRL Rwy 17L-35R					
REIL Rwy 17L, 35R					
FAF to MAP 4.8 NM					
Knots	60	90	120	150	180
Min:Sec	4:48	3:12	2:24	1:55	1:36

ENID, OKLAHOMA
Orig 30NOV23

36° 20'N-97° 55'W

VANCE AFB (KEND)

ILS or LOC RWY 17R

SC-1, 26 DEC 2024 to 23 JAN 2025

SC-1, 26 DEC 2024 to 23 JAN 2025