

ENID, OKLAHOMA

# ILS or LOC RWY 35C

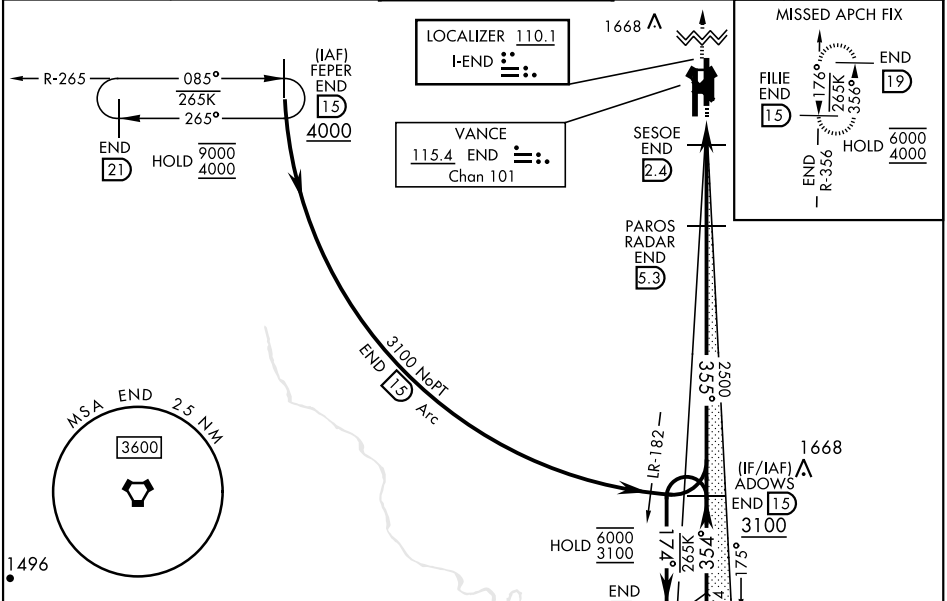
VANCE AFB (KEND)

LOC I-END <b>110.1</b>	APCH CRS <b>355°</b>	Rwy Idg TDZE Arprt Elev <b>9217</b> <b>1293</b> <b>1307</b>
---------------------------	-------------------------	--

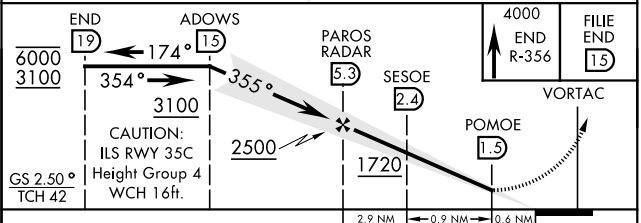
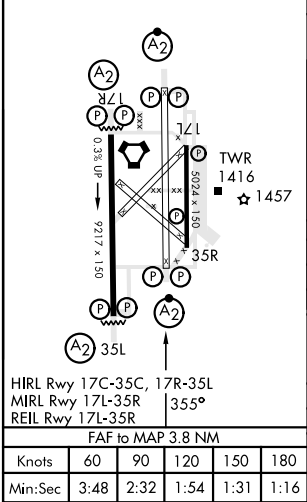
AL-135 [USAF]

RADAR or DME required. 	SALSF 	MISSED APPROACH: Climb to 4000, intercept END VORTAC R-356 to FILE and hold.
----------------------------	-----------	--

ATIS ★ <b>115.4 263.15</b>	APP CON <b>125.45 388.2 EAST</b> <b>126.75 346.325 WEST</b>	TOWER ★ <b>124.05 259.1</b>	GND CON <b>121.675 289.4</b>	CLNC DEL <b>225.4</b>
-------------------------------	---	--------------------------------	---------------------------------	--------------------------



EMERG SAFE ALT 100 NM 4500  
ELEV 1307 TDZE 1293



CATEGORY	A	B	C	D	E
S-ILS 35C	1493/40		200	(200-¾)	
S-LOC 35C*	1640/40		347	(400-¾)	
CIRCLING	1760-1 453 (500-1)	1800-1½ 493 (500-1½)	1900-2 593 (600-2)	2300-3 993 (1000-3)	
WITHOUT SESOE FIX MINIMUMS					
S-LOC 35C**	1720/40 427 (500-¾)		1720/50 427 (500-1)		
CIRCLING	1760-1 453 (500-1)	1800-1½ 493 (500-1½)	1900-2 593 (600-2)	2300-3 993 (1000-3)	

ENID, OKLAHOMA  
Amdt 2 24MAR22

36°20'N-97°55'W

VANCE AFB (KEND)

# ILS or LOC RWY 35C

SC-1, 26 DEC 2024 to 23 JAN 2025

SC-1, 26 DEC 2024 to 23 JAN 2025