

ENID, OKLAHOMA

# VOR/DME RWY 35R

VORTAC END <b>115.4</b> Chan <b>101</b>	APCH CRS <b>342°</b>	Rwy Idg TDZE <b>1284</b> Arprt Elev <b>1307</b>
---	-------------------------	---

AL-135 [USAF]

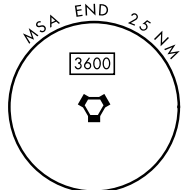
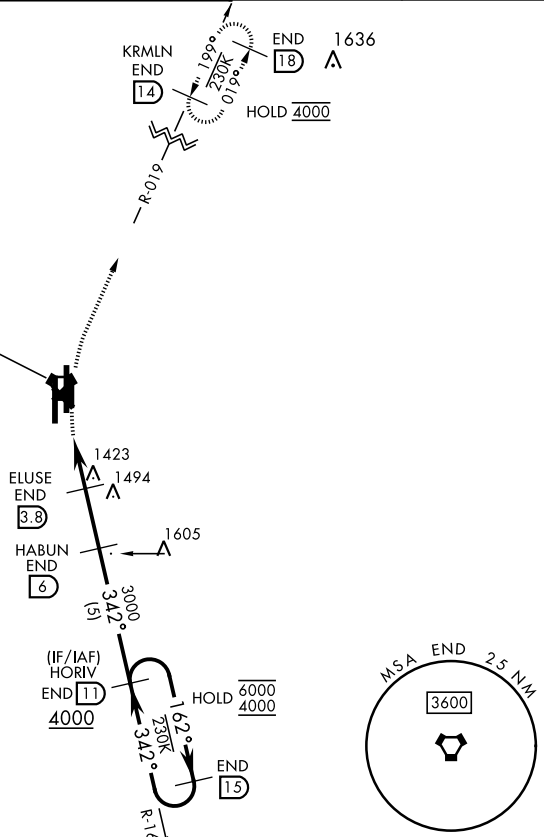
VANCE AFB (KEND)

<p>Visibility reduction by helicopters NA.</p>	<p>MISSED APPROACH: Climbing right turn to 4000 on heading 005°, intercept END VORTAC R-019 to KRMLN and hold.</p>
--	--

<p>ATIS ★ <b>115.4 263.15</b></p>	<p>APP CON <b>125.45 388.2 EAST</b> <b>126.75 346.325 WEST</b></p>	<p>TOWER ★ <b>124.05 259.1</b></p>	<p>GND CON <b>121.675 289.4</b></p>	<p>CLNC DEL <b>225.4</b></p>
---------------------------------------	--	--	---	----------------------------------

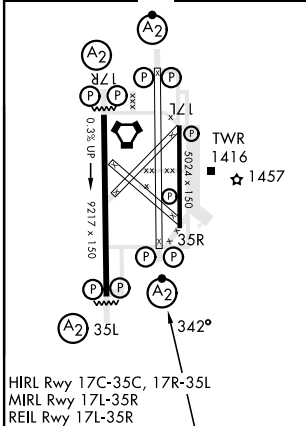
## FOR USE BY 71 FTW ACFT ONLY

VANCE  
115.4 END ≡:.  
Chan 101

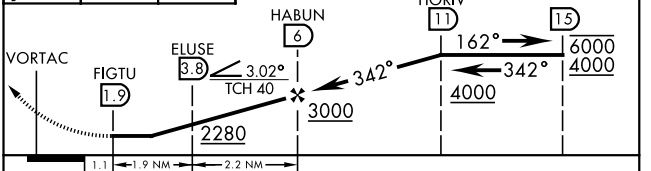


EMERG SAFE ALT 100 NM 4500

ELEV 1307	TDZE 1284
-----------	-----------



4000	↑ END R-019	KRMLN END (14)	VGSI and descent angles not coincident (VGSI Angle 3.00/TCH 50).
------	-------------	----------------	--



CATEGORY	A	B	C	D
S-35R	1720-1 $\frac{3}{8}$	436 (500-1 $\frac{3}{8}$ )		NA
CIRCLING	1760-1 $\frac{3}{8}$	453 (500-1 $\frac{3}{8}$ )		NA

ENID, OKLAHOMA

36°20'N-97°55'W

VANCE AFB (KEND)

Orig 24MAR22

# VOR/DME RWY 35R

SC-1, 26 DEC 2024 to 23 JAN 2025

SC-1, 26 DEC 2024 to 23 JAN 2025