

ENID, OKLAHOMA

VOR/DME or TACAN RWY 35C

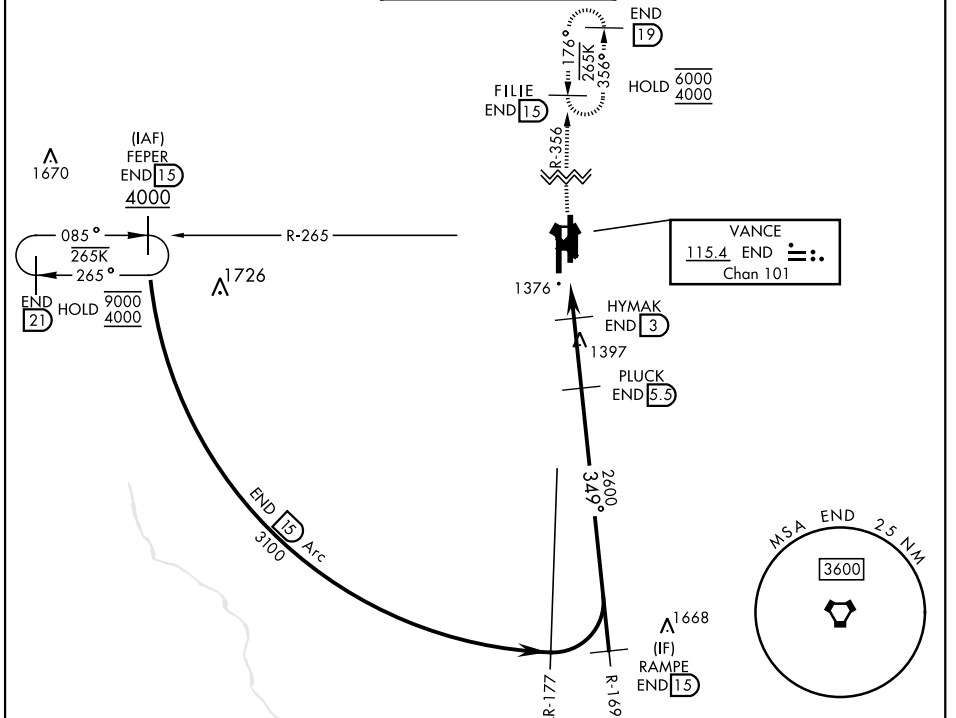
VORTAC END 115.4 Chan 101	APCH CRS 349°	Rwy Idg 9217 TDZE 1293 Arprt Elev 1307
---	-------------------------	---

AL-135 [USAF]

VANCE AFB (KEND)

▽ * When ALS inop, increase RVR to 55, vis to 1 mile.	SALSF A2	MISSED APPROACH: Climb to 4000, intercept END VORTAC R-356 to FILIE and hold.
--	--------------------	--

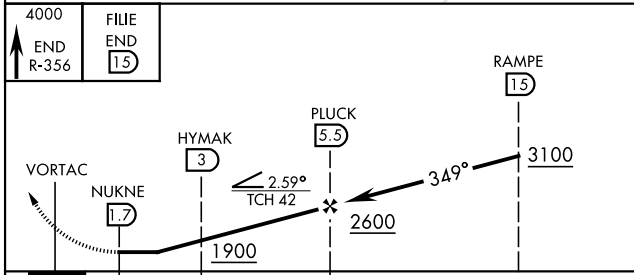
ATIS ★ 115.4 263.15	APP CON 125.45 388.2 EAST 126.75 346.325 WEST	TOWER ★ 124.05 259.1	GND CON 121.675 289.4	CLNC DEL 225.4
-------------------------------	---	--------------------------------	---------------------------------	--------------------------



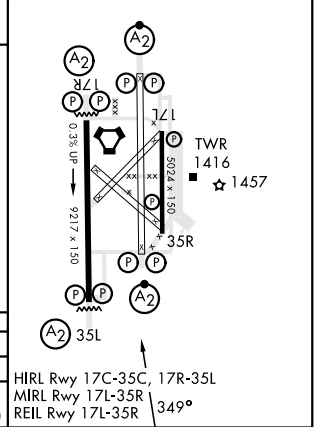
SC-1, 26 DEC 2024 to 23 JAN 2025

SC-1, 26 DEC 2024 to 23 JAN 2025

EMERG SAFE ALT 100 NM 4500



ELEV 1307	TDZE 1293
-----------	-----------



CATEGORY	A	B	C	D	E
S-35C *	1660/40		367	(400-34)	
C CIRCLING	1760-1	453 (500-1)	1800-1½ 493 (500-1½)	1900-2 593 (600-2)	2300-3 993 (1000-3)

ENID, OKLAHOMA
Amdt 5 24FEB22

36°20'N-97°55'W

VANCE AFB (KEND)

VOR/DME or TACAN RWY 35C