

ENID, OKLAHOMA

VOR/DME or TACAN RWY 35L

VORTAC END 115.4 Chan 101	APCH CRS 003°	Rwy Idg 9217 TDZE 1307 Arprt Elev 1307
---	-------------------------	---

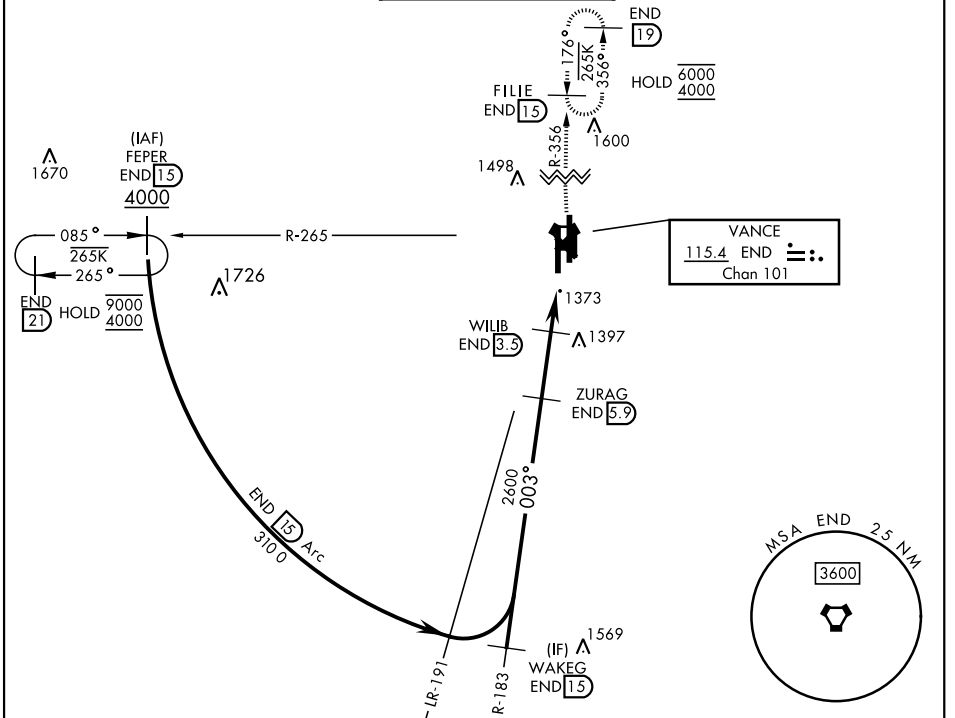
AL-135 [USAF]

VANCE AFB (KEND)

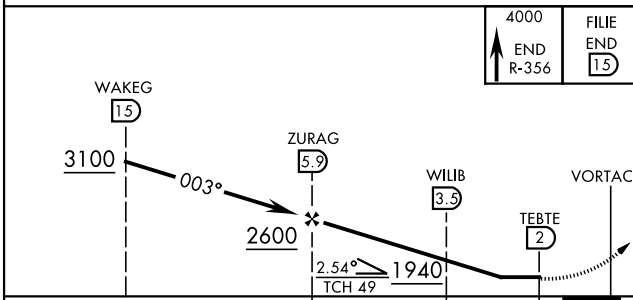
* When ALS inop, increase vis to 1 mile.

SALS (A2)	MISSED APPROACH: Climb to 4000, intercept END VORTAC R-356 to FILIE and hold.
---------------------	---

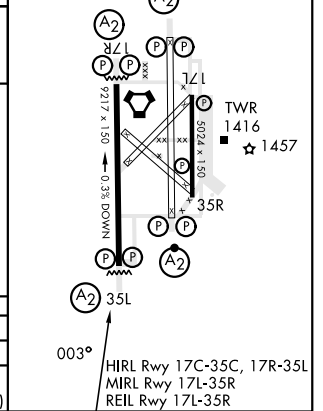
ATIS ★ 115.4 263.15	APP CON 125.45 388.2 EAST 126.75 346.325 WEST	TOWER ★ 124.05 259.1	GND CON 121.675 289.4	CLNC DEL 225.4
-------------------------------	---	--------------------------------	---------------------------------	--------------------------



EMERG SAFE ALT 100 NM 4500



ELEV 1307	TDZE 1307
-----------	-----------



CATEGORY	A	B	C	D	E
S-35L*	1640-¾		333	(400-¾)	
C CIRCLING	1760-1	453 (500-1)	1800-1½ 493 (500-1½)	1900-2 593 (600-2)	2300-3 993 (1000-3)

ENID, OKLAHOMA

36° 20' N-97° 55' W

VANCE AFB (KEND)

Amdt 5 24FEB22

VOR/DME or TACAN RWY 35L