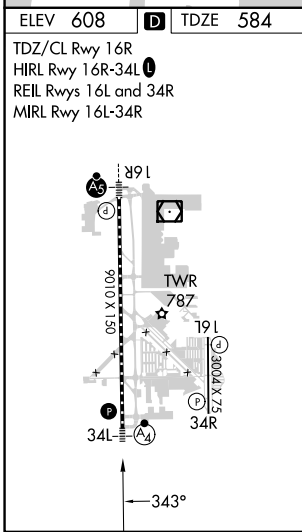
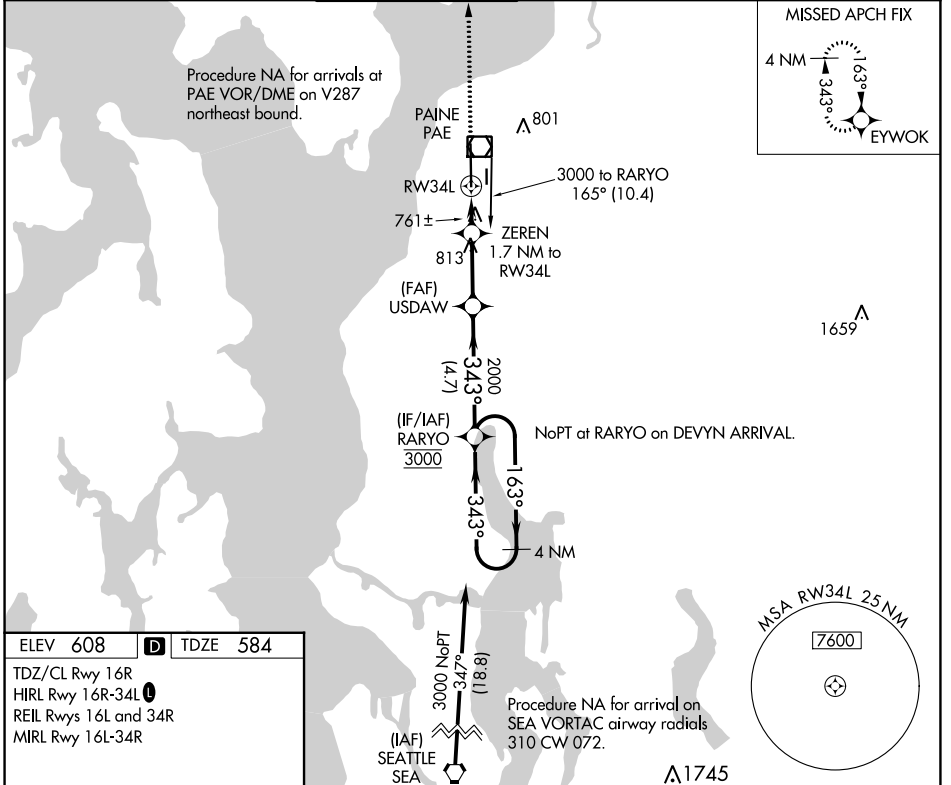


APP CRS	Rwy Idg	9010
343°	TDZE	584
	Apt Elev	608

RNAV (GPS) RWY 34L

SEATTLE PAINE FLD INTL (P.A.E.)

<p>▼ Circling Rwy 34R NA at night. Rwy 34L helicopter visibility reduction below 3/4 SM NA. DME/DME RNP-0.3 NA.</p>		<p>MALSF</p>	<p>MISSED APPROACH: Climb to 3000 direct EYWOK and hold.</p>		
<p>ATIS</p> <p>128.65</p>	<p>SEATTLE APP CON</p> <p>128.5 306.9</p>	<p>PAINE TOWER *</p> <p>132.95 (CTAF) 0 256.7</p>	<p>GND CON</p> <p>121.8 339.8</p>	<p>CLNC DEL</p> <p>127.175</p>	<p>UNICOM</p> <p>122.95</p>



3000 EYWOK VGSI and descent angles not coincident (VGSI Angle 3.00/TCH 75).

RARYO 4 NM Holding Pattern

ZEREN 1.7 NM to RW34L

USDAW

RW34L 1.2 NM to RW34L

1160 2000 3000

163° 343°

1.2 NM 0.5 NM 2.6 NM 4.7 NM

CATEGORY	A	B	C	D
LNAV MDA	1020-3/4 436 (500-3/4)		1020-1 436 (500-1)	
C CIRCLING	1100-1 492 (500-1)		1120-1 1/2 512 (600-1 1/2)	1160-2 552 (600-2)

NW-1, 26 DEC 2024 to 23 JAN 2025

NW-1, 26 DEC 2024 to 23 JAN 2025