

TACAN Y RWY 13R

TACAN NFL Chan 82	APCH CRS 141°	Rwy Idg 14,001 TDZE 3935 Arprt Elev 3935	AL-143 [USN]	FALLON NAS (VAN VOORHIS FLD) (KNFL)
-----------------------------	-------------------------	---	--------------	-------------------------------------

MISSED APPROACH: Climb direct NFL TACAN, then climbing left turn to 10,500. Intercept NFL R-117 outbound and hold. Continue climb-in-hold to 10,500.

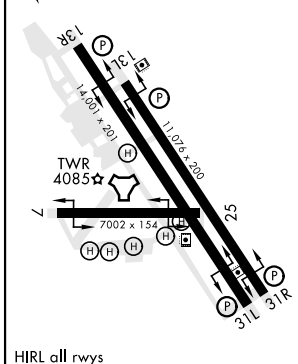
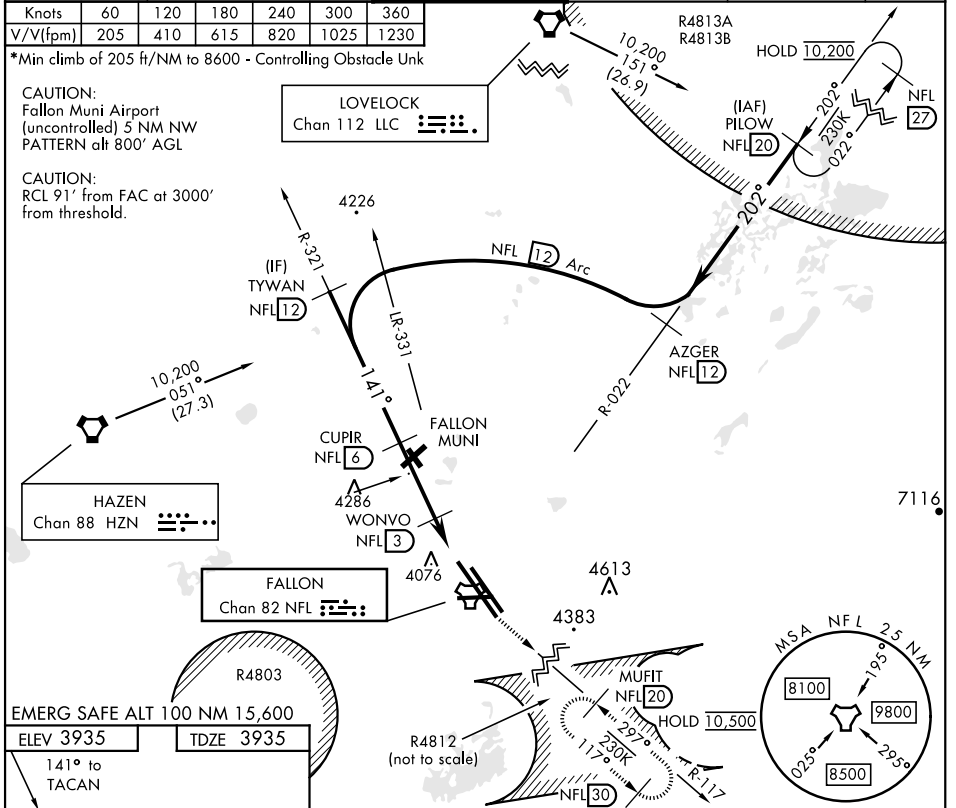
ATIS ★ 370.925	NAVY FALLON APP CON 120.85 360.2	NAVY FALLON TOWER★ 119.25 340.2	GND CON 251.15	CLNC DEL 353.55	ASR/PAR
--------------------------	--	---	--------------------------	---------------------------	---------

Knots	60	120	180	240	300	360
V/V(fpm)	205	410	615	820	1025	1230

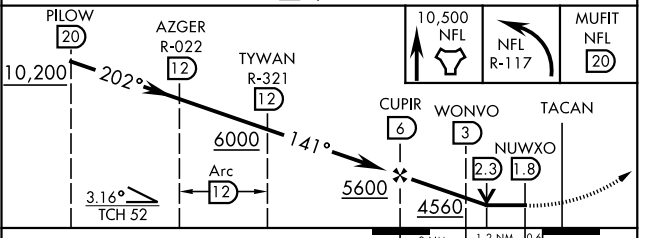
*Min climb of 205 ft/NM to 8600 - Controlling Obstacle Unk

CAUTION:
Fallon Muni Airport
(uncontrolled) 5 NM NW
PATTERN alt 800' AGL

CAUTION:
RCL 91' from FAC at 3000'
from threshold.



FALLON, NEVADA
Amdt 3 19MAY22



CATEGORY	A	B	C	D
S-13R *	4340-1	405 (500-1)	4340-1 1/8	405 (500-1 1/8)
S-13R	4440-1	505 (600-1)	4440-1 1/8	505 (600-1 1/8)
CIRCLING	4400-1	465 (500-1)	4700-2 1/4 765 (800-2 1/4)	4920-3 985 (1000-3)

39°25'N-118°42'W FALLON NAS (VAN VOORHIS FLD) (KNFL)

TACAN Y RWY 13R

SW-4, 26 DEC 2024 to 23 JAN 2025

SW-4, 26 DEC 2024 to 23 JAN 2025