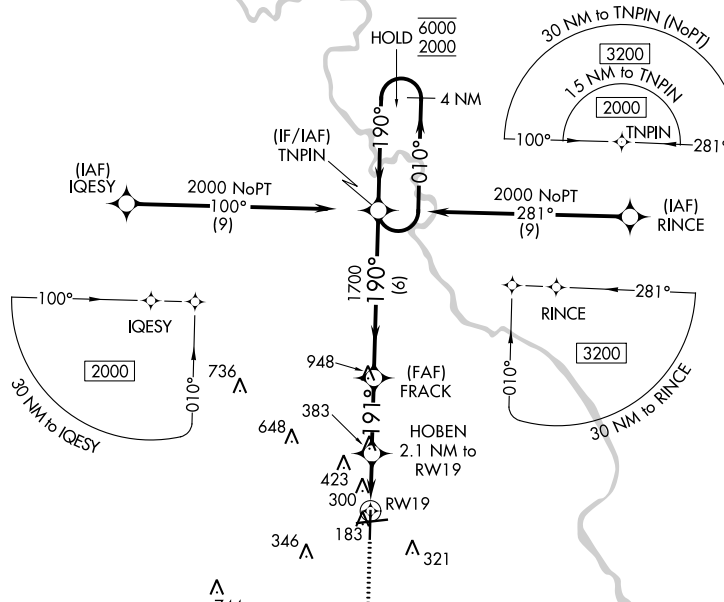


APP CRS	Rwy Idg	6000
191°	TDZE	144
	Apt Elev	147

RNAV (GPS) RWY 19

FLORENCE RGNL (FLO)

RNP APCH - GPS.		MISSED APPROACH: Climb to 2000 direct PAILS and on track 188° to NUTAL and hold.			
⚠	Rwy 19 helicopter visibility reduction below 1 SM NA. Straight-in Rwy 19 NA at night, Circling Rwy 1, 19 NA at night.				
ATIS	FLORENCE APP CON★	FLORENCE TOWER★	GND CON	CLNC DEL	UNICOM
123.625	118.6 341.7 <small>(256°-074°)</small> 135.25 316.15 <small>(075°-255°)</small>	125.1 (CTAF) 353.85	121.9 353.85	121.9 353.85	122.95



ELEV 147	TDZE 144
191°	

TWR 253
245
6L
6R
0.4% UP
6502 X 150
0.5% UP
6000 X 150
1

MIRL Rwy 1-19
REIL Rwys 1, 19 and 27
HIRL Rwy 9-27

MISSED APCH FIX

NUTAL

NUTAL 188°
188°
4 NM

2000	PAILS	NUTAL	VGSI and descent angles not coincident (VGSI Angle 3.00/TCH 32).
↑	◆	△	
	tr 188°		4 NM Holding Pattern

FRACK
HOBEN 2.1 NM to RWY 19
RWY 19
840
1700
190°
190°
010°
6000
2000

CATEGORY	A	B	C	D
LNAV MDA	560-1	416 (500-1)	560-1 ¹ / ₈	416 (500-1 ¹ / ₈)
CIRCLING	640-1 493 (500-1)	660-1 513 (600-1)	900-2 ¹ / ₄ 753 (800-2 ¹ / ₄)	900-2 ¹ / ₂ 753 (800-2 ¹ / ₂)

SE-2, 26 DEC 2024 to 23 JAN 2025

SE-2, 26 DEC 2024 to 23 JAN 2025