

RNAV (GPS) RWY 15

APCH CRS	Rwy Idg	4853
151°	TDZE	754
	Arprt Elev	754

AL-151 [USA]

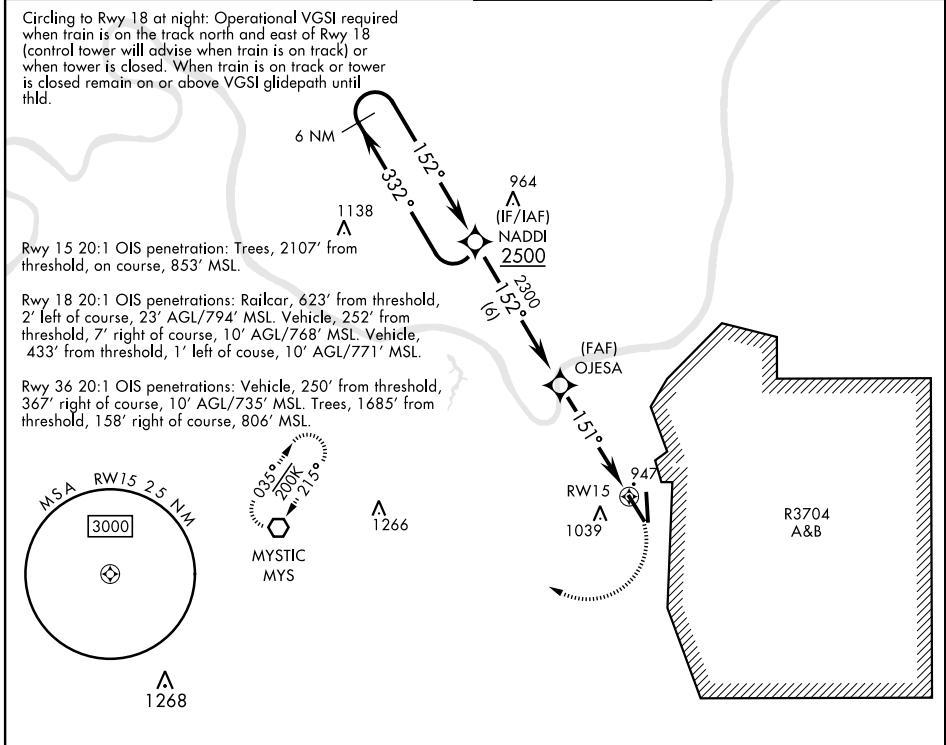
GODMAN AAF (KFTK)

RNP APCH - GPS

▼ *Straight-in minimums NA at night. Helicopter visibility reduction below 1 mile NA.
 ** Circling not authorized E of Rwy 18-36. When circling to Rwy 36 at night, operational VGSI required, remain on or above VGSI glidepath until threshold.

MISSED APPROACH: Climbing right turn to 3000 direct MYS VOR and hold.

ATIS 109.6	LOUISVILLE APP CON 132.075 327.0	TOWER★ 133.35 (CTAF) 0	GND CON 121.9 239.3
----------------------	--	----------------------------------	-------------------------------



SE-1, 26 DEC 2024 to 23 JAN 2025

SE-1, 26 DEC 2024 to 23 JAN 2025

ELEV 754		TDZE 754	
6 NM Holding Pattern		MYS	
2500 332°		151°	
152°		1.3 NM to RWY 15	
2300		3.00° TCH 45	
OJESA		4.7 NM	
RWY 15		81 5184 x 150	
RWY 15		0.55 UP	
RWY 15		0.55 DOWN	
RWY 15		33 36	
RWY 15		TWR 830	
RWY 15		HIRL Rwy 18-36	
RWY 15		MIRL Rwy 15-33	
RWY 15		REIL Rwy 15	
RWY 15		REIL Rwy 18	

RNAV (GPS) RWY 15