

APCH CRS	Rwy Idg	5184
180°	TDZE	754
	Arprt Elev	754

[USA]

GODMAN AAF (KFKT)

RNP APCH - GPS

▼ *Circling not authorized E of Rwy 18-36. When circling to Rwy 36 at night, operational VGSi required, remain on or above VGSi glidepath until thld. Circling to Rwy 15 not authorized at night.



MISSED APPROACH: Climbing right to 2600, direct to NADDI and hold.

ATIS 109.6	LOUISVILLE APP CON 132.075 327.0	TOWER ★ 133.35 (CTAF) 0	GND CON 121.9 239.3
----------------------	--	--	-------------------------------

Helicopter visibility reduction below 1 SM NA.

Procedure NA for arrivals at MAIZE via V171 NW bound.

(IAF) MAIZE 1020

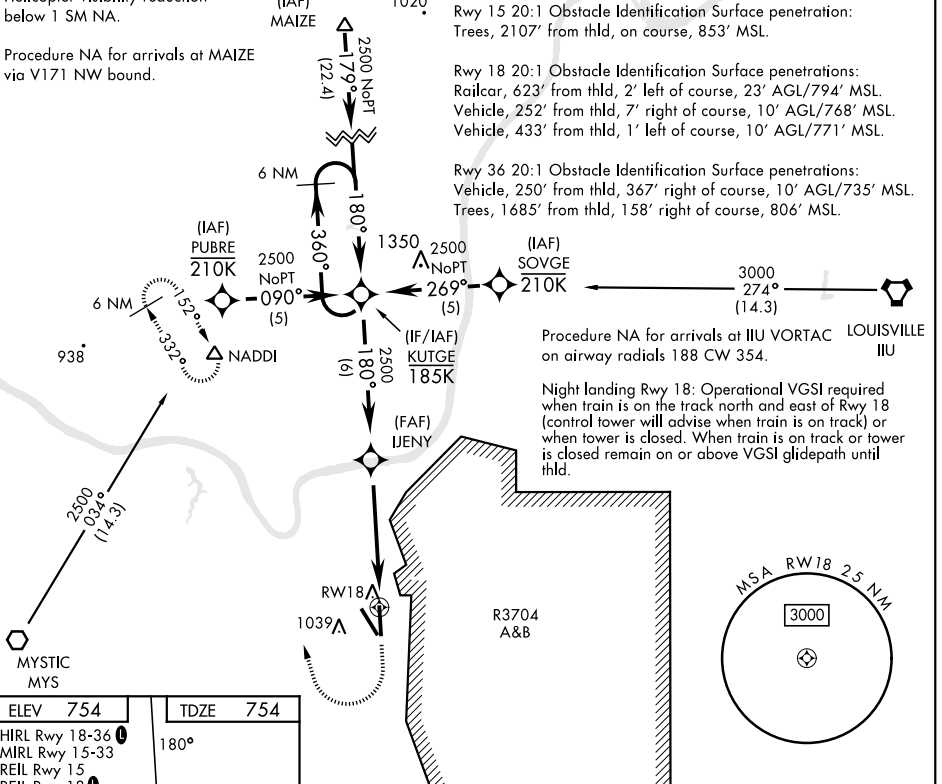
Rwy 15 20:1 Obstacle Identification Surface penetration: Trees, 2107' from thld, on course, 853' MSL.

Rwy 18 20:1 Obstacle Identification Surface penetrations: Railcar, 623' from thld, 2' left of course, 23' AGL/794' MSL. Vehicle, 252' from thld, 7' right of course, 10' AGL/768' MSL. Vehicle, 433' from thld, 1' left of course, 10' AGL/771' MSL.

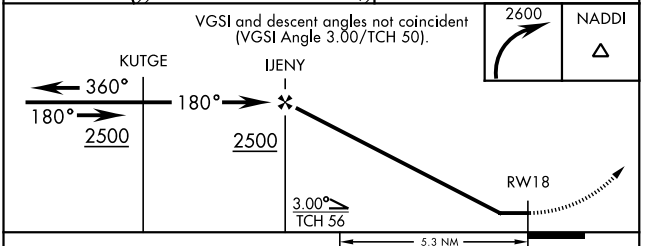
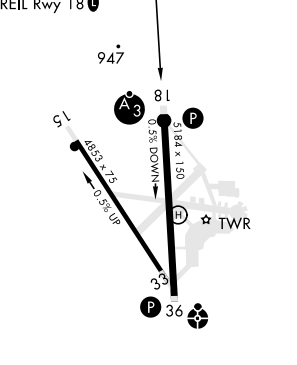
Rwy 36 20:1 Obstacle Identification Surface penetrations: Vehicle, 250' from thld, 367' right of course, 10' AGL/735' MSL. Trees, 1685' from thld, 158' right of course, 806' MSL.

SE-1, 26 DEC 2024 to 23 JAN 2025

SE-1, 26 DEC 2024 to 23 JAN 2025



ELEV	754	TDZE	754
HIRL Rwy 18-36	180°		
MIRL Rwy 15-33			
REIL Rwy 15			
REIL Rwy 18			



CATEGORY	A	B	C	D
LNAV MDA	1260-1	506 (600-1)	1260-1½ 506 (600-1½)	1260-1½ 506 (600-1½)
CIRCLING*	1340-1	586 (600-1)	1340-1½ 586 (600-1½)	1340-2 586 (600-2)