

VOR/DME RWY 18

VOR/DME FTK 109.6 Chan 33	APCH CRS 186°	Rwy ldg TDZE 5184 Arprt Elev 754
-----------------------------------------------	-------------------------	---------------------------------------------------------

AL-151 [USA]

GODMAN AAF (KF TK)

<p>▼ * Visibility reduction by helicopters NA.</p>		<p>SSALR A3</p>	<p>MISSED APPROACH: Climb to 1300, then climbing right turn to 2600 on heading 036° and FTK VOR/DME R-006 to BETHY INT/FTK 10.2 DME and hold.</p>
<p>ATIS 109.6</p>	<p>LOUISVILLE APP CON 132.075 327.0</p>	<p>TOWER* 133.35 (CTAF) 0</p>	<p>GND CON 121.9 239.3</p>

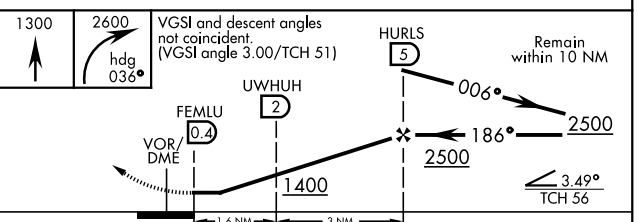
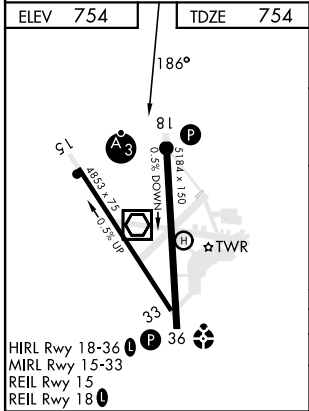
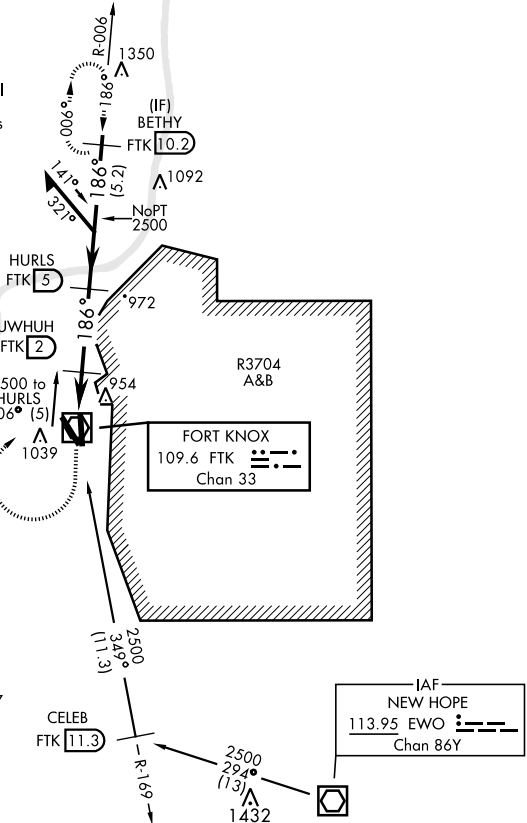
**Circling NA E of Rwy 18-36. When circling to Rwy 36 at night, operational VGS1 required, remain on or above VGS1 glidepath until threshold. Circling to Rwy 15 NA at night.

Straight-in operations to Rwy 18 at night: Operational VGS1 required when train is on the track North and East of Rwy 18 (control tower will advise when train is on track) or when tower is closed. When train is on track or tower is closed, remain on or above VGS1 glidepath until thld.

Rwy 15 20:1 OIS penetration: Trees, 2107' from threshold, on course, 853' MSL.

Rwy 18 20:1 OIS penetrations: Railcar, 623' from threshold, 2' left of course, 23' AGL/794' MSL. Vehicle, 252' from threshold, 7' right of course, 10' AGL/768' MSL. Vehicle, 433' from threshold, 1' left of course, 10' AGL/771' MSL.

Rwy 36 20:1 OIS penetrations: Vehicle, 250' from threshold, 367' right of course, 10' AGL/735' MSL. Trees, 1685' from threshold, 158' right of course, 806' MSL.



CATEGORY	A	B	C	D
S-18 *	1240-1	486 (500-1)	1240-1½	486 (500-1½)
CIRCLING **	1340-1	586 (600-1)	1340-1½	586 (600-1½)
			586 (600-1½)	586 (600-2)

VOR/DME RWY 18

SE-1, 26 DEC 2024 to 23 JAN 2025

SE-1, 26 DEC 2024 to 23 JAN 2025