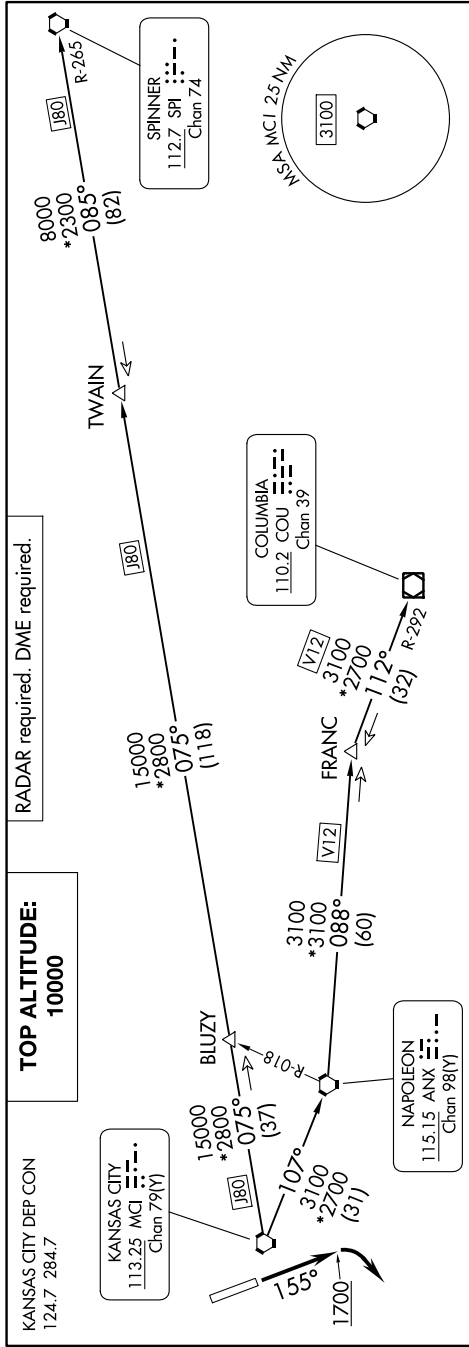


LAKES FIVE DEPARTURE

NC-2, 26 DEC 2024 to 23 JAN 2025



TOP ALTITUDE:
10000

RADAR required. DME required.

DEPARTURE ROUTE DESCRIPTION

TAKEOFF RUNWAY 16: Climb on heading 155° to 1700 before turning southwest, thence climb on assigned heading for RADAR vectors to appropriate route. Maintain 10000 or as assigned by ATC, expect filed altitude 10 minutes after departure.

TAKEOFF RUNWAY 34: Climb on assigned heading for RADAR vectors to appropriate route. Maintain 10000 or as assigned by ATC, expect filed altitude 10 minutes after departure.

COLUMBIA TRANSITION (LAKES5.COU): From over MCI VORTAC on MCI R-107 to ANX VORTAC, then on ANX R-088 and COU R-292 to COU VOR/DME.

FRANC TRANSITION (LAKES5.FRANC): From over MCI VORTAC on MCI R-107 to ANX VORTAC, then on ANX R-088 to FRANC.

SPINNER TRANSITION (LAKES5.SPI): From over MCI VORTAC on MCI R-075 and SPI R-265 to TWAIN, then on SPI R-265 to SPI VORTAC.

TWAIN TRANSITION (LAKES5.TWAIN): From over MCI VORTAC on MCI R-075 and SPI R-265 to TWAIN.

TAKEOFF MINIMUMS
Rwys 16, 34: Standard.

NOTE: Chart not to scale.

NC-2, 26 DEC 2024 to 23 JAN 2025

LAKES FIVE DEPARTURE