

|  |                        |                             |   |
|--|------------------------|-----------------------------|---|
| WAAS<br>CH <b>69220</b><br><b>W13A</b> | APP CRS<br><b>133°</b> | Rwy Idg<br>TDZE<br>Apt Elev | <b>2623</b><br><b>836</b><br><b>836</b> |
|--|------------------------|-----------------------------|---|

# RNAV (GPS) RWY 13

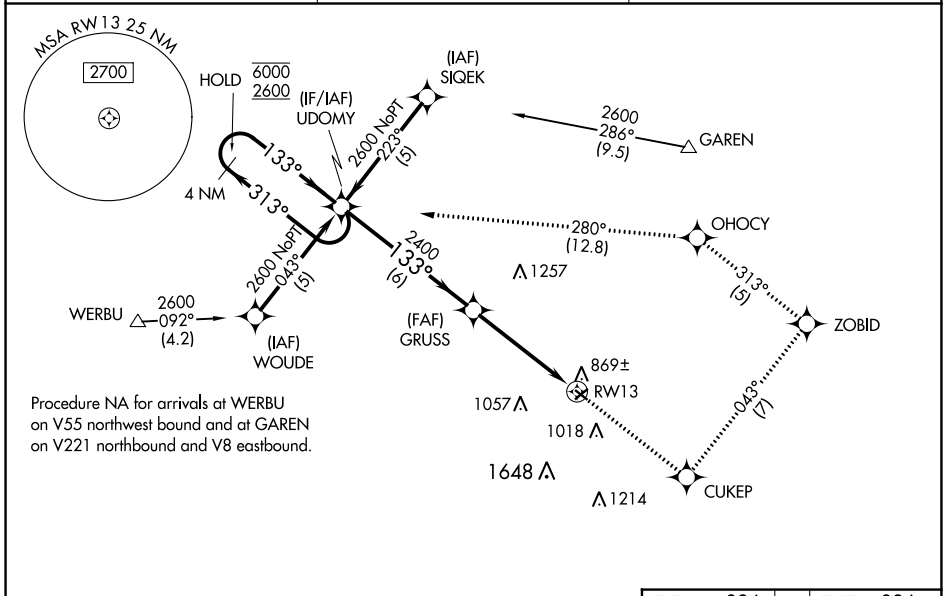
SMITH FLD (SMD)

RNP APCH.

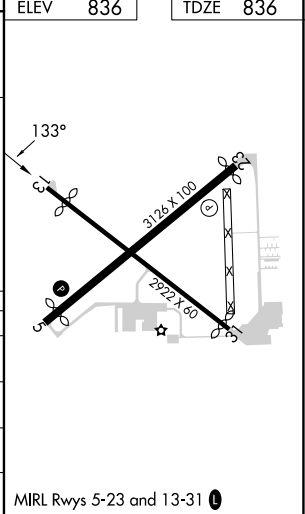
Procedure NA at night. Rwy 13 helicopter visibility reduction below 1 SM NA.  
 For uncompensated Baro-VNAV systems, LNAV/VNAV NA below -1.6°C or above 5.4°C. When local altimeter setting not received, use Fort Wayne Intl altimeter setting:  
 -22°C increase LPV DA to 1162 feet; LNAV/VNAV DA to 1435 feet; increase all MDA 40 feet and LNAV Cat C visibility ¼ SM. Baro-VNAV NA when using Fort Wayne Intl altimeter setting.

MISSED APPROACH: Climb to 2600 direct CUKEP and on track 043° to ZOBID and on track 313° to OHOCY and on track 280° to UDOMY and hold.

|                         |  |                               |
|-------------------------|--|-------------------------------|
| AWOS-3<br><b>124.55</b> | FORT WAYNE APP CON<br><b>127.2 284.6</b> | UNICOM<br><b>122.8 (CTAF)</b> |
|-------------------------|--|-------------------------------|



|                      |            |             |             |                         |       |
|----------------------|------------|-------------|-------------|-------------------------|-------|
|                      | 2600       | CUKEP       | ZOBID       | OHOCY                   | UDOMY |
|                      | ↑          | ✧           | ✧           | ✧                       | ✧     |
|                      |            | tr 043°     | tr 313°     | tr 280°                 |       |
| 4 NM Holding Pattern | UDOMY      |             |             |                         |       |
| 6000 ← 313°          | GRUSS 2400 |             |             |                         |       |
| 2600 → 133°          | RWY 13     |             |             |                         |       |
| GP 3.00° TCH 40      | 2400       |             |             |                         |       |
|                      | 6 NM       |             | 4.7 NM      |                         |       |
| CATEGORY             | A          | B           | C           | D                       |       |
| LPV DA               | 1135-1     |             | 299 (300-1) |                         | NA    |
| LNAV/VNAV DA         | 1408-2     |             | 572 (600-2) |                         | NA    |
| LNAV MDA             | 1340-1     | 504 (600-1) |             | 1340-1½<br>504 (600-1½) |       |
| CIRCLING             | 1400-1     | 564 (600-1) |             | 1940-3<br>1104 (1200-3) |       |



EC-2, 26 DEC 2024 to 23 JAN 2025

EC-2, 26 DEC 2024 to 23 JAN 2025