

HI-TACAN RWY 29R

TACAN CZQ Chan 76	APCH CRS 307°	Rwy Idg 29R 9227 29L 8008	TDZE 29R 333 29L 331	Arprt Elev 336
----------------------	------------------	---------------------------------	----------------------------	-------------------

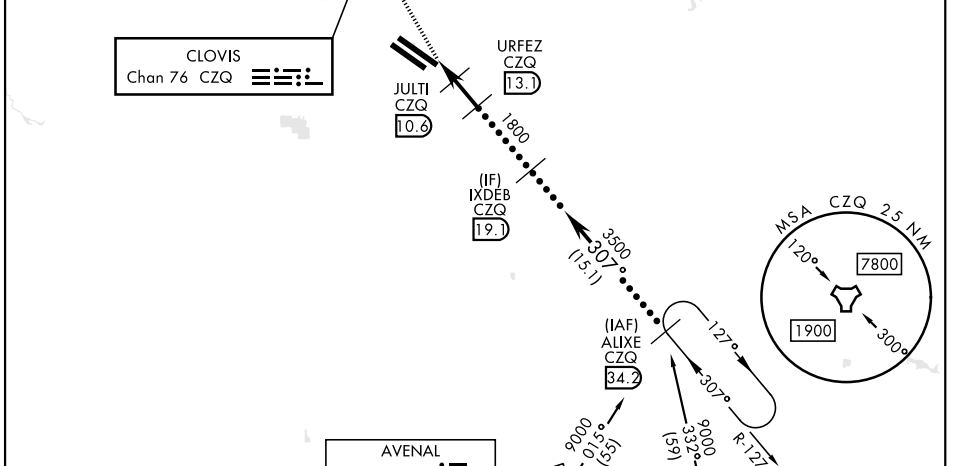
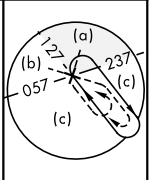
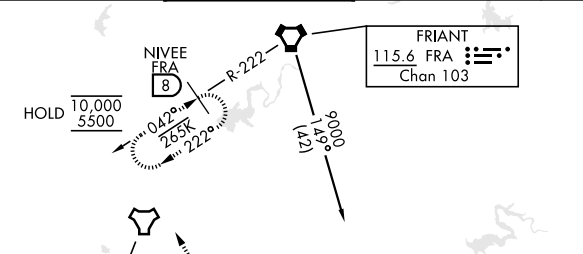
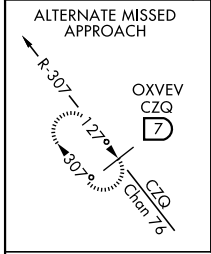
[USAF] FRESNO YOSEMITE INTL (KFAT)

DME required
 * When ALS inop, increase CAT CDE vis to 1 1/4 miles.



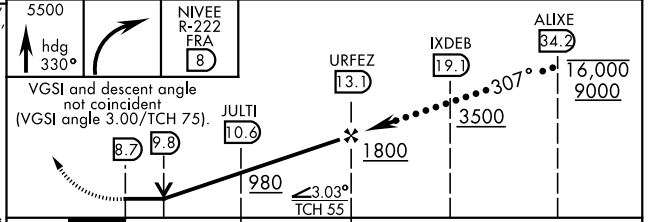
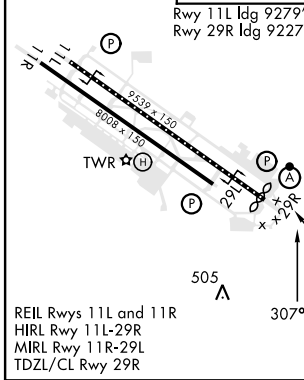
MISSED APPROACH: Climb to 5500 on heading 330° and FRA VORTAC R-222 to NIVEE/FRA 8 DME and hold, continue climb-in-hold to 5500.

ATIS 121.35 273.6	APP CON 132.35 323.25	TOWER 118.2 251.1	GND CON 121.7 348.6	CLNC DEL 124.35 348.6
----------------------	--------------------------	----------------------	------------------------	--------------------------



EMERG SAFE ALT 100 NM 16,700

ELEV 336	TDZE 29R 333	TDZE 29L 331
----------	--------------	--------------



CATEGORY	C	D	E
S-29R *	760/40	427	(500-3/4)
SIDESTEP 29L	760-1 1/2 429 (500-1 1/2)	760-2	429 (500-2)
CIRCLING	920-1 1/2 584 (600-1 1/2)	920-2 584 (600-2)	1140-2 3/4 804 (900-2 3/4)

HI-TACAN RWY 29R

SW-2, 26 DEC 2024 to 23 JAN 2025

SW-2, 26 DEC 2024 to 23 JAN 2025