

GOLDSBORO, NORTH CAROLINA

RNAV (GPS) RWY 8

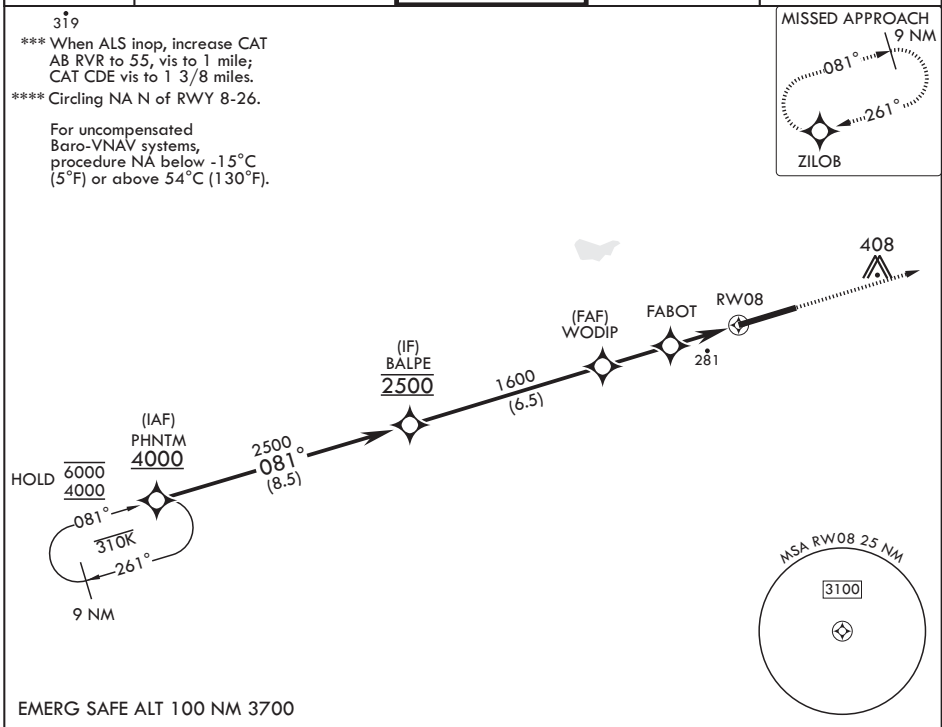
WAAS CH 63600 W08A	APCH CRS 081°	Rwy ldg TDZE 73 Arprt Elev 109
---------------------------------	-------------------------	--

(USAF)

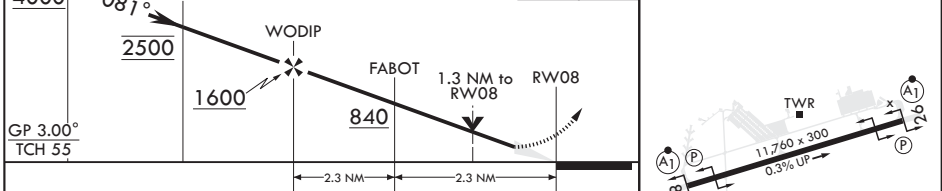
SEYMOUR JOHNSON AFB (KGSB)

RNP APCH-GPS	ALSIF-1	MISSED APPROACH: Climb to 2300 direct ZILOB and hold.
--------------	---------	---

ATIS★ 317.625	APP CON 119.7 273.6 (111° -257°) 123.7 290.9 (258° -110°)	TOWER★ 126.25 370.875	GND CON 132.45 275.8	CLNC DEL 128.025 270.8
-------------------------	---	---------------------------------	--------------------------------	----------------------------------



PHNTM 4000	BALPE 2500	WODIP 1600	FABOT 840	RWY 8 281	2300 ZILOB ELEV 109 TDZE 73
------------	------------	------------	-----------	-----------	-----------------------------



CATEGORY	A	B	C	D	E
LPV DA*	273/24		200	(200-½)	
LNAV/VNAV DA**	540/50		467	(500-1)	
LNAV MDA***	540/24	467 (500-½)	540/50	467	(500-1)
CIRCLING****	580-1	600-1	680-1½	740-2	740-2¼
	471 (500-1)	491 (500-1)	571 (600-½)	631 (700-2)	631 (700-2¼)

HIRL all Rwy's

GOLDSBORO, NORTH CAROLINA

35°20'N - 77°58'W

SEYMOUR JOHNSON AFB (KGSB)

Amdt 7 11JUL24

RNAV (GPS) RWY 8

SE-2, 26 DEC 2024 to 23 JAN 2025

SE-2, 26 DEC 2024 to 23 JAN 2025