

GOLDSBORO, NORTH CAROLINA

# TACAN Y RWY 26

TACAN Chan <b>112</b>	GSB <b>261°</b>	APCH CRS	Rwy ldg <b>11,760</b>
			TDZE <b>109</b>
			Arprt Elev <b>109</b>

[USAF]

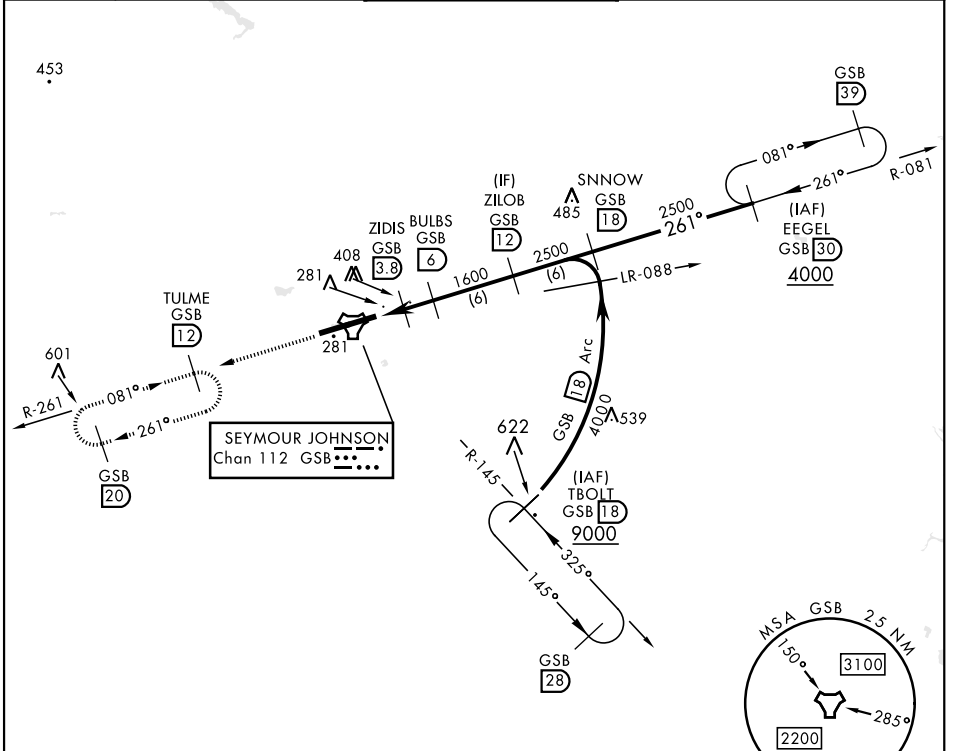
SEYMOUR JOHNSON AFB (KGSB)

▼ \* When ALS inop, increase CAT AB RVR to 55, vis to 1 mile, CAT CDE vis to 1½ miles.  
 \*\* Circling N of Rwy 8-26 not authorized.



MISSED APPROACH: Climb to 2200 via GSB R-261 to TULME and hold.

ATIS ★ <b>317.625</b>	APP CON <b>123.7 290.9</b> (258°-110°) <b>119.7 273.6</b> (111°-257°)	TOWER ★ <b>126.25 370.875</b>	GND CON <b>132.45 275.8</b>	CLNC DEL <b>128.025 270.8</b>
-----------------------	--	-------------------------------	-----------------------------	-------------------------------

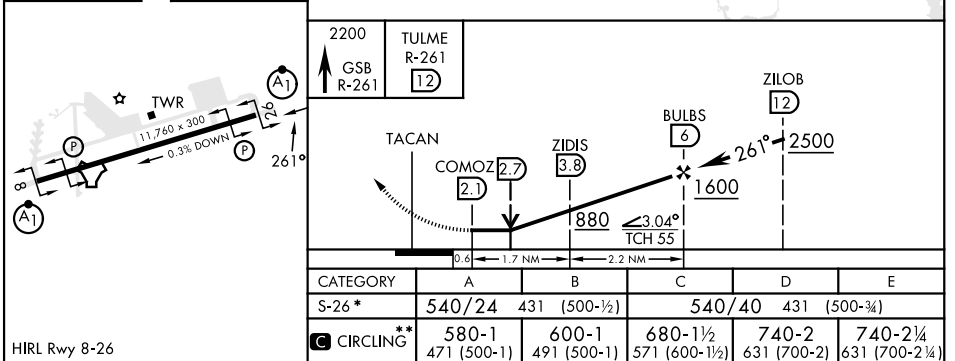


SE-2, 26 DEC 2024 to 23 JAN 2025

SE-2, 26 DEC 2024 to 23 JAN 2025

EMERG SAFE ALT 100 NM 3700

ELEV 109	TDZE 109
----------	----------



GOLDSBORO, NORTH CAROLINA  
 Amdt 8 03NOV22

35° 20'N-77° 58'W

SEYMOUR JOHNSON AFB (KGSB)

# TACAN Y RWY 26