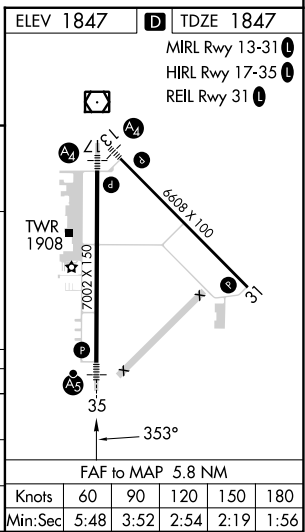
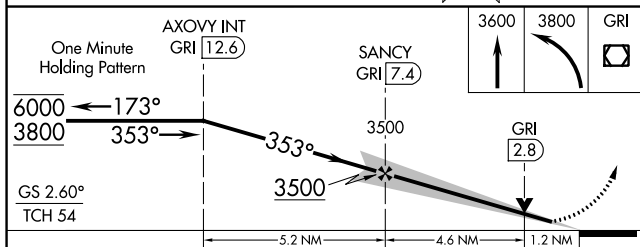
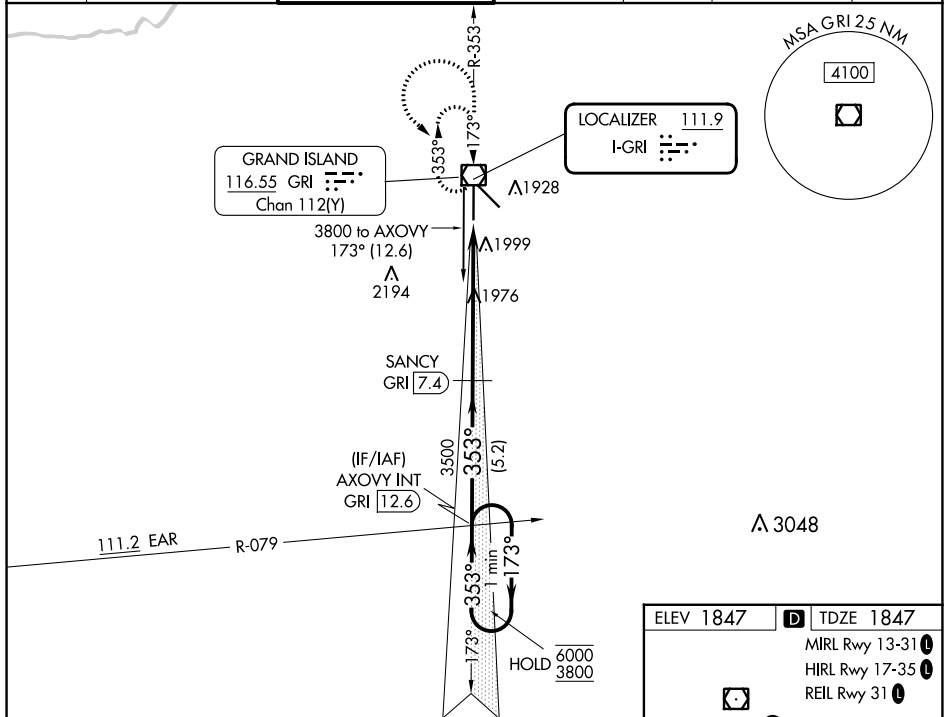


LOC I-GRI <b>111.9</b>	APP CRS <b>353°</b>	Rwy Idg TDZE Apt Elev	<b>7002</b> <b>1847</b> <b>1847</b>
---------------------------	------------------------	-----------------------------	---

# ILS or LOC RWY 35

CENTRAL NEBRASKA RGNL (GRI)

DME required for LOC only.				MALSR 	MISSED APPROACH: Climb to 3600 then climbing left turn to 3800 direct GRI VOR/DME and hold, continue climb-in-hold to 3800.					
For inop ALS, increase S-LOC 35 Cat C/D visibility to RVR 6000. DME from GRI VOR/DME, DME use requires simultaneous reception of I-GRI and GRI DME. *RVR 1800 authorized with use of FD or AP or HUD to DA. (NA when using Aurora altimeter setting).					ATIS <b>127.4</b>	MINNEAPOLIS CENTER <b>119.4 278.8</b>	GRAND ISLAND TOWER * <b>118.2 (CTAF) 259.3</b>	GND CON <b>121.9 259.3</b>	CLNC DEL <b>121.9</b>	CLNC DEL <b>126.05</b> (when twr closed)



CATEGORY	A	B	C	D
S-ILS 35*	2047/24 200 (200-½)			
S-LOC 35	2240/24	393 (400-½)	2240/35	393 (400-¾)
CIRCLING	2300-1	453 (500-1)	2400-1½	2560-2¼
			553 (600-1½)	713 (800-2¼)

NC-2, 26 DEC 2024 to 23 JAN 2025

NC-2, 26 DEC 2024 to 23 JAN 2025