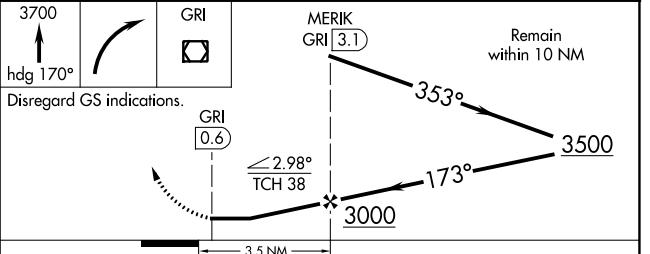
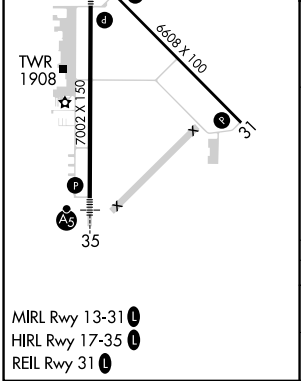
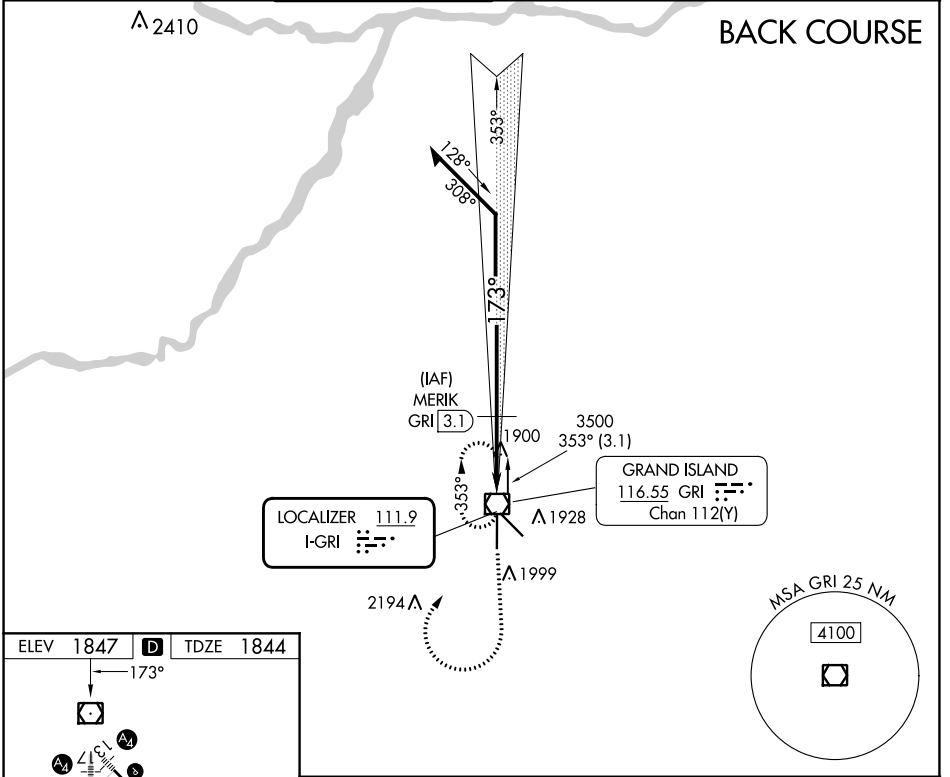


| | | | |
|---------------------------|------------------------|-------------------------|---------------------|
| LOC I-GRI 111.9 | APP CRS 173° | Rwy Idg 7002 | TDZE 1844 |
| | | Apt Elev 1847 | |

LOC/DME BC RWY 17

CENTRAL NEBRASKA RGNL (GRI)

| | | | | | | |
|---|--|---|-------------------------------|--|--|-------------------------|
| <p>Simultaneous reception of I-GRI and GRI DME required. When local altimeter setting not received, use Aurora altimeter setting and increase all MDA 60 feet, and S-17 Cat D visibility ¼ SM and Circling Cat C/D visibility ¼ SM.</p> | | | <p>MALS 42</p> | <p>MISSED APPROACH: Climb to 3700 on heading 170° then right turn direct GRI VOR/DME and hold.</p> | | |
| ATIS 127.4 | MINNEAPOLIS CENTER 119.4 278.8 | GRAND ISLAND TOWER * 118.2 (CTAF) 259.3 | GND CON 121.9 259.3 | CLNC DEL 121.9 | CLNC DEL 126.05 (when twr closed) | UNICOM 122.95 |



| CATEGORY | A | B | C | D |
|----------|--------------------|-------------|-------------------------|-------------------------|
| S-17 | 2160-¾ 316 (400-¾) | | | 2160-1 316 (400-1) |
| CIRCLING | 2300-1 | 453 (500-1) | 2400-1½ 553 (600-1½) | 2560-2¼ 713 (800-2¼) |

NC-2, 26 DEC 2024 to 23 JAN 2025

NC-2, 26 DEC 2024 to 23 JAN 2025