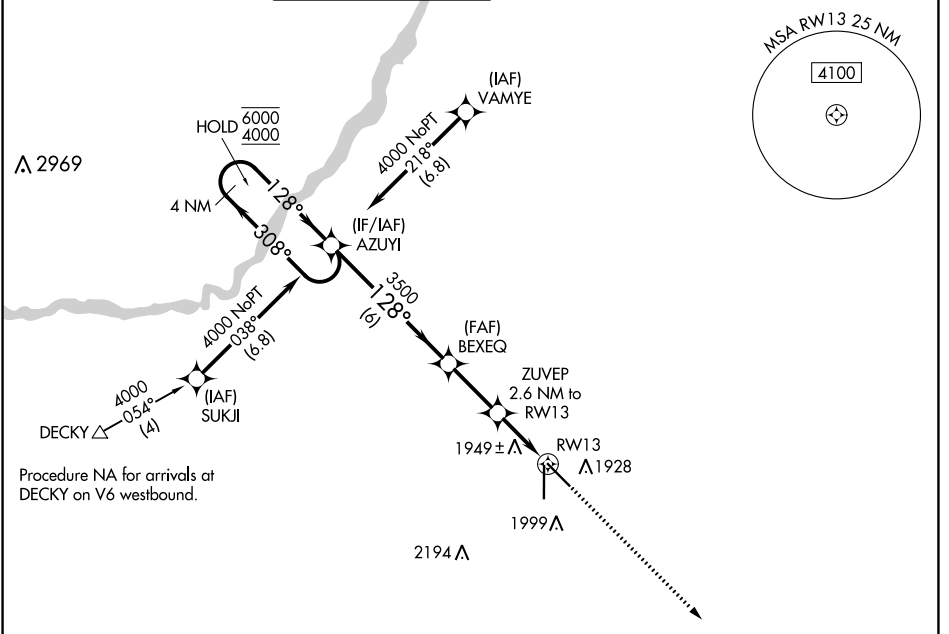


APP CRS	Rwy Idg	6608
128°	TDZE	1842
	Apt Elev	1847

RNAV (GPS) RWY 13

CENTRAL NEBRASKA RGNL (GRI)

RNP APCH - GPS.				MALS	MISSED APPROACH: Climb to 4100 direct AGEKY and hold.		
ATIS	MINNEAPOLIS CENTER	GRAND ISLAND TOWER *	GND CON	CLNC DEL	CLNC DEL	UNICOM	
127.4	119.4 278.8	118.2 (CTAF) 0 259.3	121.9 259.3	121.9	126.05 (when twr closed)	122.95	



Procedure NA for arrivals at DECKY on V6 westbound.

NC-2, 26 DEC 2024 to 23 JAN 2025

NC-2, 26 DEC 2024 to 23 JAN 2025

