


WAAS CH 90315 W23B	APP CRS 234°	Rwy Idg TDZE 864 Apt Elev 926	9000
----------------------------------------	------------------------	---------------------------------------------------	-------------

RNAV (GPS) RWY 23R

PIEDMONT TRIAD INTL (GSO)

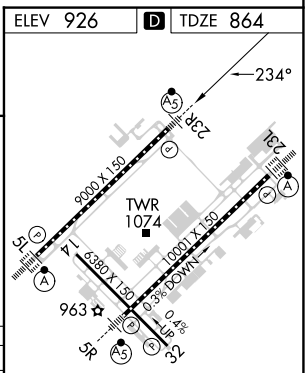
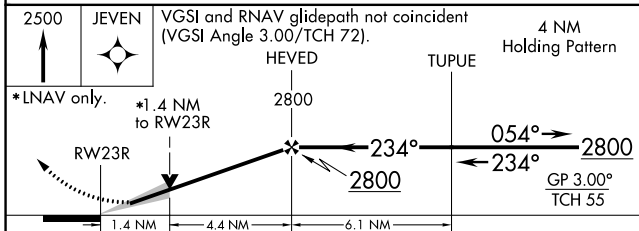
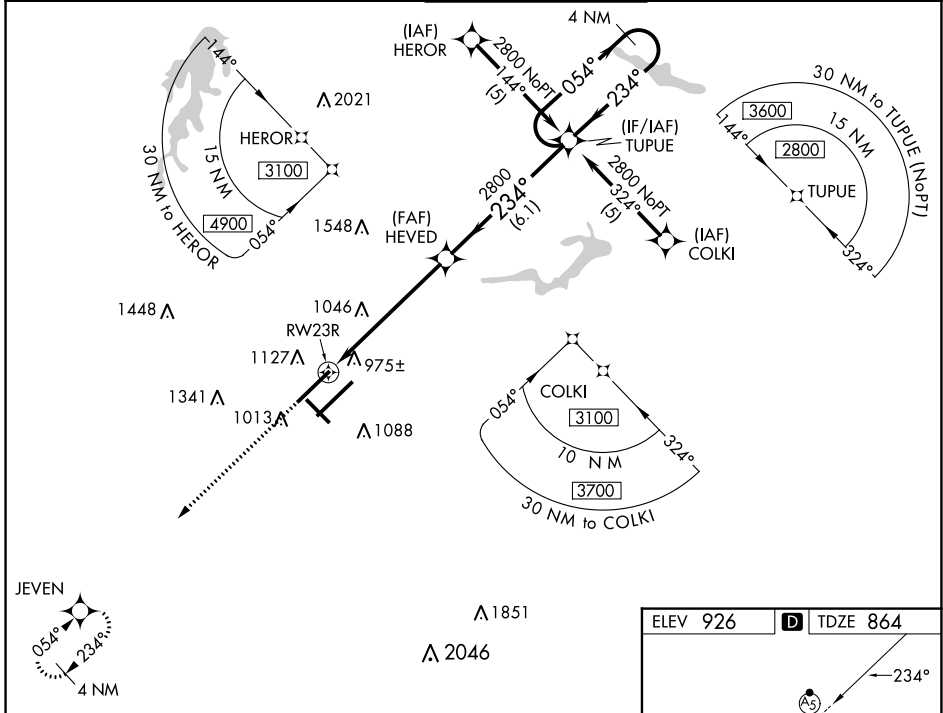
▼ For uncompensated Baro-VNAV systems, LNAV/VNAV NA below -16°C (4°F) or above 47°C (116°F). DME/DME RNP-0.3 NA. Simultaneous approach authorized with ILS or LOC RWY 23L, ILS RWY 23L CAT (II). LNAV procedure NA during simultaneous operations. Use of FD or AP providing RNAV track guidance required during simultaneous operations.

MALSR



MISSED APPROACH: Climb to 2500 direct JEVEN and hold.

D-ATIS 128.55	GREENSBORO APP CON 124.35 269.225 126.6 327.075 (050°-249°)	GREENSBORO TOWER 119.1 290.325	GND CON 121.9 348.6	CLNC DEL 121.75
-------------------------	---------------------------------------------------------------------------------	------------------------------------------	-------------------------------	---------------------------



2500	JEVEN	VGSI and RNAV glidepath not coincident (VGSI Angle 3.00/TCH 72).		4 NM Holding Pattern
*LNAV only.	*1.4 NM to RWY 23R	2800	2800	2800
		1.4 NM	4.4 NM	6.1 NM
CATEGORY	A	B	C	D
LPV DA		1064/18	200 (200-½)	
LNAV/VNAV DA		1414-1½	550 (500-1½)	
LNAV MDA	1340/24	476 (500-½)	1340/50	476 (500-1)
C CIRCLING	1440-1	514 (600-1)	1700-2¼ 774 (800-2¼)	1700-2½ 774 (800-2½)

ELEV 926	D TDZE 864
TDZ/CL Rwy 5L, 23R and 23L REIL Rwy 32 HIRL Rwy 14-32, 5R-23L and 5L-23R	

SE-2, 26 DEC 2024 to 23 JAN 2025

SE-2, 26 DEC 2024 to 23 JAN 2025