

HI-TACAN RWY 25

TACAN TOL Chan 72	APCH CRS 260°	Rwy ldg 10,599 TDZE 678 Arpt Elev 684
----------------------	------------------	---

[USAF]

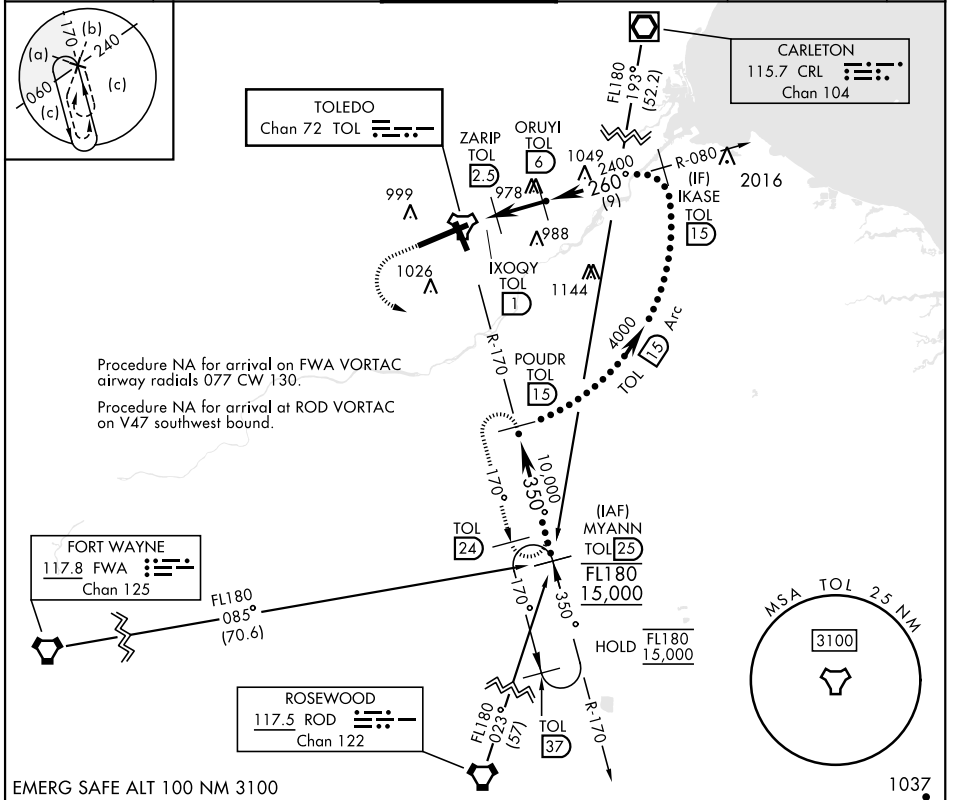
EUGENE F KRANZ TOLEDO EXPRESS (KTOL)

▼ * When ALS inop, increase RVR to 60, vis to 1½ mile.

▲ MISSED APPROACH: Climb to 3000 then left turn on TOL R-170 to POWDR/15 DME and hold.

MALSR **A5**

ATIS 118.75 290.225	TOLEDO APP CON 126.1 317.55	TOLEDO TOWER 118.1 285.4	GND CON 121.9 348.6	CLNC DEL 121.75 348.6	ASR
-------------------------------	---------------------------------------	------------------------------------	-------------------------------	---------------------------------	-----



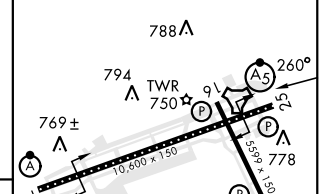
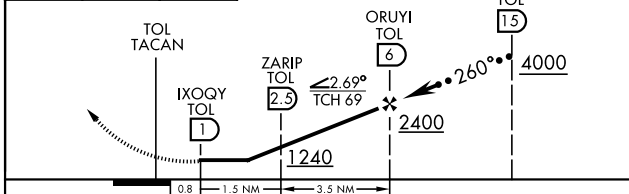
3000 ↑ TOL R-170

POWDR TOL 15

VGSI and ILS glidepath not coincident (VGSI Angle 3.00/TCH 69).

ELEV 684 TDZE 678

Rwy 7 ldg 10,599'
Rwy 25 ldg 10,599'



CATEGORY	C	D	E	HIRL Rwy 7-25 MIRL Rwy 16-34 REIL Rwy 16, 34 TDZL/CL Rwy 7
S-25 *	1080/40 402 (500-¾)	1080/40	402 (500-¾)	726 ± A
CIRCLING	1360-2 676 (700-2)	1400-2¼ 716 (800-2¼)	1400-2½ 716 (800-2½)	775 ± A

HI-TACAN RWY 25

EC-2, 26 DEC 2025

EC-2, 26 DEC 2025