

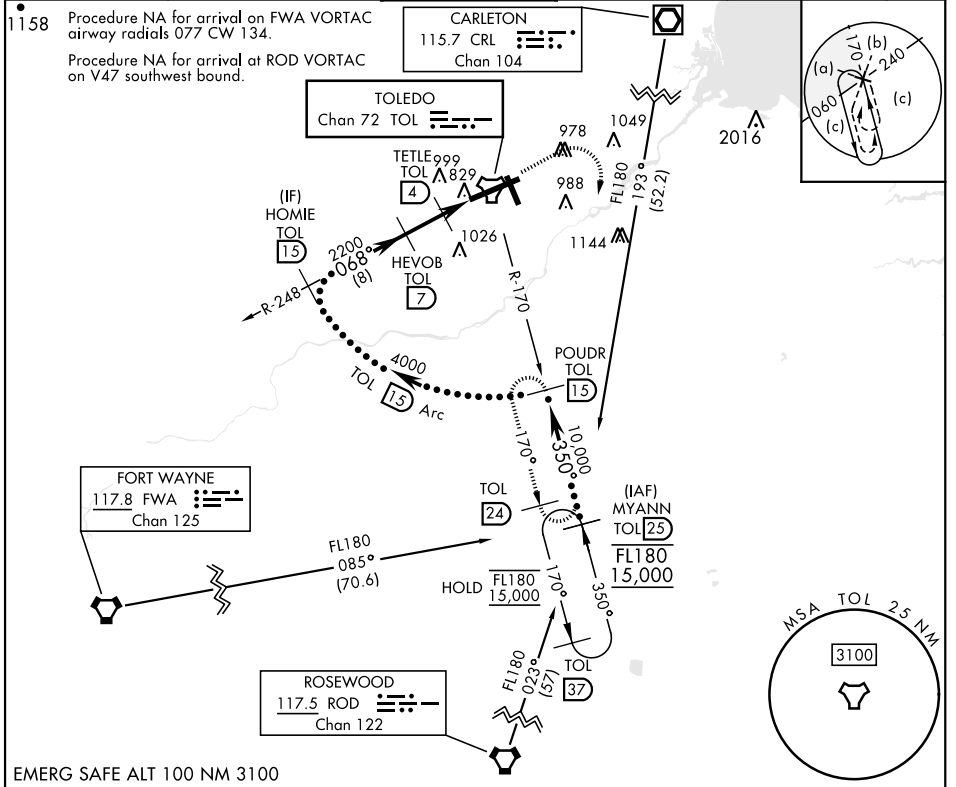
HI-TACAN RWY 7

TACAN TOL Chan 72	APCH CRS 068°	Rwy ldg 10,599 TDZE 683 Arprt Elev 684
-----------------------------	-------------------------	---

[USAF]

EUGENE F KRANZ TOLEDO EXPRESS (KTOL)

<p>V * When ALS inop, increase CAT E vis to 1½ mile.</p>		<p>ALS-F-2</p>	<p>MISSED APPROACH: Climb to 3000 then right turn on TOL TACAN R-170 to POWDR/15 DME and hold.</p>		
<p>ATIS 118.75 290.225</p>	<p>TOLEDO APP CON 126.1 317.55</p>	<p>TOLEDO TOWER 118.1 285.4</p>	<p>GND CON 121.9 348.6</p>	<p>CLNC DEL 121.75 348.6</p>	<p>ASR</p>



EMERG SAFE ALT 100 NM 3100

	<p>3000</p> <p>TOL R-170</p>	<p>POWDR TOL 15</p>	<p>ELEV 684</p> <p>TDZE 683</p>										
<p>HOMIE TOL 15</p> <p>4000</p> <p>068°</p> <p>2200</p> <p>HEVOB TOL 7</p> <p>2.55°</p> <p>TCH 55</p> <p>1240</p> <p>TETLE TOL 4</p> <p>TOL 2.9</p> <p>TOL 1.3</p> <p>TOL TACAN</p>	<p>794</p> <p>TWR 750 91</p> <p>769 ±</p> <p>10,600 x 150</p> <p>599.150</p> <p>599.778</p> <p>34</p> <p>726 ±</p> <p>775 ±</p>												
<table border="1"> <tr> <th>CATEGORY</th> <th>C</th> <th>D</th> <th>E</th> </tr> <tr> <td>S-7 *</td> <td>1140/45</td> <td>457</td> <td>(500-7%)</td> </tr> <tr> <td>CIRCLING</td> <td>1360-2 676 (700-2)</td> <td>1400-2¼ 716 (800-2¼)</td> <td>1400-2½ 716 (800-2½)</td> </tr> </table>	CATEGORY	C	D	E	S-7 *	1140/45	457	(500-7%)	CIRCLING	1360-2 676 (700-2)	1400-2¼ 716 (800-2¼)	1400-2½ 716 (800-2½)	<p>HIRL Rwy 7-25</p> <p>MIRL Rwy 16-34</p> <p>REIL Rwy 16, 34</p> <p>TDZL/CL Rwy 7</p> <p>Rwy 7 ldg 10,599'</p> <p>Rwy 25 ldg 10,599'</p>
CATEGORY	C	D	E										
S-7 *	1140/45	457	(500-7%)										
CIRCLING	1360-2 676 (700-2)	1400-2¼ 716 (800-2¼)	1400-2½ 716 (800-2½)										

HI-TACAN RWY 7

EC-2, 26 DEC 2024 to 23 JAN 2025

EC-2, 26 DEC 2024 to 23 JAN 2025