

HI-TACAN RWY 35L

TACAN EFD Chan 31	APCH CRS 002°	Rwy Idg THRE Arprt Elev 9001 28 33	AL-197 [USAF]	ELLINGTON (KEFD)
-----------------------------	-------------------------	--	---------------	------------------

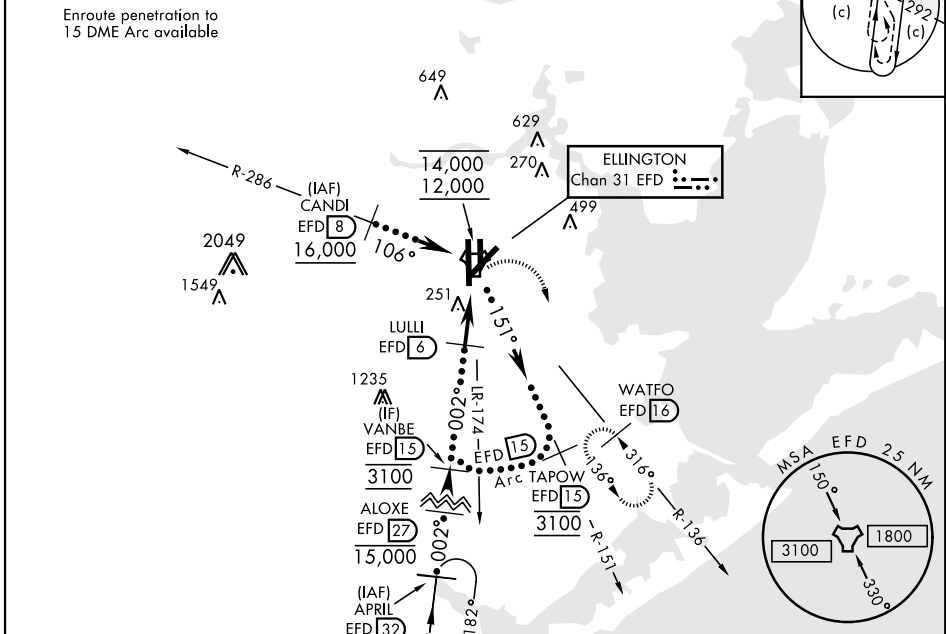
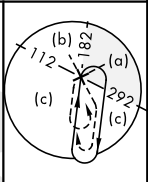
RADAR required for procedure entry

MALSF **A4**

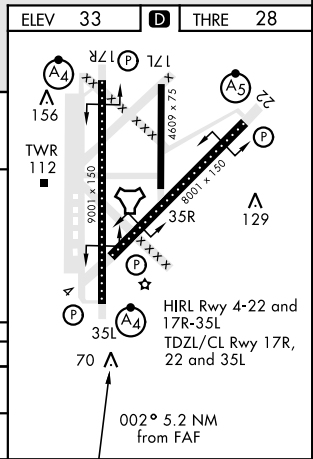
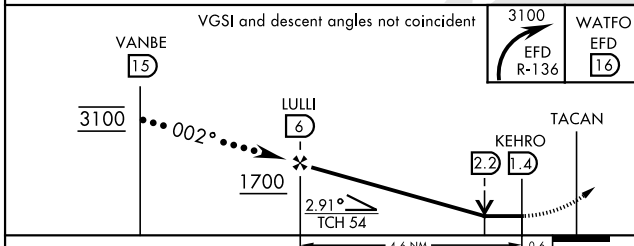
MISSED APPROACH: Climbing right turn to 3100 on EFD TACAN R-136 to WATFO/ EFD 16 DME and hold.

ATIS 135.575 269.9	HOUSTON APP CON 134.45 284.0	TOWER 126.05 253.5	GND CON 121.6 275.8
------------------------------	--	------------------------------	-------------------------------

EFD TACAN	N29°36.36' W95°09.58'
CANDI	N29°39.24' W95°18.17'
APRIL	N29°04.53' W95°14.05'
WATFO	N29°23.90' W94°58.07'



EMERG SAFE ALT 100 NM 16,000



CATEGORY	C	D	E
S-35L *	520/60	492	(500-1¼)
CIRCLING**	580-1½ 547 (600-1½)	640-2 607 (700-2)	700-2¼ 667 (700-2¼)

HOUSTON, TEXAS 29°36'N-95°10'W ELLINGTON (KEFD)

HI-TACAN RWY 35L

SC-5, 26 DEC 2024 to 23 JAN 2025

SC-5, 26 DEC 2024 to 23 JAN 2025