

KARR SEVEN DEPARTURE (RNAV)

NOTE: Chart not to scale.

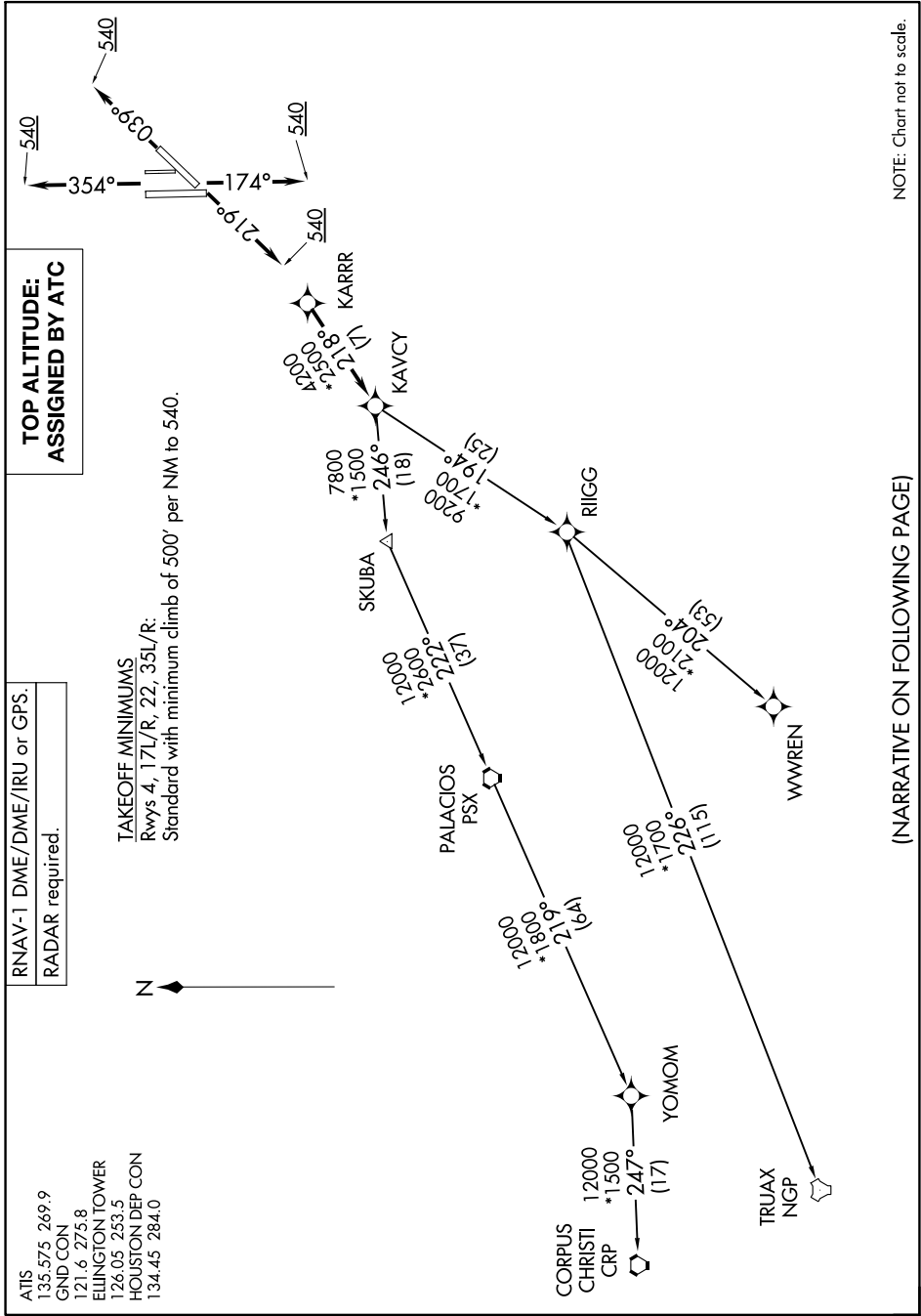
SC-5, 26 DEC 2024 to 23 JAN 2025

| |
|----------------------------|
| RNAV-1 DME/DME/IRU or GPS. |
| RADAR required. |

| |
|--|
| TOP ALTITUDE: ASSIGNED BY ATC |
|--|

TAKEOFF MINIMUMS
Rwys 4, 17L/R, 22, 35L/R:
Standard with minimum climb of 500' per NM to 540.

ATIS 135.575 269.9
GND CON 121.6 275.8
ELLINGTON TOWER 126.05 253.5
HOUSTON DEP CON 134.45 284.0



(NARRATIVE ON FOLLOWING PAGE)

SC-5, 26 DEC 2024 to 23 JAN 2025