

# ALEXANDRIA THREE DEPARTURE

**TOP ALTITUDE:  
16000**

- D-ATIS 124.6
- CLNC DEL 125.45
- CPDLC 121.9
- GND CON 118.7
- HOBBY TOWER 256.9
- HOUSTON DEP CON 132.25
- 285.425

LUFKIN  
112.1 LFK  
Chan 58

ALEXANDRIA  
116.1 AEX  
Chan 108

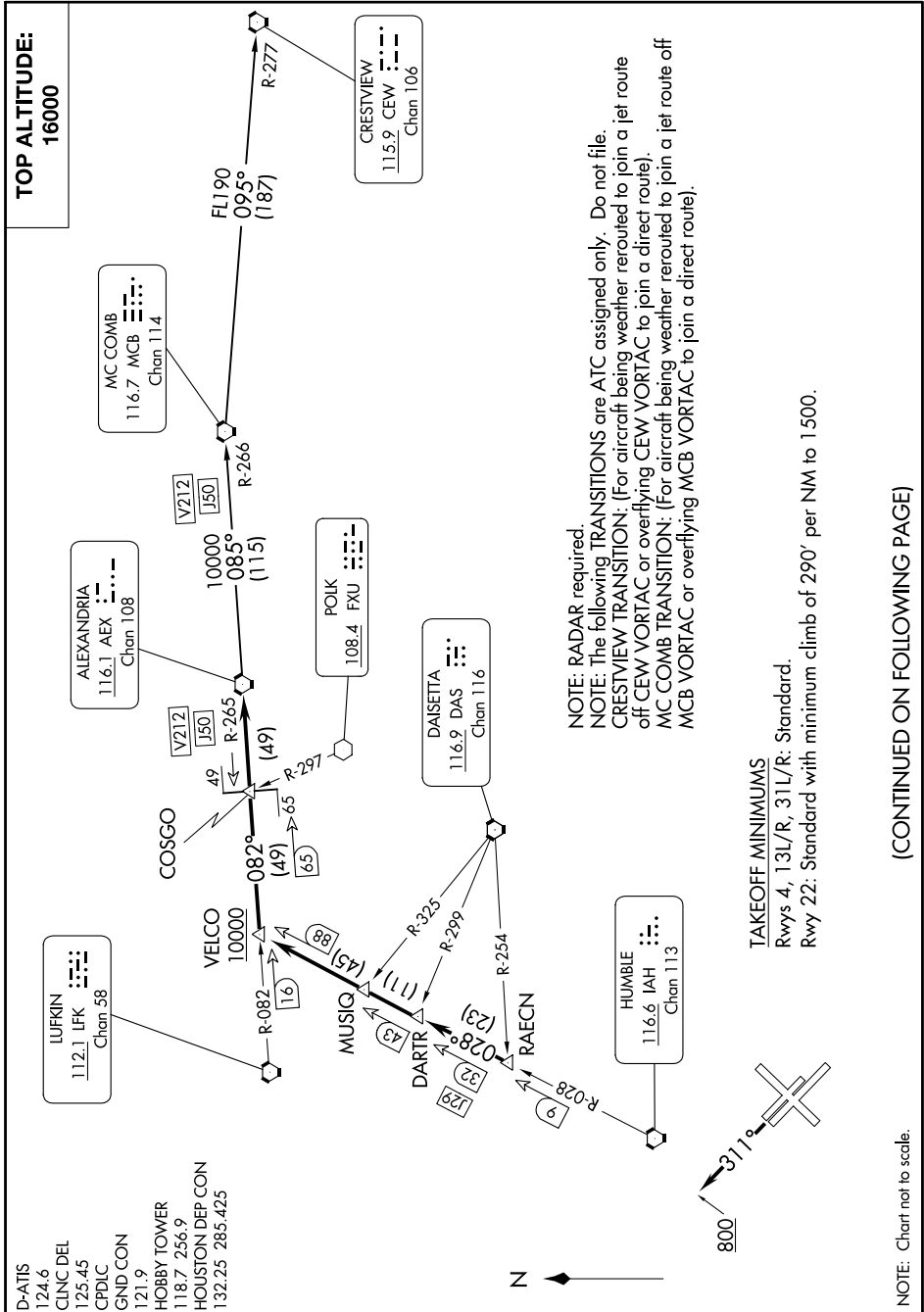
MC COMB  
116.7 MCB  
Chan 114

CRESTVIEW  
115.9 CEW  
Chan 106

HUMBLE  
116.6 IAH  
Chan 113

DAISETTA  
116.9 DAS  
Chan 116

POIK  
108.4 FXU



NOTE: RADAR required.  
 NOTE: The following TRANSITIONS are ATC assigned only. Do not file.  
 CRESTVIEW TRANSITION: (For aircraft being weather rerouted to join a jet route of CEW VORTAC or overflying CEW VORTAC to join a direct route).  
 MC COMB TRANSITION: (For aircraft being weather rerouted to join a jet route off MCB VORTAC or overflying MCB VORTAC to join a direct route).

**TAKEOFF MINIMUMS**  
 Rwys 4, 13L/R, 31L/R: Standard.  
 Rwy 22: Standard with minimum climb of 290' per NM to 1500.

(CONTINUED ON FOLLOWING PAGE)

NOTE: Chart not to scale.

# ALEXANDRIA THREE DEPARTURE